

<Public>



February 27, 2026

Epsita Priye
Chair, WECC Studies Subcommittee (StS)
epsita.priye@pse.com

Doug Tucker
Western Electricity Coordinating Council
155 North 400 West, Suite 200
Salt Lake City, UT 84103-1114
dtucker@wecc.org
(801) 819-7606

Linnea Gentry
Idaho Power Company
Senior Engineer
LGentry@idahopower.com
(208) 388-2043

Subject: Idaho Power's 2025 WECC Annual Supplemental Progress Report

Epsita and Doug:

Attached is Idaho Power's 2026 WECC Annual Supplemental Progress Report. Please contact me if you have any questions.

Sincerely,

Linnea Gentry

Linnea Gentry
Senior Engineer

Enclosure

cc: Jared Ellsworth (IPCO)
Erik Schellenberg (IPCO)
Curtis Westhoff (IPCO)

Waiver of “Significant Impact” Status

Idaho Power is requesting a waiver of the “Significant Impact” status for the following projects:

- Boise Bench Generation Project
- Oxbow Switch Yard T233 230/138kV Transformer Replacement
- Horseflat T232 230/138kV Transformer Project
- Pronghorn 230/138/161kV Substation Project
- Crimson Orchard Generation Project
- Blacks Creek Generation Project and Blacks Creek Substation

Boise Bench Generation Project

The Boise Bench BESS Generation Project (BOBS) at the existing Boise Bench 138 kV substation located near Boise, ID is a 200 MW inverter-based battery generation resource. The new generation is in proximity to Idaho Power’s main load center and will serve Idaho Power native load. The project was studied during the generation interconnection process and has no significant impact on the WECC interconnected electric system. The planned in-service date Summer 2026.

Oxbow Switch Yard T233 Transformer Replacement Project

The existing transformer at Oxbow switchyard is a 230kV/138kV transformer that has a 100 MVA rating. This transformer will be upgraded with a larger 200 MVA 230kV/138kV transformer to better serve growing load and system transfers through the underlying 138k and 69kV system. This project is intended to improve system performance to the West Central Mountains local area of the system and has no significant impact to the WECC Interconnected electric system. The planned in-service date Spring 2026.

Horseflat T232 Transformer Project

Horseflat substation will install the previous Oxbow 230/138kV transformer as a new T232 that has a 100 MVA rating. This transformer will be installed in parallel with the existing T231 230/138kV transformer allowing for more load service and system transfers through the underlying 138kV and 69kV system. This project is intended to improve system performance to the West Central Mountains local area and has no significant impact to the WECC Interconnected electric system. The planned in-service date Spring 2027.

Pronghorn 230/138/161 Substation Project

Pronghorn substation will be a new 230/161/138kV switching station to better serve load from the existing 230kV and 161 kV and 138kV system located in Butte County, ID. The new switching station will be designed as a breaker and a half substation at 138kV with two 138kV load service lines of less than half a mile to the existing Scoville 138kV substation, two 18 MVAR shunt caps, a 161/138kV transformer terminated via a short line to the nearby 161kV bus of the Anelope substation, and a 230/138kV transformer with a 0.15 mile line to the existing

Idaho Power 2025 WECC Annual Supplemental Progress Report

nearby 230kV bus of the Antelope substation. This switching station will better allow the growing load in the area to be served with no significant impact on the WECC interconnected electric system. The planned in-service date Fall 2026.

Crimson Orchard Generation Project

The Crimson Orchard Solar and BESS Generation Project (CRIM) at the existing Danskin 230 kV substation located near Elmore, ID is a 100 MW inverter-based battery generation resource and a 100 MW inverter-based solar generation resource for a combined point of injection of 100 MW max output. The new generation is in proximity to Idaho Power's main load center and will serve Idaho Power native load. The project was studied during the generation interconnection process and has no significant impact on the WECC interconnected electric system. The planned in-service date Spring 2027.

Blacks Creek Generation Project and Blacks Creek Substation

The new Blacks Creek substation (BKSR) is being built south of Boise, ID to interconnect the Blacks Creek Generation Project. The BKSR substation will be fed by splitting the existing 13 mile Chip-Hubbard 230 kV transmission line and building approximately 1 mile of new 230 kV transmission to the new BKSR substation. The resulting lines will become the 8 mile BSCR-HBRD and 5 mile BSCR-CHIP 230 kV lines. The Blacks Creek Generation project is a 400 MW inverter-based solar generation resource. The new generation is in proximity to Idaho Power's main load center and will serve Idaho Power native load. The project was studied during the generation interconnection process and has no significant impact on the WECC interconnected electric system. The planned in-service date of end of 2027.

Annual Progress Report Update

Boardman to Hemingway Transmission Project

The Boardman to Hemingway Transmission Line Project (B2H) is a planned 500-kilovolt (kV) transmission project that would span between the Hemingway 500-kV substation near Melba, Idaho, and the Longhorn Substation near Boardman, Oregon. Once operational, B2H will provide Idaho Power increased access to reliable, lower-cost market energy purchases from the Pacific Northwest. The project also creates capacity to fulfill transmission service requests on the Idaho Power system. Idaho Power's planned capacity interest in B2H is 750 MW in the west to east direction and 182 MW in the east to west direction.

B2H (including early versions of the project) has been a cost-effective resource identified in each of Idaho Power's integrated resource plans (IRP) since 2006 and continues to be a cornerstone of Idaho Power's 2023 IRP preferred resource portfolio. In the 2023 IRP, as has been the case in prior IRPs, the B2H project is not simply evaluated as a transmission line, but rather as a resource that will be used to serve Idaho Power load. As a resource, the B2H project is demonstrated to be the most cost-effective method of serving projected customer demand.

Idaho Power 2025 WECC Annual Supplemental Progress Report

As can be seen in the 2023 IRP, the lowest-cost resource portfolio includes B2H. When compared to other individual resource options, B2H is also the least-cost option in terms of both capacity cost and energy cost. As a resource alone, B2H is the lowest-cost alternative to serve Idaho Power's customers in Oregon and Idaho. As a transmission line, B2H also offers incremental ancillary benefits and additional operational flexibility.

Idaho Power is the project manager for the B2H project. The B2H project achieved a major milestone nearly 10 years in the making with the release of the Bureau of Land Management (BLM) Record of Decision (ROD) on November 17, 2017. The BLM ROD provides the ability to site the B2H project on BLM-administered land. Idaho Power also received a ROD from the U.S. Forest Service (USFS) in 2018 and a ROD from the U.S. Navy in 2019. Idaho Power also obtained Certificates of Public Convenience and Necessity from the IPUC and OPUC in June 2023.

For the State of Oregon permitting process, Idaho Power submitted the amended application for Site Certificate to the Oregon Department of Energy (ODOE) in summer 2017 and the Oregon Department of Energy issued a Draft Proposed Order on May 22, 2019. Oregon's Energy Facility Siting Council (EFSC) is tasked with establishing siting standards for energy facilities in Oregon and ensuring certain transmission line projects, including B2H, meet those standards. The EFSC completed the contested case proceeding in 2022. In late September 2022, the Oregon EFSC held its final hearing and its final vote on Idaho Power's application for a site certificate for B2H. The EFSC approved the site certificate by a unanimous vote. Three limited parties filed appeals to the Oregon Supreme Court asking them to overturn EFSC's approval of the B2H site certificate. The Oregon Supreme Court issued its decision on March 9, 2023, affirming the B2H site certificate. Idaho Power pursued two amendments to the site certificate to accommodate route changes, many of which are for the benefit of landowners along the route, and to enhance constructability. In September 2023, EFSC approved Idaho Power's first amendment request. One party contested the EFSC's approval of the first amendment in Union County Circuit Court. On October 28, 2024, the Union County Circuit Court issued an order to dismiss the proceeding. Separately, in August 2024, EFSC approved Idaho Power's second amendment request. The approval of the second amendment was contested. On March 27, 2025, the Oregon Supreme Court upheld the EFSC approval of the second amendment to the site certificate.

Although Idaho Power has non-appealable right-of-way grants from the BLM and the site certificate from ODOE, both entities require additional steps prior to authorizing construction. Idaho Power has worked through the BLM's process to secure authorization for construction and with the ODOE to obtain Pre-Construction Compliance Determinations. Idaho Power has received these authorizations for nearly all locations with few exceptions. Material procurement is in progress and materials are arriving in Oregon. Construction began in June 2025 and the project is on track for in-service of the transmission line no earlier than 2027.

In addition to the transactions directly related to construction and operation of B2H, Idaho Power and PacifiCorp have agreed to exchange certain assets and take other actions as follows upon completion of B2H, conditioned on reaching definitive agreements. This includes two system upgrade projects identified to reinforce Borah West and Midpoint West.

- Midpoint-Kinport 345 kV Series Capacitor Addition
- Midpoint 500/345 kV Second Transformer Addition

Idaho Power 2025 WECC Annual Supplemental Progress Report

WECC Path 14 (Idaho-Northwest) transfer capacity ratings with the B2H Project facilities are expected to increase to 2250 MW west to east and 3400 MW east to west.

Planned B2H facilities include:

- Hemingway-Longhorn 500 kV line, 300 miles with approximately 50% series compensation normally inserted; the western termination will be at the Longhorn switching station near Boardman, Oregon. The B2H line will be also have a third series capacitor bank location with approximately 25% series compensation that will be normally bypassed and available for Remedial Action Scheme insertion.
- Hemingway 500 kV Line Terminal with Shunt Reactors and Series Capacitor
- Longhorn 500 kV Line Terminal
- Maverick Shunt Reactors and Series Capacitor
- Midline 500kV Series Capacitor
- Hemingway-Bowmont #2 230 kV line, 13 miles
- Bowmont-Hubbard 230 kV line, 16 miles
- Midpoint-Kinport 345 kV Series Capacitor Addition
- Midpoint 500/345 kV Second Transformer Addition

The B2H Project has been studied in the annual NERC TPL-001-5.1 study and conforms to the reliability standard and other corresponding regional System Performance requirements, and the WECC “Overview of Policies and Procedures for Project Coordination Review, Project Rating Review, and Progress Reports.”

See the project website (www.idahopower.com/b2h) or the [2023 Idaho Power IRP](#) for additional information

Idaho Power 2025 WECC Annual Supplemental Progress Report

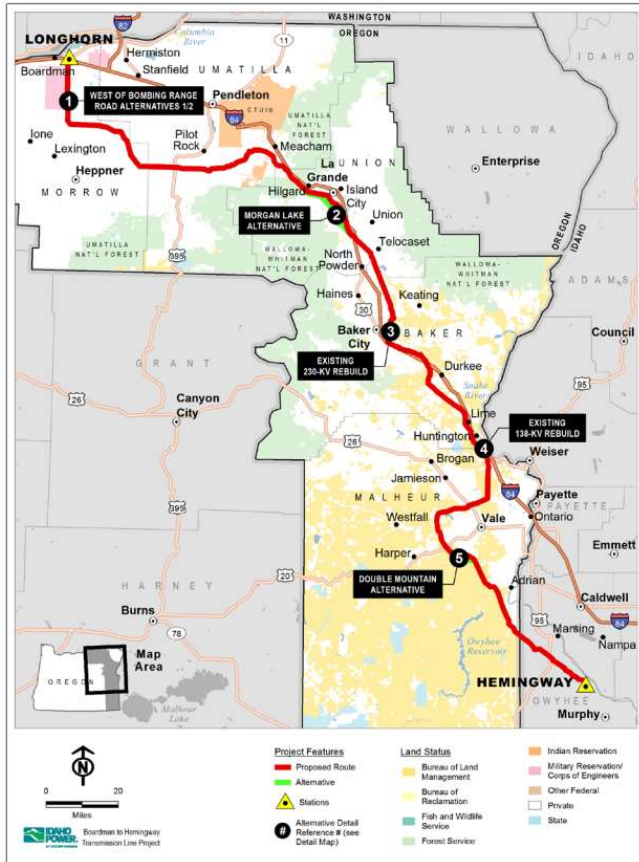


Figure 1: B2H Route Submitted in 2017 EFSC Application for Site Certificate.

B2H Project History

2007

- Idaho Power initiated B2H.
- Idaho Power began collecting existing data for the preliminary routing process.
- Idaho Power filed an Application for Transportation and Utility Systems and Facilities on Federal Lands (Standard Form 299 or SF-299) with BLM on **December 19**.

2008

- Idaho Power filed an SF-299 with the U.S. Forest Service on **March 28**.
- Idaho Power met with county planning and zoning staff, community leaders and elected officials to brief them on the project.
- Idaho Power met with staff from the Bureau of Land Management (BLM) and the Oregon Department of Energy (ODOE) to discuss the project and potential routes.
- Idaho Power hosted the Baker Valley Stakeholder Meeting on **July 22** with Baker Valley representatives to share information on how the preliminary routes are being developed, and to collect feedback on concerns and opportunities.
- In **August**, Idaho Power presented a proposed route and alternate routes to BLM and ODOE.

Idaho Power 2025 WECC Annual Supplemental Progress Report

- On **August 28**, Idaho Power submitted its Notice of Intent (NOI) to submit an Application for a Site Certificate to ODOE.
- On **September 12**, BLM published its [Notice of Intent to Prepare an Environmental Impact Statement](#) in the Federal Register.
- Public scoping meetings were jointly held by BLM and ODOE from **October 21-30**. Idaho Power participated in the public scoping meetings.
- Idaho Power met with interest groups, communities and elected officials.

2009

- ODOE published its Project Order on **January 26**.
- On **March 9**, Idaho Power announced its Community Advisory Process (CAP).
- On **April 3**, Idaho Power removed the Northwest Source Station (formerly known as the Sand Hollow Substation) from the project proposal.
- On **April 10**, BLM published its Public Scoping Report.
- On **May 14**, ODOE held a project informational meeting in Baker City, Oregon, and participated in a tour of Malheur County.
- In **May**, BLM and ODOE jointly mailed the first issue of the *B2H Newswire* (project newsletter).
- On **May 21, May 27 and June 4**, Idaho Power convened the first round of meetings with the South, Central and North Project Advisory Teams (PAT) as part of the CAP.
- On **July 28, 29 and 30**, Idaho Power held the second round of PAT meetings for the North, Central and South PATs, focusing on the development of community siting criteria. Idaho Power announced public meetings as part of the CAP process in August.
- From **August 19 – 27**, Idaho Power conducted its first series of public meetings as part of the CAP process.
- In **September**, Idaho Power held the third round of PAT meetings for the North, Central and South PATs, focusing on preliminary mapping of routes based on resource and community criteria.
- Idaho Power conducted CAP open houses in John Day and Burns, Oregon, on **October 21-22**.
- In **November**, Idaho Power held the first and second round of Grant and Harney County PAT meetings.
- Idaho Power held a Project Order and Idaho Routing Meeting on **November 30**.
- In **December**, Idaho Power held the fourth round of meetings for the North, Central and South PATs, which included a presentation on the status and analysis for each PAT-proposed route and the analysis methods used to evaluate the routes.
- Idaho Power continued meeting with interest groups, communities and elected officials.

2010

- Idaho Power held the third round of meetings for the Grant and Harney County PATs on **January 19 - 20**.
- Idaho Power continued meeting with interest groups, communities and elected officials.
- In **March**, Idaho Power held the fifth round of meetings for the South, Central and North PATs and the fourth round of meetings for the Grant and Harney PATs to present

Idaho Power 2025 WECC Annual Supplemental Progress Report

analysis of revised routes and proposed alternative routes and requested comments on its three route alternatives.

- On **April 6**, Idaho Power announced it will submit the eastern route alternative as its proposed route in its revised applications to BLM and USFS and its notice of intent to ODOE.
- In **April and May**, Idaho Power held the sixth round of meetings for the South, Central and North PATs and the fifth round of meetings for the Grant County PAT to discuss the proposed route and share information about future public participation opportunities.
- On **May 14**, EFSC held a meeting in Baker City, listened to public comments on B2H, and toured Malheur County agricultural operations.
- Idaho Power continued meeting with interest groups, communities and elected officials.
- In **June**, Idaho Power submitted its revised [Standard Form-299 Application](#) (SF-299) and [Preliminary Plan of Development](#) to BLM and USFS to reinstate the federal review process.
- In **July**, Idaho Power submitted a [new Notice of Intent to Apply for a Site Certificate](#) to ODOE.
- In **July**, Idaho Power hosted CAP open houses.
- On **July 16**, ODOE, BLM and USFS reopened the public scoping and comment period and announced public meeting dates. The agencies requested comments from the public and other agencies on Idaho Power's routes and related documents.
- In **August**, ODOE, BLM and USFS hosted a series of public scoping and information meetings about the project.
- On **September 27**, BLM, USFS and ODOE's public scoping period closed.
- The state and federal agencies began their review of public comments for their separate processes.
- Idaho Power met with individual landowners to discuss their routing concerns.

2011

- On January 24, Idaho Power hosted a landowner meeting in Ione, Oregon, to discuss routing updates.
- On **March 22**, Idaho Power hosted a landowner meeting in La Grande, Oregon, to discuss routing alternatives near La Grande and Glass Hill.
- On **May 9**, BLM and USFS published the revised scoping report. BLM reviewed all new comments and published a revised scoping report documenting comments from the 2008 and 2010 comment periods, as well as comments submitted to Idaho Power's CAP.
- In **July**, BLM developed a [Spotlight on Historic Properties](#) fact sheet describing the National Historic Preservation Act (NHPA) Section 106 consultation process.
- On **August 16**, BLM hosted the first in a series of meetings for the NHPA Section 106 consultation process.
- Throughout the summer Idaho Power field crews conducted field operations.
- In **October**, B2H was [named a pilot project](#) for the federal Rapid Response Team for Transmission.

Idaho Power 2025 WECC Annual Supplemental Progress Report

2012

- In **January**, Idaho Power, PacifiCorp and Bonneville Power Administration agreed to [jointly fund](#) the environmental review and permitting process for B2H.
- On **March 22**, ODOE reviewed public and agency comments and issued the [Project Order](#), informing Idaho Power of the issues, regulations and impact analysis areas it must address in its ASC.
- Throughout the spring and summer, Idaho Power field crews conducted field operations.
- In **July**, BLM staff met with landowners along several potential new alternatives.
- On **July 26**, BLM, USFS, and ODOE distributed the [Summer 2012 Newswire](#).
- In **August**, BLM, USFS, ODOE and Idaho Power staff hosted open houses along the B2H route to update the public on new alternatives being considered by BLM, next steps for the federal and state review processes, upcoming documents for public review and future public comment opportunities.
- On **October 2**, BPA identified B2H as its preferred option and [top priority](#) for serving BPA customers in southeastern Idaho.

2013

- In **February**, Idaho Power submitted its preliminary Application for Site Certificate (pASC), which ODOE is currently reviewing for "completeness."
- In **April**, BLM and USFS shared preliminary environmentally preferred alternatives with tribes and cooperating agencies and requested any new information that may not have been considered during the alternatives identification process.
- In **May**, BLM and USFS shared preliminary environmentally preferred alternatives with the public noting the publication of the draft EIS will initiate an opportunity to comment on the analysis and the preferred alternatives.
- On **July 26**, BLM, USFS, and ODOE distributed the [Summer 2013 Newswire](#).

2014

- On August 25, BLM, USFS, and ODOE distributed the [Summer 2014 Newswire](#).
- BLM released the DEIS on December 19, beginning a 90-day public comment period that ended on March 19, 2015.

2015

- BLM hosted seven public open houses along the project route to provide information on the DEIS and an opportunity for the public to ask questions, view the document, and provide written comments.
- The DEIS public comment period concluded on March 19, 2015.

2016

- BLM released the Final EIS and Proposed Land Use Plan Amendments on November 25, beginning a 30-day availability period and land use planning protest period

2017

- BLM released its Record of Decision for the project on November 17.

Idaho Power 2025 WECC Annual Supplemental Progress Report

2018

- USFS published its draft Record of Decision in June and conducted an objection process with a 45-day objection filing period.
- ODOE deemed the ASC complete on September 21 and IPC submitted a final ASC on October 3.
- ODOE and IPC held a series of public information meetings on the complete ASC in each of the five Oregon counties crossed by the proposed transmission line route in October.
- USFS published that agency's Record of Decision November 9. The USFS Record of Decision applies to 6.8 miles of the corridor that crosses National Forest System lands administered by the Wallowa-Whitman National Forest.

2019

- ODOE issued its recommendations on the application in a Draft Proposed Order (DPO) in May. The DPO recommends that EFSC approve Idaho Power's application.
- ODOE held public hearings on the Draft Proposed Order in June.
- The U.S. Department of the Navy released its ROD on October 2.

2020

- ODOE issued a Proposed Order and Notice of Proposed Order and Contested Case in July. The Proposed Order recommends that EFSC approve Idaho Power's application subject to recommended site certificate conditions

2021

- NorthernGrid published the Final Regional Transmission Plan. B2H and a subset of Gateway West (Anticline – Populus – Cedar Hill – Hemingway) are included in the Final Regional Plan. The plan can be found on the NorthernGrid website at www.northerngrid.net
- In August 2021, a federal judge dismissed claims brought by the Stop B2H Coalition challenging the BLM and Forest Service's decisions to approve rights-of-way across federal land for B2H
- Idaho Power, PacifiCorp, and BPA executed a Non-Binding Term Sheet that addresses B2H ownership, transmission service considerations, and asset exchanges. BPA will transfer B2H ownership interest to Idaho Power. PacifiCorp and Idaho Power will jointly own the line – PAC 55%, IPC 45%.
- Facilities used by PacifiCorp to serve BPA's customers in SE Idaho will be transferred to Idaho Power. BPA will acquire network transmission service over Idaho Power to serve its customers. PacifiCorp will acquire additional transmission assets across Southern Idaho. Idaho Power will acquire PacifiCorp transmission between Eastern Idaho and Four Corners Substation (200 MW bidirectional).
- Idaho Power and PAC will construct a B2H midline series capacitor substation around the mid-point of the B2H transmission line. This midline series capacitor—identified through joint planning studies by Idaho Power, PAC, and BPA—is required to address interactions between B2H and other existing transmission paths and to meet the three parties' needs. This Midline substation was not included in the original project scope and

Idaho Power 2025 WECC Annual Supplemental Progress Report

will require additional permitting. It is anticipated that this additional permitting will not delay the B2H in-service date.

2022

- Oregon Energy Facility Siting Council approved a site certificate in a 6-0 vote. The decision was appealed to the Oregon Supreme Court.
- Third party lawsuits challenging BLM and U.S. Forest Service RODs were dismissed without appeal.
- Idaho Power met with owners of land along the project route to negotiate easements and rights-of-entry.
- Idaho Power conducted geotechnical and environmental surveys along the project route.
- On September 30th, Idaho Power applied for Certificates of Public Convenience and Necessity (CPCN) from the Idaho Public Utilities Commission and Oregon Public Utility Commission. The CPCNs would recognize that B2H is in the public interest.

2023

- Design, bidding, and contract negotiations for construction get underway .
- Oregon Supreme Court issued a ruling on the appeal in favor of the B2H site certificate.
- Idaho Power, PacifiCorp and BPA finalized agreements related to B2H.
- Owyhee County in Idaho grants Idaho Power a permit to build the eastern end of the line.
- The Oregon Public Utility Commission approves a CPCN for B2H.
- The Idaho Public Utilities Commission approves a CPCN for B2H.

2024

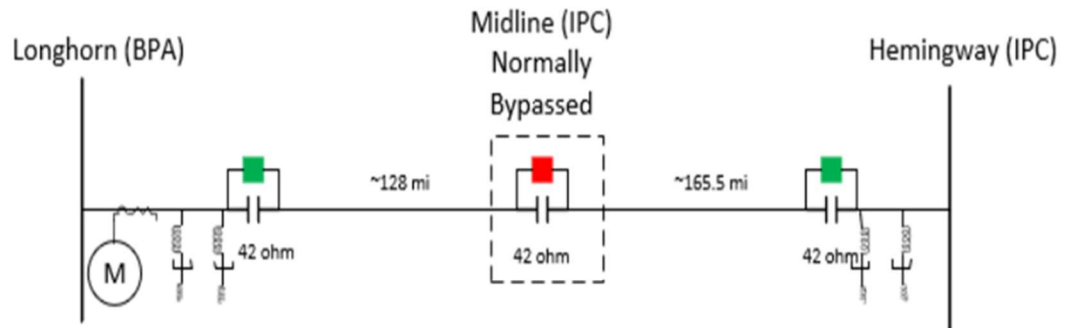
- Idaho Power's second amendment to the site certificate was unanimously approved by the ODOE Energy and Facility Siting Council (EFSC) in August 2024.
- The first amendment appeal by one party to the Union County Circuit Court was dismissed in October 2024.
- Land field surveying, easement preparation, and appraisal work begin to support easement acquisition.
- Transmission line design completed.
- Material procurement is in progress and long lead materials begin arriving in Oregon.

2025

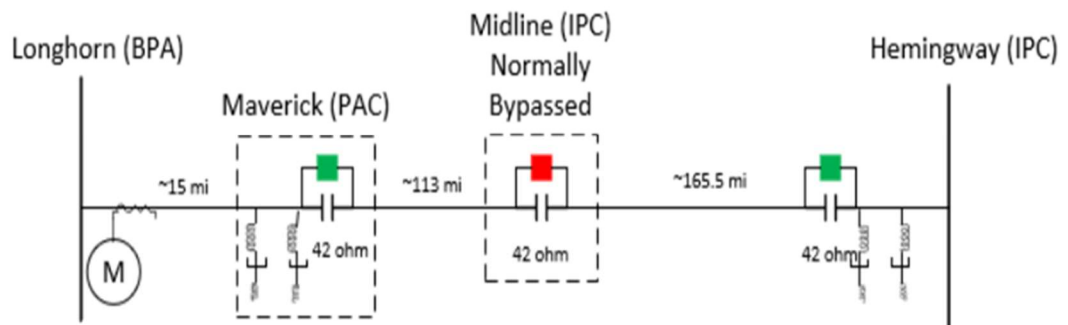
- A reconvened PRG for Path 14 was initiated on 2/21/2025 with all the original member WECC entities to study
 - the addition of the normally bypassed Midline Capacitor bank which can be inserted by the BPA AC RAS following N-2 500kV outages to mitigate overloads on NWACI.
 - New Hemingway station layout to eliminate breaker failure with B2H and Hemingway 500/230kv transformer double.

Idaho Power 2025 WECC Annual Supplemental Progress Report

- Location change of the series capacitor from Longhorn to Maverick station which is 15 miles closer to Hemingway from Longhorn.



B2H Metered Interface
for Path 14



B2H Metered Interface
for Path 14

- Confirm that the east to west Path 14 rating with B2H addition is achievable prior to Gateway west.
- Study different system conditions that have been seen operationally that were not originally studied. The stressed condition that is being studied is the worst case south-to-north flow on COI/PDCI with Path 14 at its limits
- This PRG is ongoing with a request to all WECC entities to expand the audience to any entities that express interest. Additional studies have been added during this expansion
- Continued surveying, easement preparation, and appraisal work to support easement acquisition.
- Access road construction begins in June
- First B2H structures are completed in October

Looking Ahead

- Construction will continue on B2H, with final energization of the new line on track to be completed by 2027
- Working towards PRG completion, Spring 2026.

Idaho Power 2025 WECC Annual Supplemental Progress Report

Gateway West Transmission Project

Please see the Gateway West Transmission Project section in PacifiCorp's 2024 WECC Annual Progress Report for current Gateway West Transmission Project details. Additional information can also be found on [PacifiCorp's Energy Gateway](#) website.

Based on the agreement between PacifiCorp and Idaho Power, executed in early 2012, PacifiCorp (Rocky Mountain Power) will assume responsibility for shepherding all Gateway West transmission facilities through the National Environmental Policy Act (NEPA) process and through the project construction phase.

The NorthernGrid 2024-2025 Regional Transmission Plan (biannual report) includes the Anticline – Populus 500kV, Populus– Cedar Hill 500kV, Cedar Hill – Midpoint, and Midpoint – Hemingway #2 500 kV AC Gateway West segments located in Wyoming and Idaho. For additional details, please see the [NorthernGrid Regional Transmission Plan for the 2024-2025 NorthernGrid Planning Cycle](#).

Idaho Power and PacifiCorp are pursuing the joint development of the Gateway West project, a high-voltage transmission line project between a substation located near Douglas, Wyoming, and the Hemingway substation located near Boise, Idaho. In 2012, Idaho Power and PacifiCorp entered a joint funding agreement for permitting of the project.

The permitting phase of the Gateway West project was subject to review and approval of the BLM. The BLM has published its records of decision for all segments of the transmission line. In 2020 and 2024, PacifiCorp completed construction and commissioned a segments of its portion of the project in Wyoming. In March 2023, PacifiCorp initiated the pre-construction phase of 620 miles of 500-kV transmission line from the Populus substation near Downey, Idaho, to the Hemingway substation near Boise, Idaho. Current permitting and pre-construction activities are focused on the section of line between Hemingway and Midpoint substations. Idaho Power expects the in-service date for this section of line, or a portion of this section, will be 2028 or later. Idaho Power and PacifiCorp continue to coordinate the timing of next steps to best meet customer and system needs including potentially modifying the ownership structure of a few segments of the project.

GWW Second Midpoint-Hemingway Project History

2024

- Companies began preconstruction activities on the Hemingway to Midpoint #2 segment. Those activities included environmental and cultural surveys, transmission line design engineering and right of entry efforts.
- Mayfield (MYFD) 500kV substation:

A new 500kV substation MYFD has been proposed by Idaho Power to connect on the second 500kV circuit from Midpoint to Hemingway Gateway West Section. The resulting lines will be an approximate 36 mile Hemingway-Mayfield 500kV, and an approximate 90 mile Mayfield-Mipoint 500kV line. The new transmission substation is in proximity to Idaho Power's main load center and will serve Idaho Power native load and

Idaho Power 2025 WECC Annual Supplemental Progress Report

mitigate category TPL contingencies in the near term planning horizon. The planned in-service date is end of 2028 for everything except for the Mayfield-MPSN section GWW which has a planned inservice date of end of 2030.

- Planned MYFD facilities include:
 - Hemingway 500 kV Line Terminal
 - Midpoint 500 kV Line Terminal
 - Mayfield 500/230 kV Transformer
 - Loop in of existing Chip-Rattlesnake 230 kV line
 - Chip-Mayfield 230 kV line, approx.16 miles
 - Mayfield-Rattlesnake 230 kV line, approx.21 miles
 - Pleasant Valley – Mayfield 230kV line, approx. 6 miles

2025

- Continued preconstruction activities including environmental and cultural surveys, 60% transmission line design engineering, and right of entry efforts.
- Mayfield (MYFD) 500kV Substation
 - Transmission line easements were acquired and additional substation land was purchased
 - Initiated substation design and purchased long lead material

Palette Junction Station Project

The new 230kV Palette Junction substation (PLJN) is planned to be installed north of Oxbow, OR as a switching station near the intersection point of three existing 230kV lines in the area: Walla Walla-Hurricane-Hells Canyon 230kV, Lolo-Imnaha-Oxbow 230kV, and Brownlee-Hells Canyon 230kV. The station will improve the distribution of transmission flows across the 230kV lines. This project will also add series reactors which are balanced with the existing series reactors on the Lolo-Oxbow line to the finalized Palette Junction-Brownlee and Palette Junction – Oxbow 230kV lines. The Copperfield RAS will be modified to account for the new series reactors. This project will be submitted to be studied through the WECC Path Rating Process in 2026.

The initial phase of Palette Junction will be a tap of the Oxbow – Lolo 230kV line to interconnect a small distribution transformer for PacifiCorp to serve its local area load. This initial phase is planned to be placed into service in 2027. The remainder of the Palette Junction project including the interconnection of the remaining 230kV lines, transmission line breakers, addition of the series reactors at Copperfield, and associated communication and RAS upgrades will be energized in 2028. The final phase of this project is contingent on Idaho Power receiving anticipated Grid Resilience and Innovation Partnerships (GRIP) funding from the DOE.

Palette Junction Project History

2024

- Cases are being built to submit this project for a rating on Path 14 through the WECC Path rating process

Idaho Power 2025 WECC Annual Supplemental Progress Report

- Station design is ongoing

2025

- Design is progressing for all the elements of the Palette project.
- The project now has a lay down yard.
- Permitting has been progressing.
- The PRG was put on hold to pursue the Path 14 reconvened PRG in 2025.

Please direct questions or concerns regarding these projects to:

Linnea Gentry
Senior Engineer
Idaho Power Company
1221 W Idaho St.
P.O. Box 70
Boise, Idaho 83707-0070
Tel. (208) 388-2043
E-mail LGentry@idahopower.com