

Western Interconnection Weekly Wildfire Update

This summary provides an overview of the potential wildfire risk to the bulk power system. Please note that the information is meant for general use only, as wildfires are dynamic, and circumstances can change rapidly.

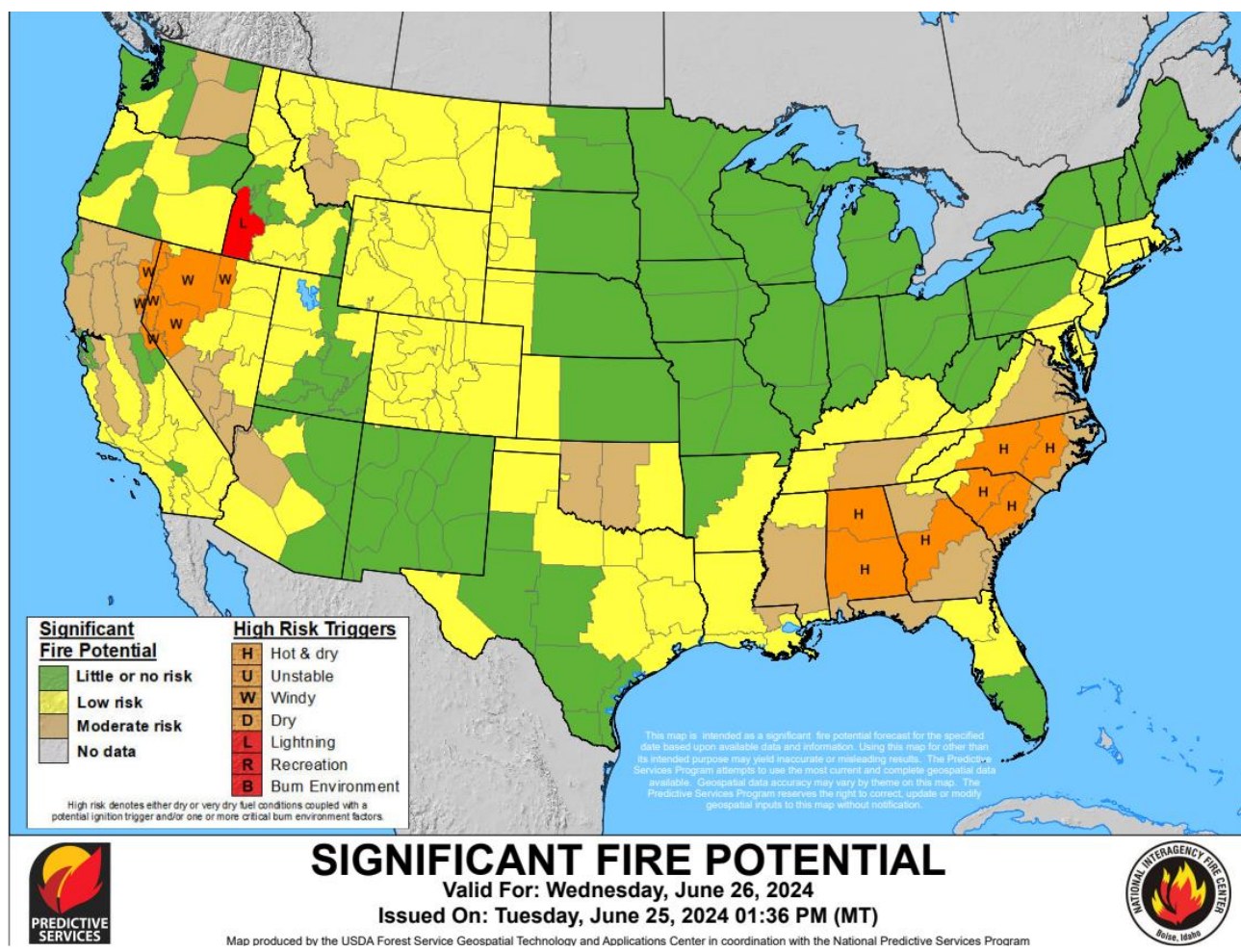
Active Wildfires (U.S. and Canada)

In the Western U.S., the National Interagency Fire Center (NIFC) reports 18 large (>1,000 acres) wildfires burning in nine states.

In Western Canada, British Columbia has no fires burning out of control. Alberta has one fire burning out of control with minor reliability concerns for area transmission, mostly lower voltages.

Active fires in the Western Interconnection June 26, 2024

- Western Interconnection (U.S.)—178
- Alberta—14
- British Columbia—91
- Total—283



Western Interconnection Transmission Lines at Risk (U.S.)

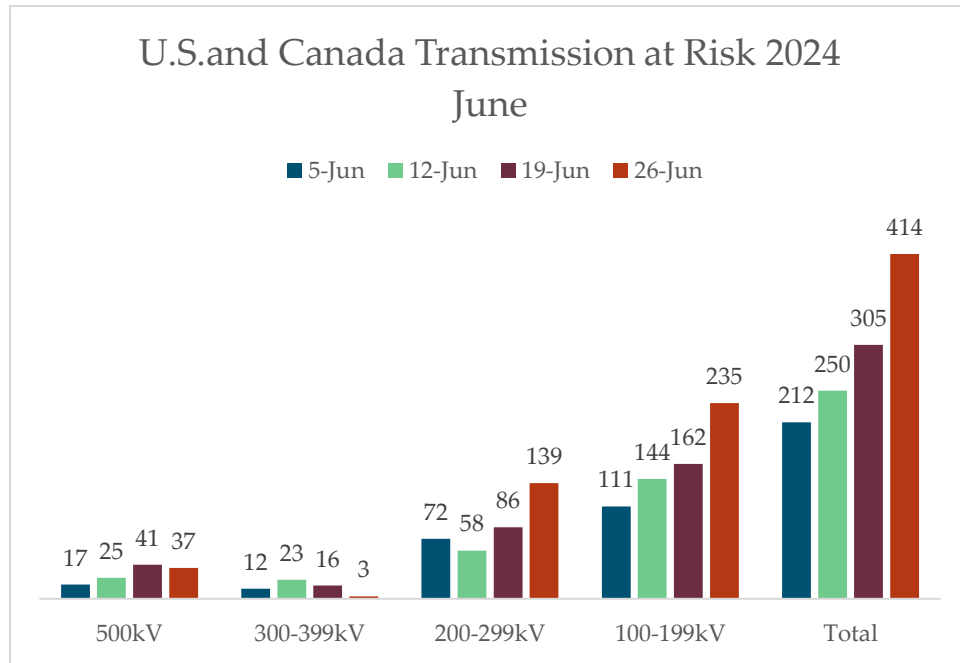
An at-risk transmission line is any line within three miles of an active wildfire, a new incident discovered in the past 24 hours, or a hotspot detected by NOAA satellite.

June 26, 2024, Lines at Risk

The interconnection had a significant increase in lines at risk for 115 kV and 230 kV lines during the past week. This is mainly due to an increase in smaller fires throughout the interconnection.

Fires causing lines at risk:

- Refuge Incident, California
- Sayer Incident, Arizona
- South Fork Fire, New Mexico
- Salt Fire, New Mexico



Events of Note

U.S. Western interconnection

The Aero fire, a fast-spreading vegetation fire near Copperopolis, California, ignited and quickly burned 5,245 acres, forcing evacuations. **Update:** This fire is at 95% containment.

BES Impacts

PG&E created an electrical island after several 115 kV lines relayed. Local hydro was used to maintain island condition. **Update:** The electrical island remained in place until the evening of June 18 when PG&E terminated the island condition.

Public Service Company of New Mexico shut off electricity to part of the Ruidoso, New Mexico, village due to the South Fork fire. The utility said it cut power to some 2,000 homes and businesses. **Update:** The fire is at 54% containment with 17,556 acres burned. Electric service has been restored to emergency services. It is unknown whether 115 kV lines owned by a local utility are affected in the vicinity of the fire. State police in southern New Mexico said they were experiencing phone outages that might affect responses to emergencies. **Update:** 911 communications and some businesses have resumed in Ruidoso. The 115 kV lines are being repaired.

Wildfires of Note (Canada)

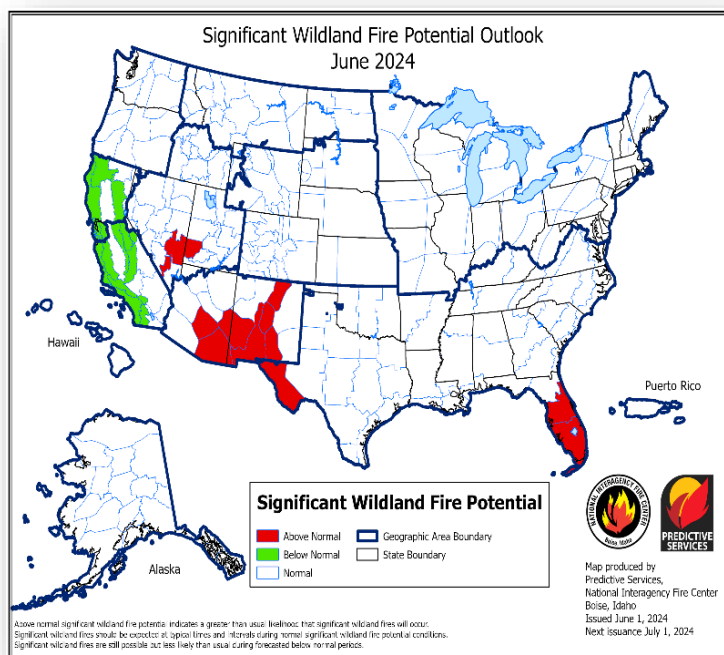
A wildfire of note is determined to be of significant public interest and may pose a threat to public safety, communities, or critical infrastructure.



Alberta, June 25

The Amber River fire began June 22. The fire is classified as *out of control* at approximately 8,278 acres. evacuation notice for Zama has been posted.

Wildfire Outlook for June 2024—Above-normal fire conditions are predicted across large areas of British Columbia, Alberta, Arizona, and New Mexico with below-normal conditions expected for the coastal regions of California.



Weekly Outlook—June 24-30

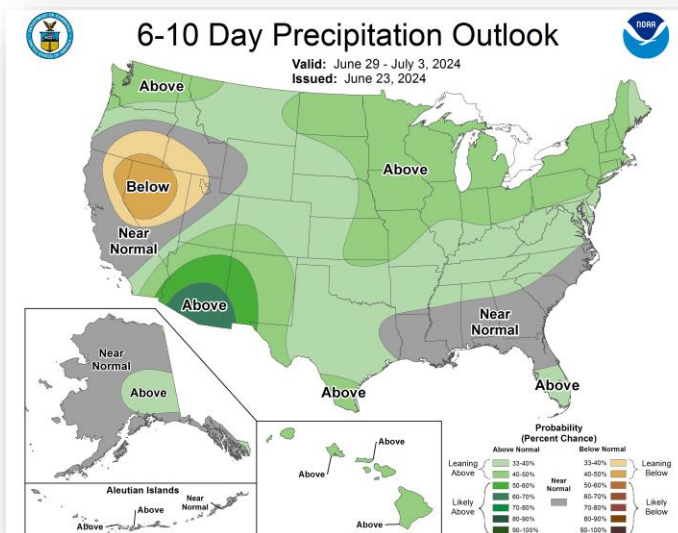
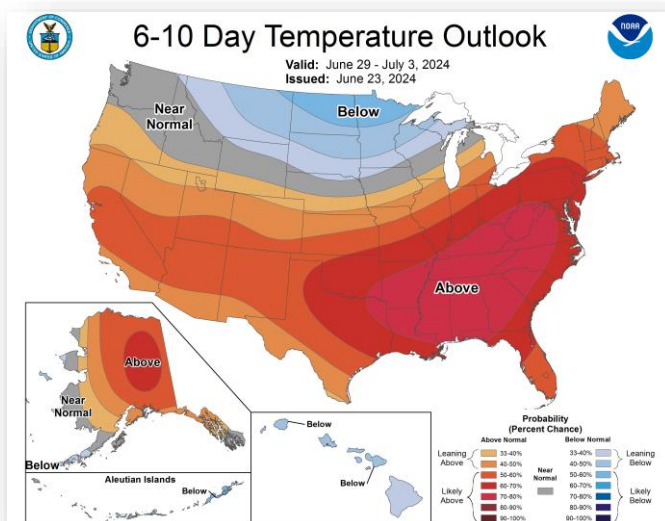
Significant fire potential for this week in the U.S. Western Interconnection.

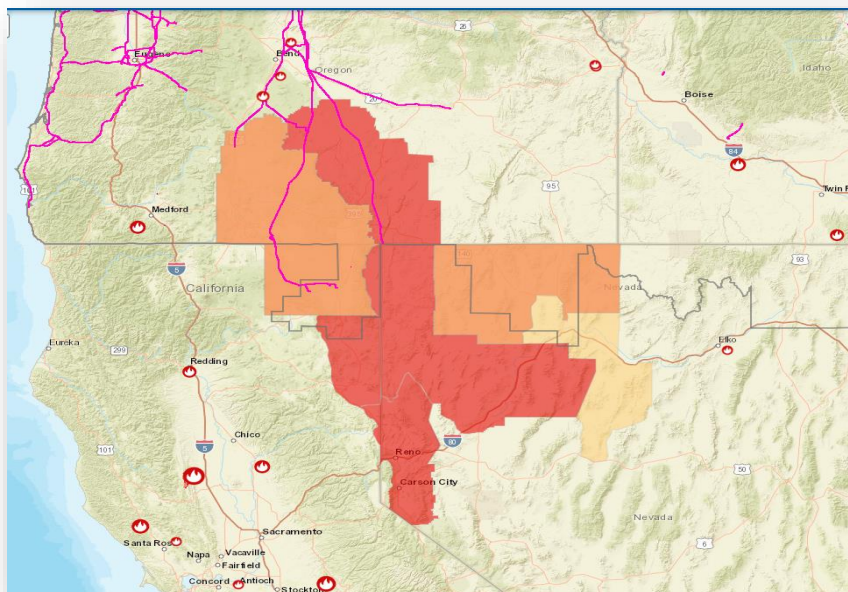
A large part of the interconnection will have mostly low risk. Wednesday, June 26, shows lightening as high risk for southeast Idaho.

- Interactive map link—[National 7-Day Significant Fire Potential \(nwcg.gov\)](https://nwcg.gov)

Fire Weather Conditions

Normal seasonal weather will be predominant in the Pacific Northwest, Montana, Idaho, and Wyoming. The extended 6-to-10-day outlook has above-average temperatures forecast for most of the rest of the interconnection. Precipitation is forecast for below-normal to normal during the same time. Red flag warnings will be in effect through northeastern California, southcentral Oregon, and northwestern Nevada, New Mexico, and Colorado.





<https://www.weather.gov/wwamap/png/US.png>

Wildfire Smoke and Air Quality

Wildfire smoke layers are not posing any reliability threats this week.

Current Wildfire Conditions

Current wildfire conditions can be seen on the [WECC Wildfire Dashboard](https://www.wecc.org/wildfire-dashboard) posted on WECC.org. Users new to WECC.org will need to create a user ID and password for access.

