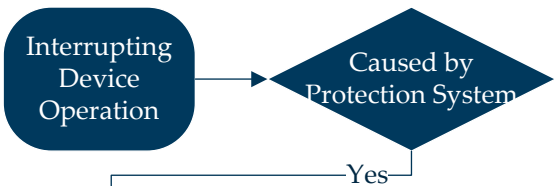


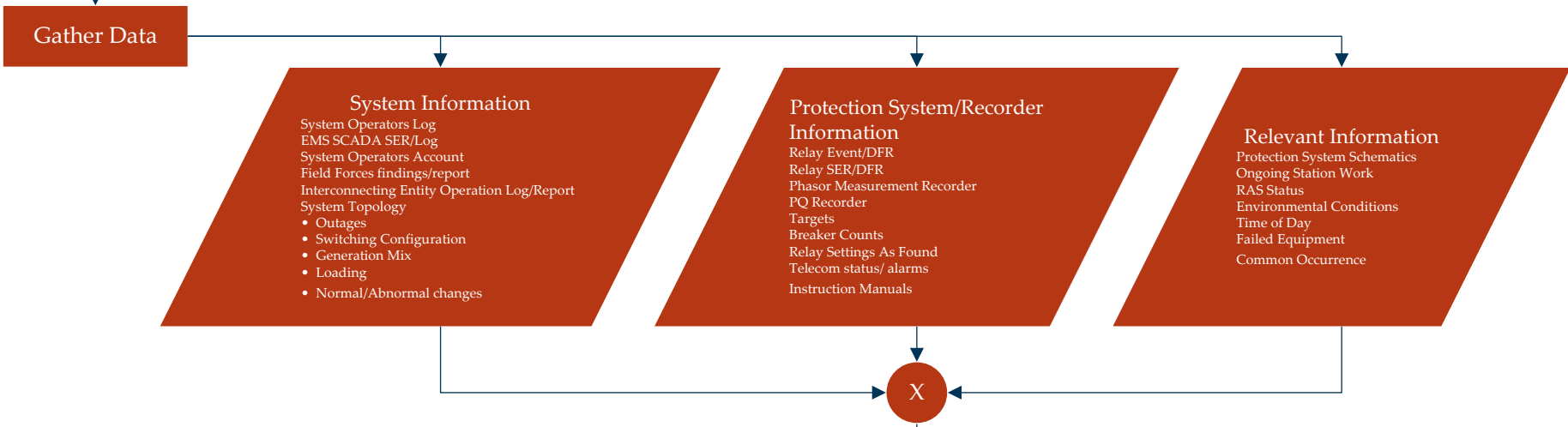
System Operation Investigation Analysis

“Every Misoperation has a cause that can be found.” -Bill Middaugh, 2017

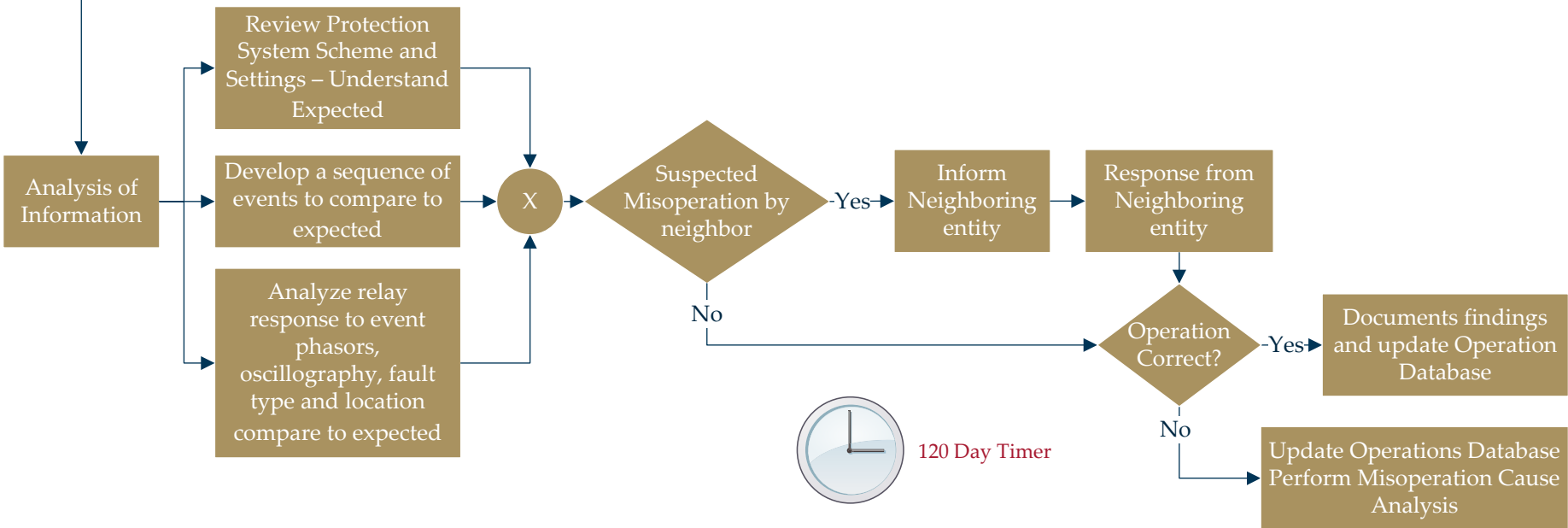
Entities Analysis
Process Initiated



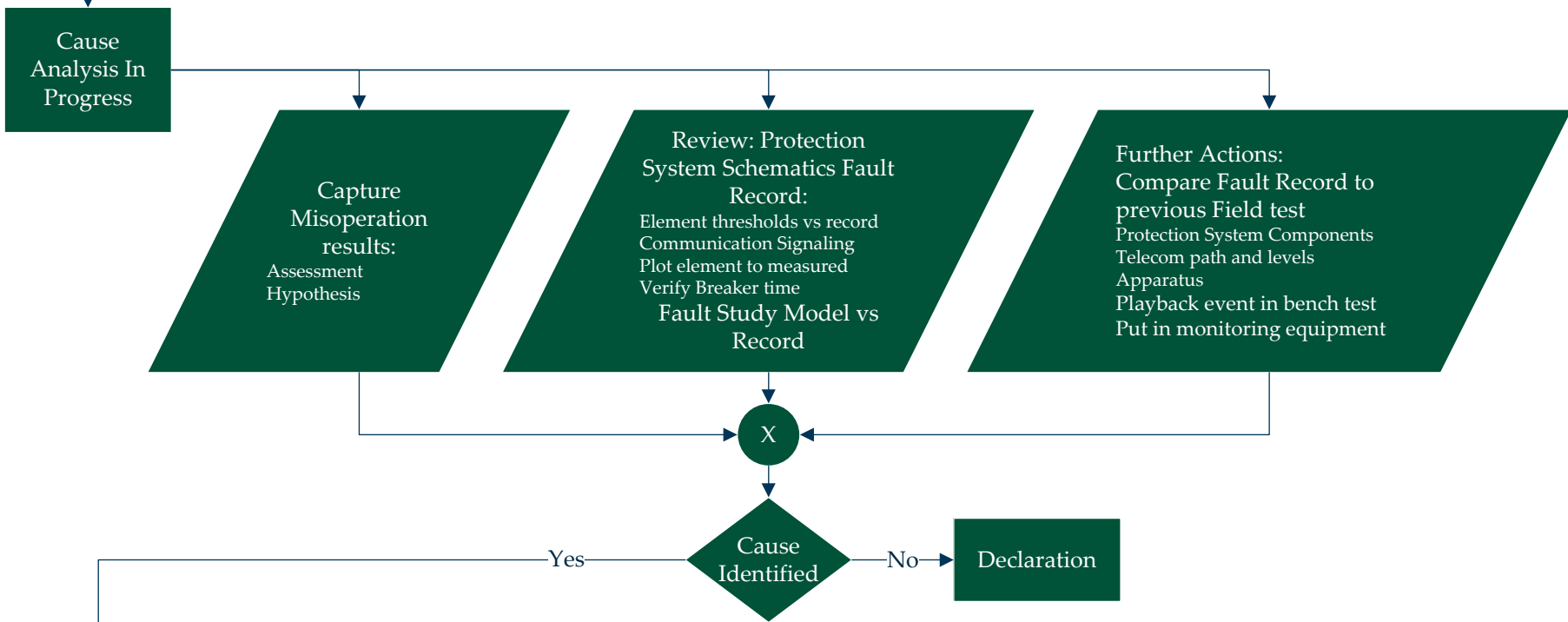
Operation Data Collection



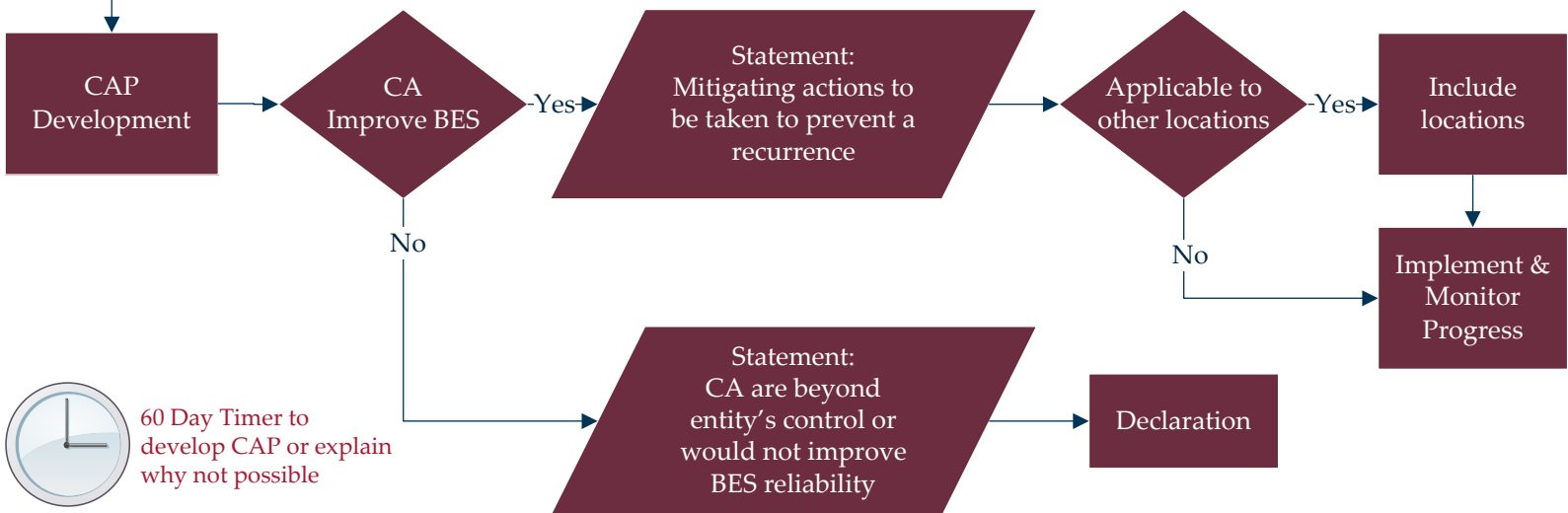
Operation Assessment



Misoperation Identification



Corrective Action Plan



Note: Each entity may be different as an area may do all functions or partial. The diagram is a blueprint for best practices