



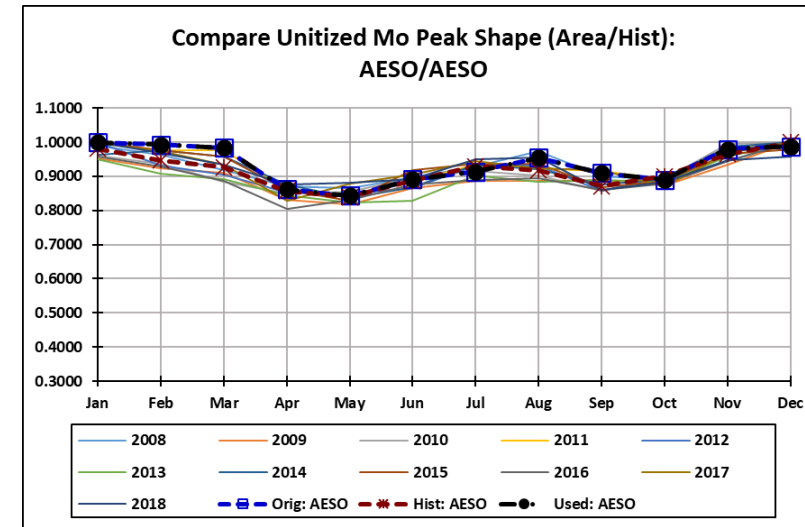
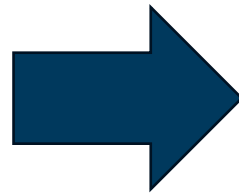
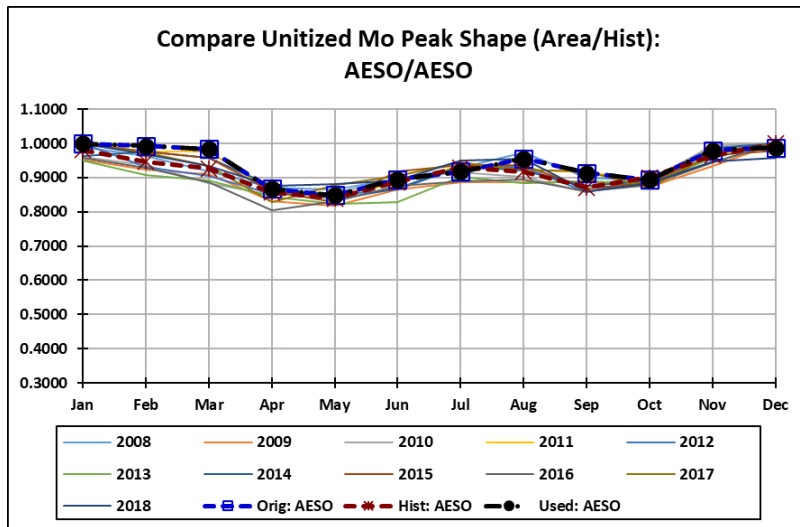
PCDS

August 2, 2023

WECC

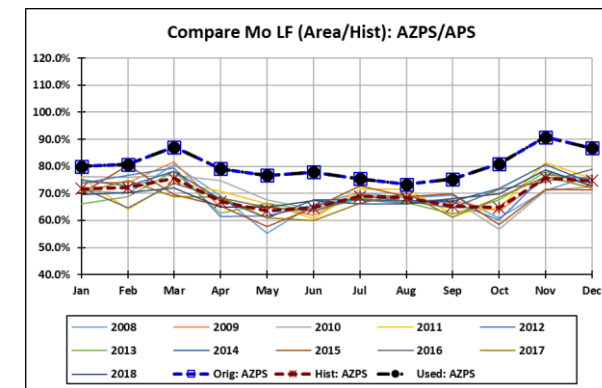
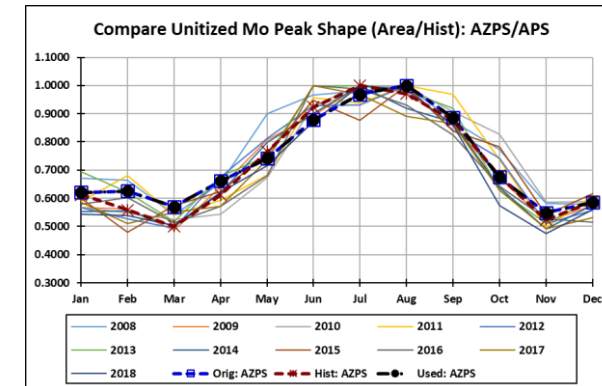
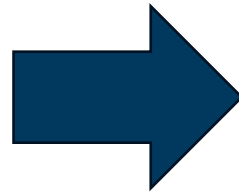
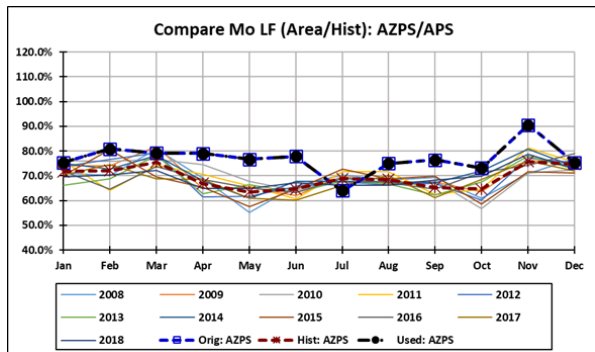
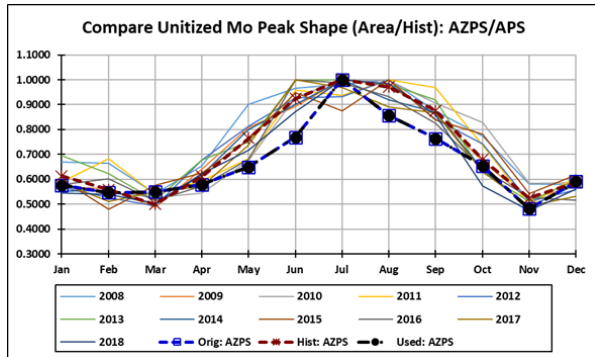
Code 18 and 19

- AESO-Same code 18 and 19
 - AESO Code 19 was 0 for all months in last cycle—Looks good, change shape very minimally



Code 18 and 19

- AZPS—Weird pattern in initial submittal
 - New AZPS Data



Loads

- Code 19 fixed for AESO and AZPS, others looked normal
- PGE said its data was correct
- NEVP was about 2x to 3x SPPC for code 1 peak and monthly energy

Follow-Up Items

- Distribute BTM-PV gen to conforming load buses only; response
 - Generators distribute to an area, which is to the conforming load buses only. Non-conforming loads will be addressed individually in the calculation out of area distribution
 - For nonconforming loads, the load will be constant for all hours. Generator distribution to area will not be assigned to nonconforming load buses if no conforming load at this bus
- Comp load model
 - Only for dynamics, composite load info is not saved in PSLF PF
 - The only thing saved in PSLF is the CLZONE name, which is the climate zone name, which assigned each load to a composite load model in the dynamics
 - You can pull out BTM portion, but doesn't affect PCM
- EIA 860/861 BTM Storage

Follow-Up Items

- 2032 ADS Updates, Duplicate Bus and IDs, Data Issues
 - Bus IDs fixed, Effat's Generation changes (Except for Valley center updates)—Updated
 - Still need to fix Heat Rates, Natural Gas assignments, look at congestion

Today's Topics

- BTM PV
- BTM Storage

BTM Energy

- Added in BTM Rooftop Solar Energy back in based off the NREL Shapes. Shape x capacity to the L&R Energy
- Might be new NREL DPV unitized shapes
 - (Used for BTM Energy in Loads and DG BTM-PV Shapes)
- BTM-PV_DG-NREL DPV Data
 - Each generator at a county level
 - Need new 2034 topology to get updated proportionality of load buses. (NREL) New shapes?
 - Area level option, new capacities; new shapes?
 - Generator following a shape, distributed by area

Phase Shifter

- Demo
 - Ron Schellberg and Jamie Austin compared realistic phase shifts compared to our cases
 - Phase shifter settings
 - BK did analysis based on price changes
 - Phase shifter range, price
 - Phase shifters affect each other
 - Comparison spreadsheet

