



PCDS Meeting

July 17, 2024

Jon Jensen and Anuj Patil

WECC

Updates

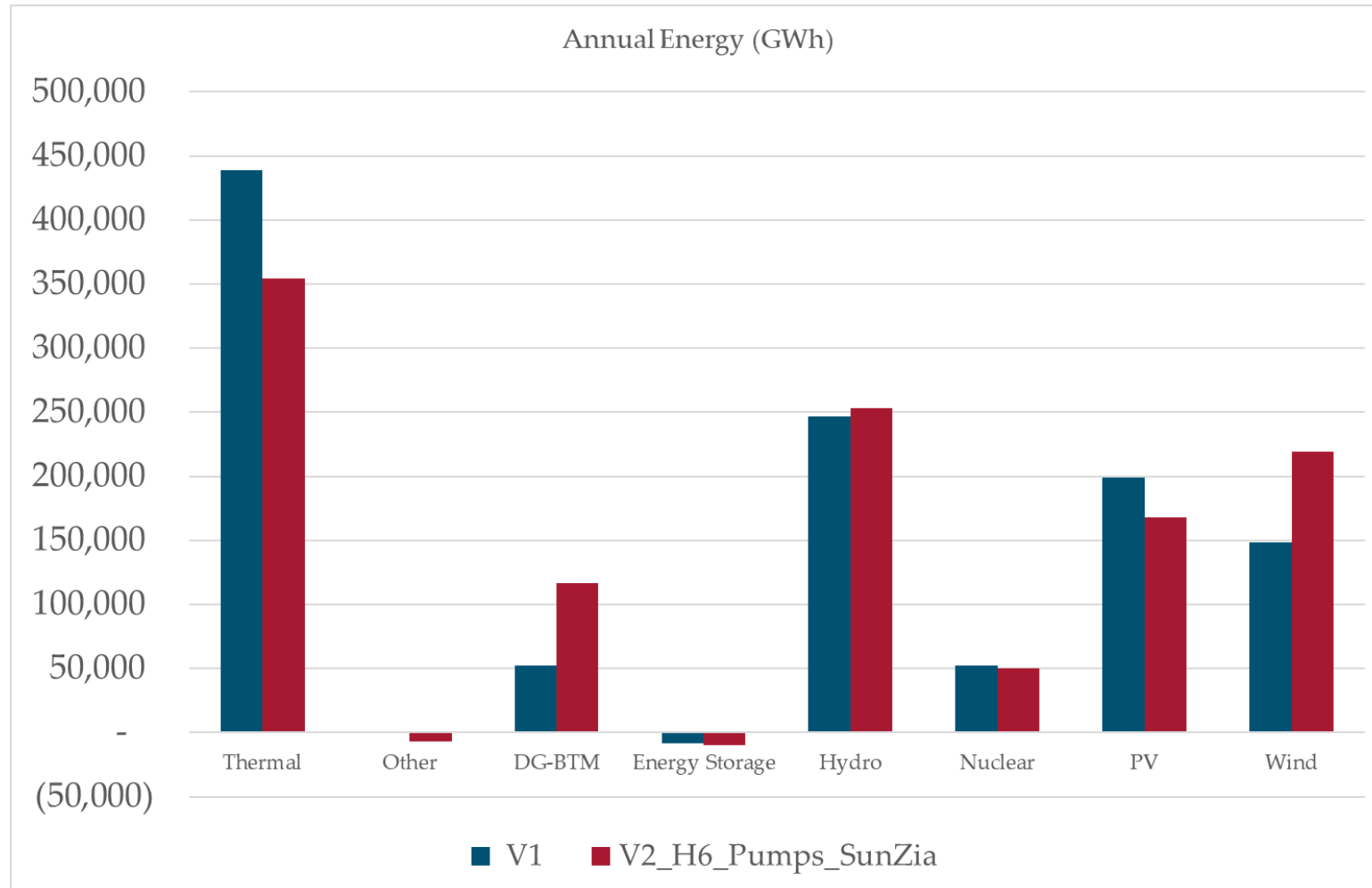
- Updated wind shape for “West Line Solar PV”
- Removed DC-Tie loads on same bus as gens
- Changed Cherokee four subtype from coal to gas
- Colstrip 3 is on, Colstrip 4 is off
- Updated DG-BTM capacities in Genlist
- Updated gen unit IDs to match power flow
- Add latest PNNL hydro
- AB32
- Maintenance
- Added missing pumps, Buena Vista, Delta, etc.

To do

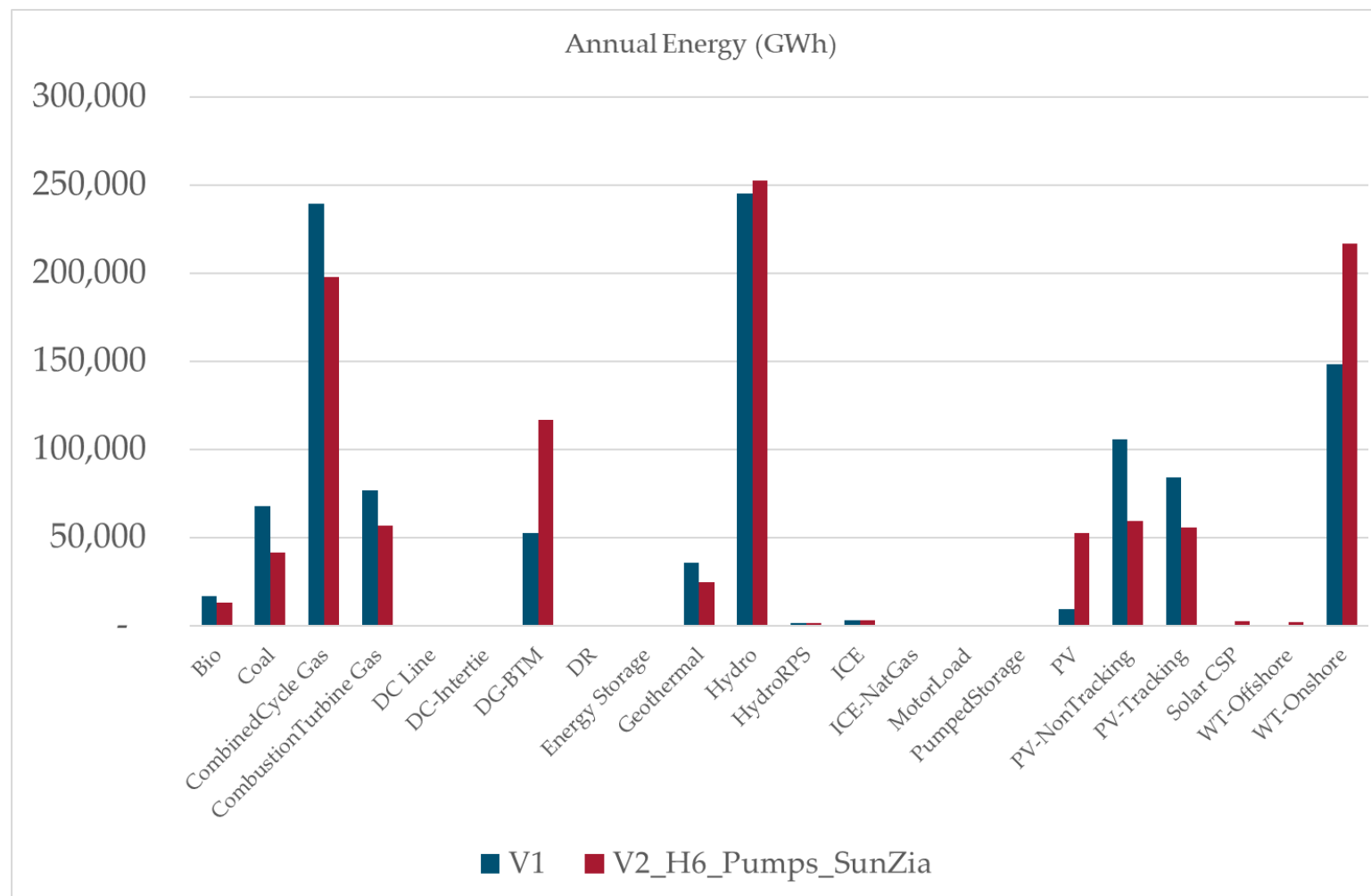
- Placed generators (“X” gens)—Relocate gens
- Fix island in SunZia

Annual Energy

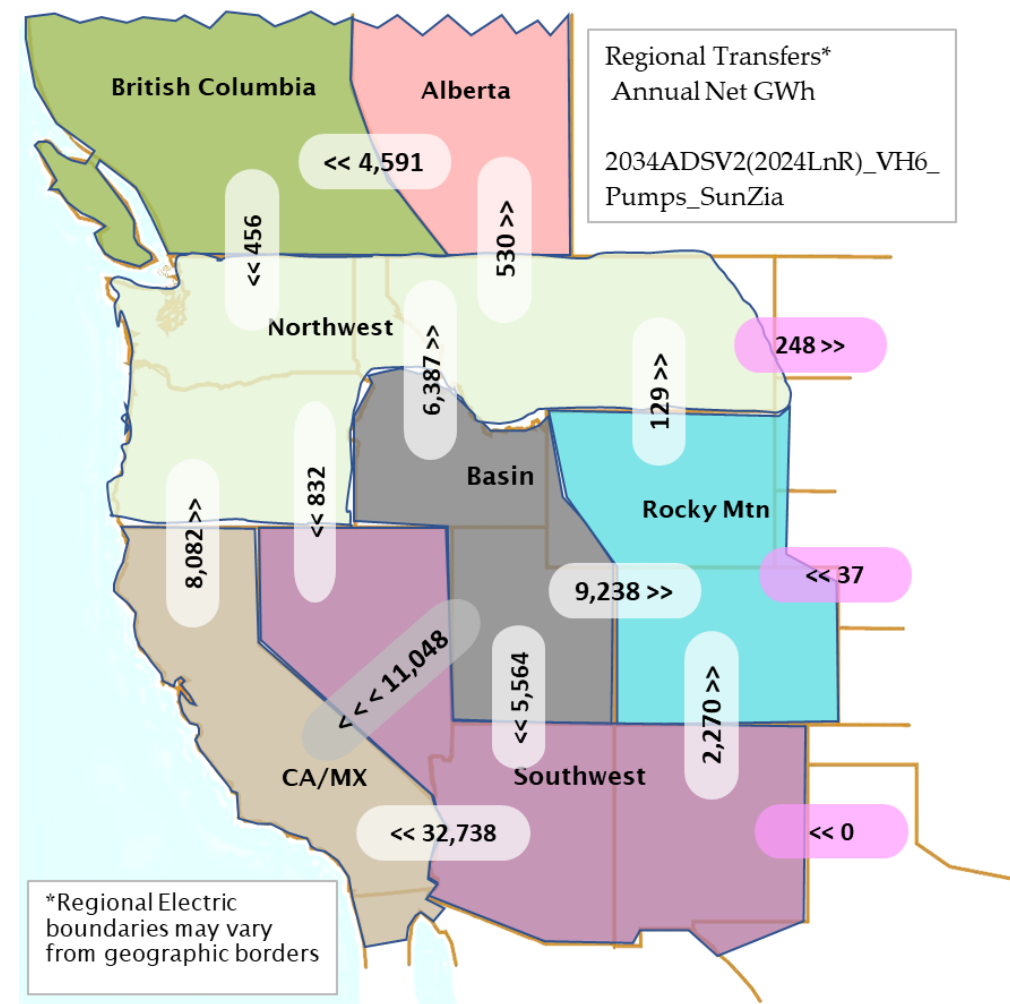
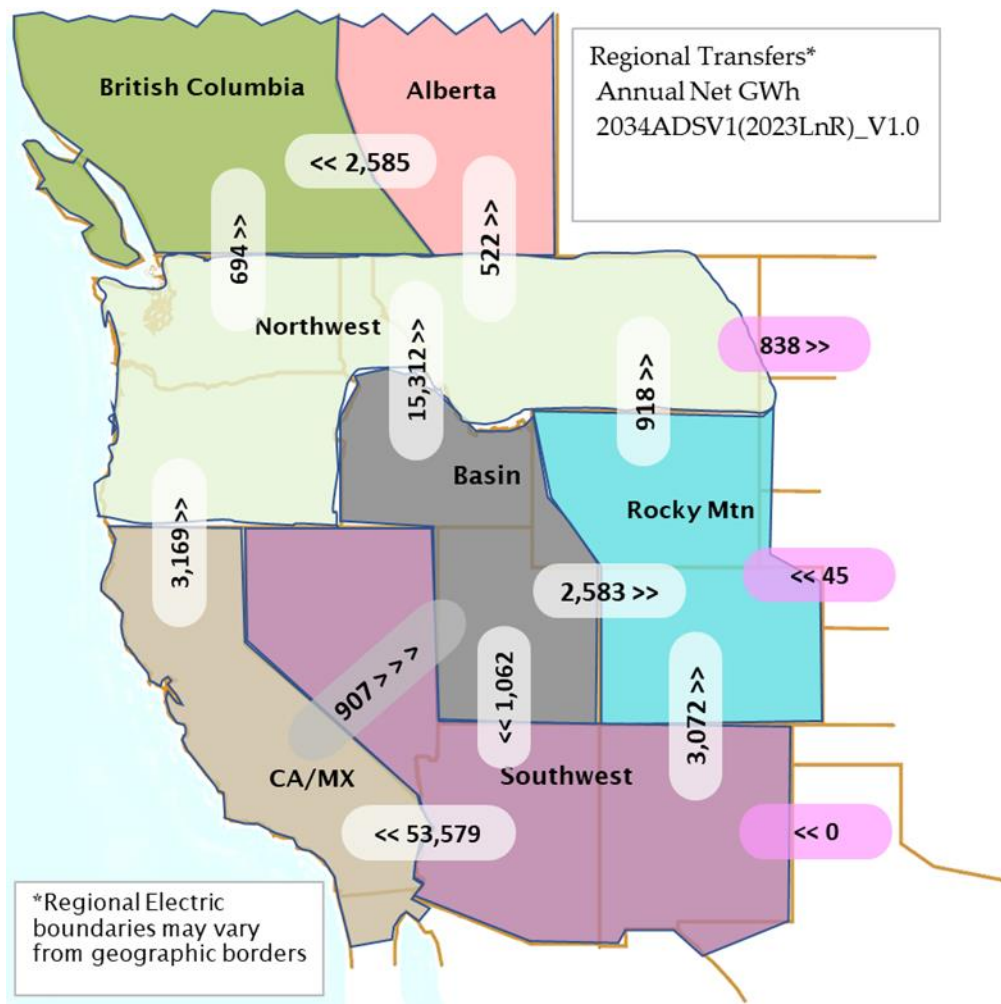
0MWh Unserved load



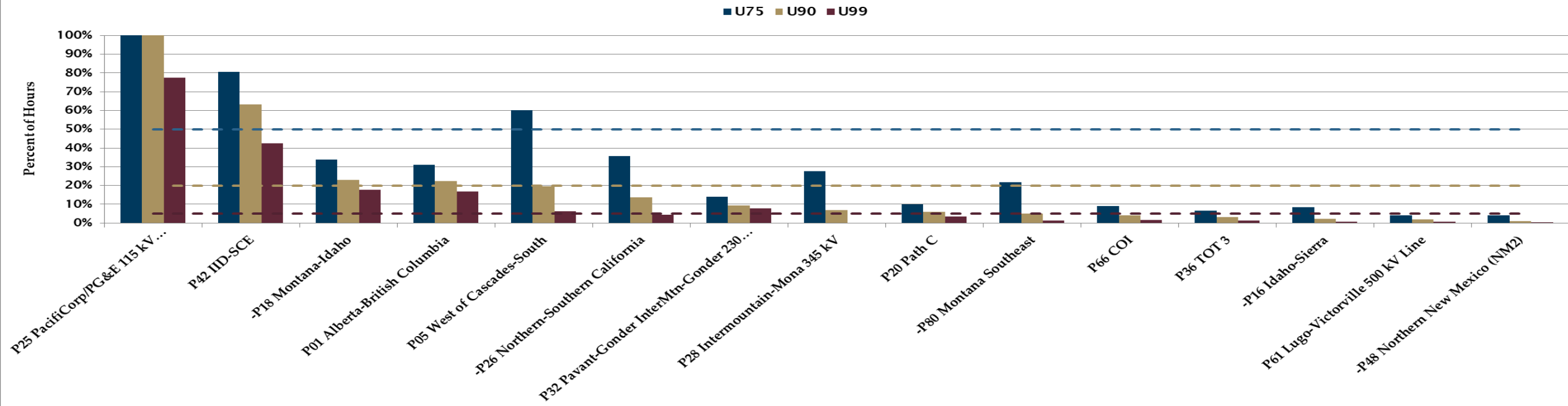
Annual Energy



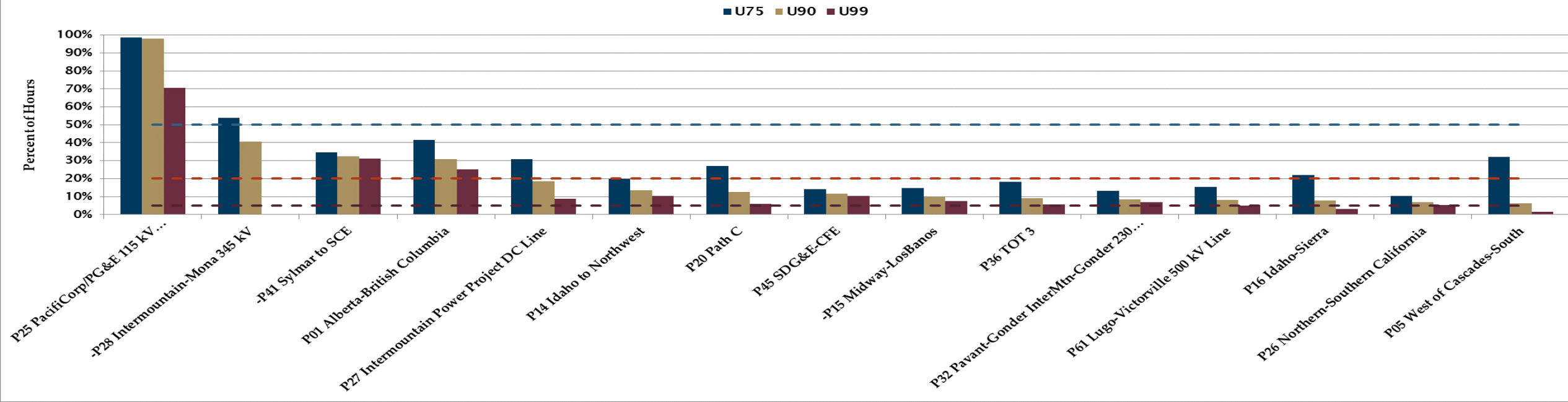
Annual Net Interchange



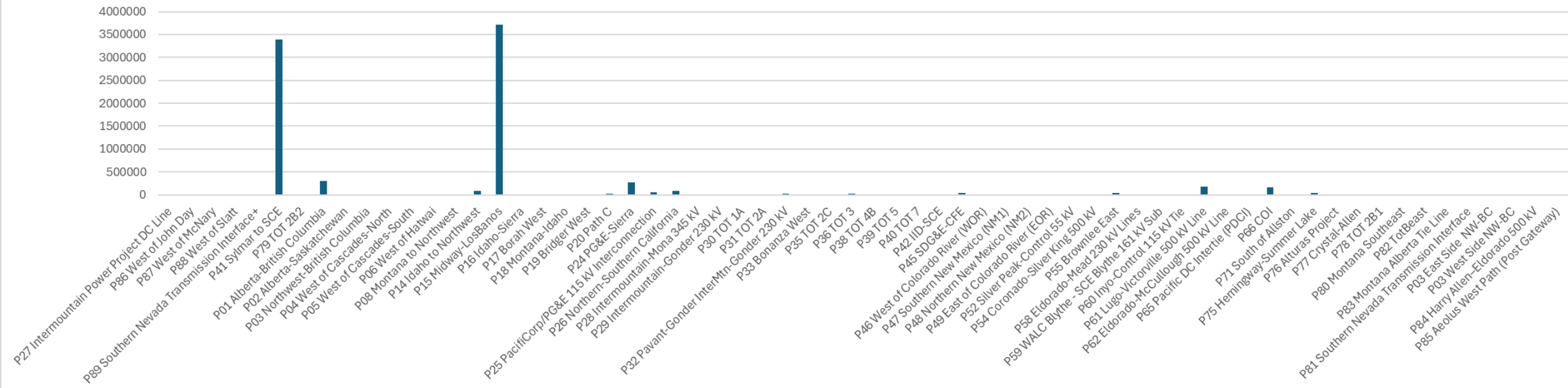
Most Heavily Utilized Paths - 2034ADSV1(2023LnR)_V1.0



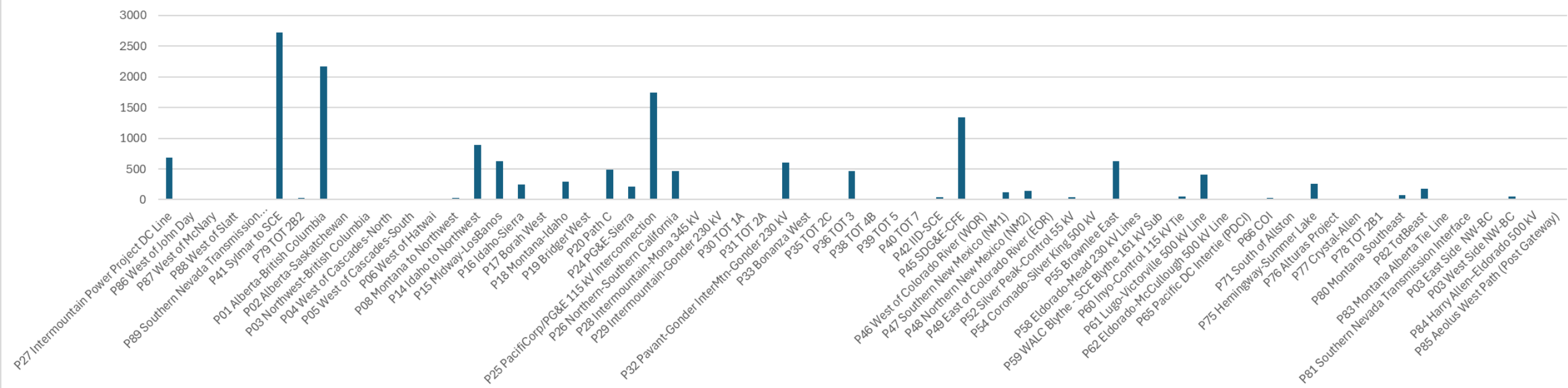
Most Heavily Utilized Paths - 2034ADSV2(2024LnR)_H6_Pumps_SunZia



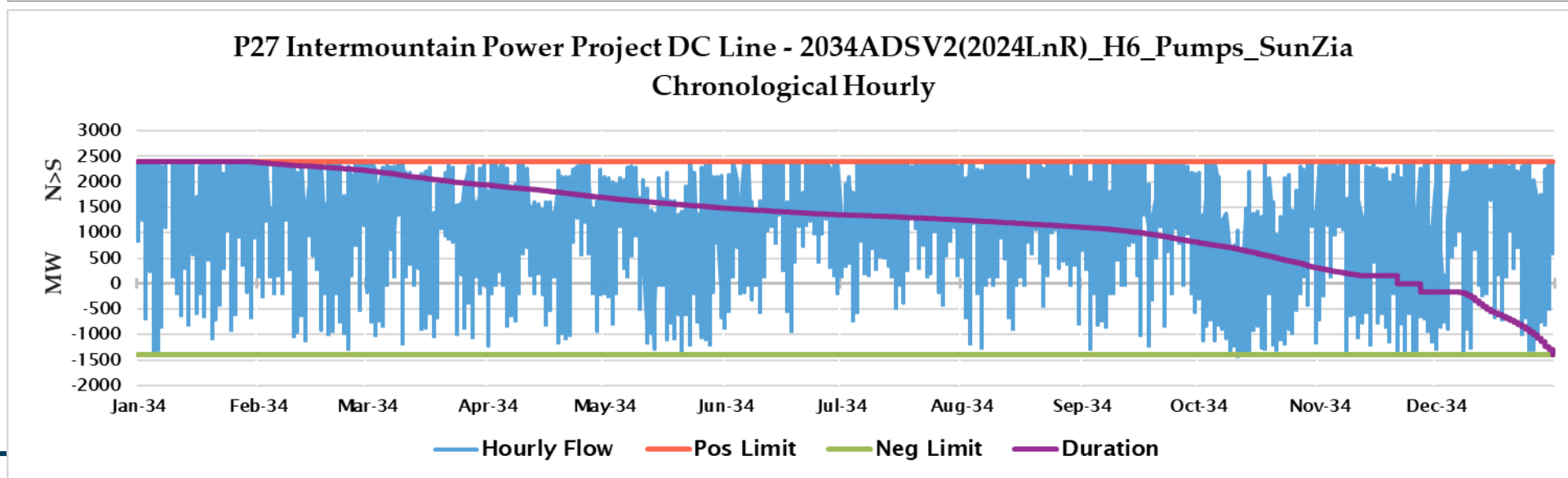
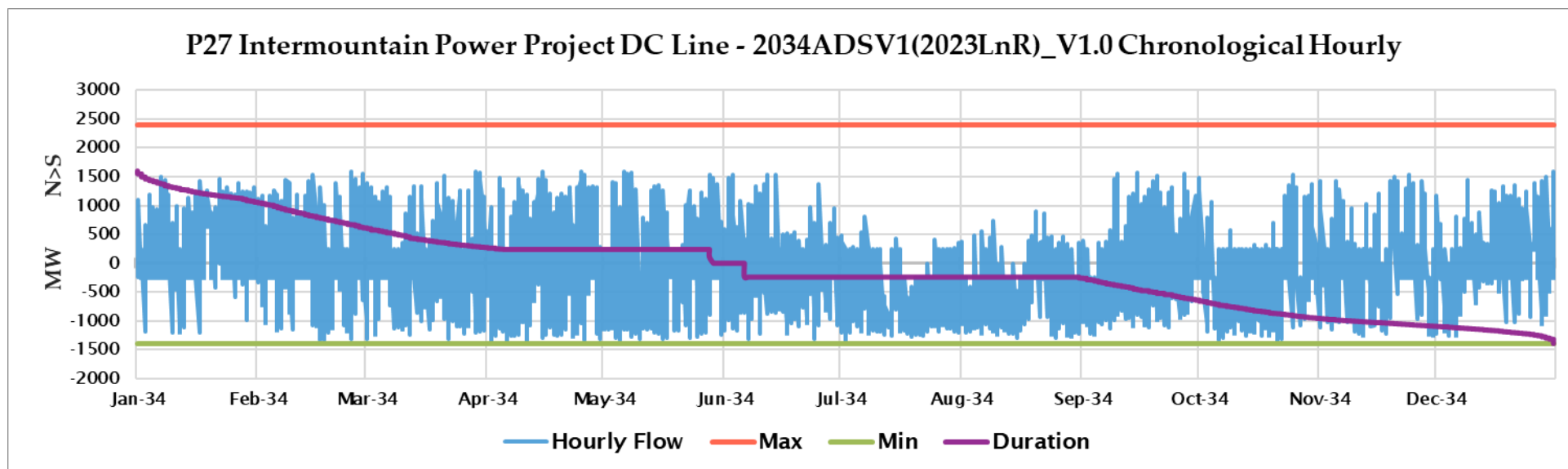
Congestion Cost (k\$)



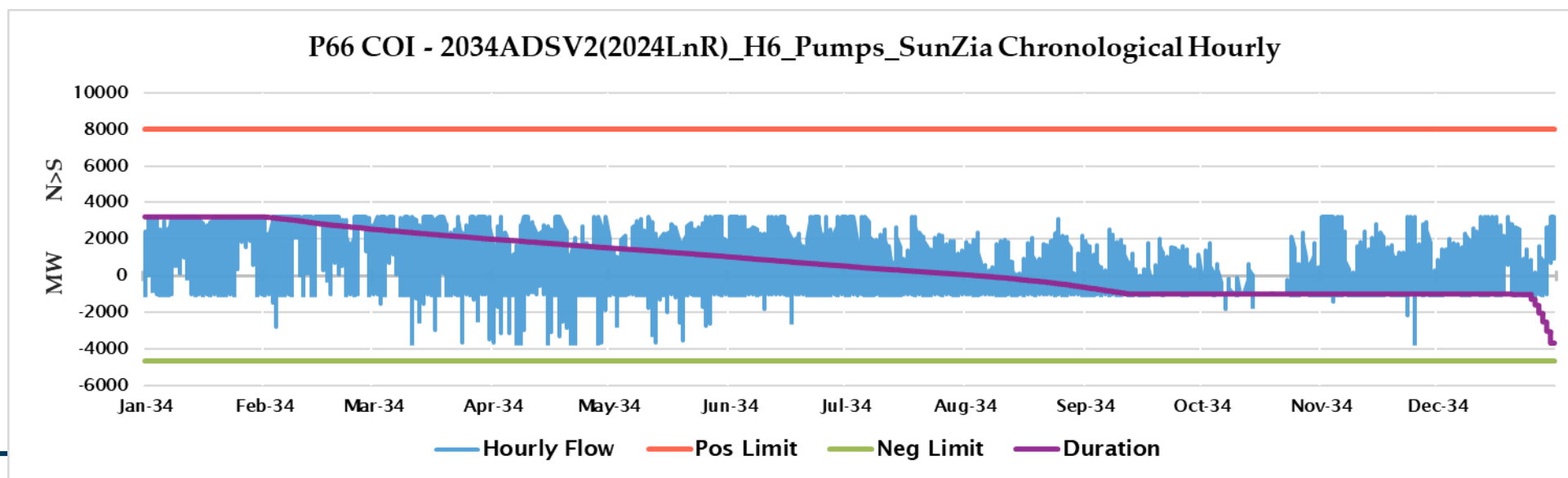
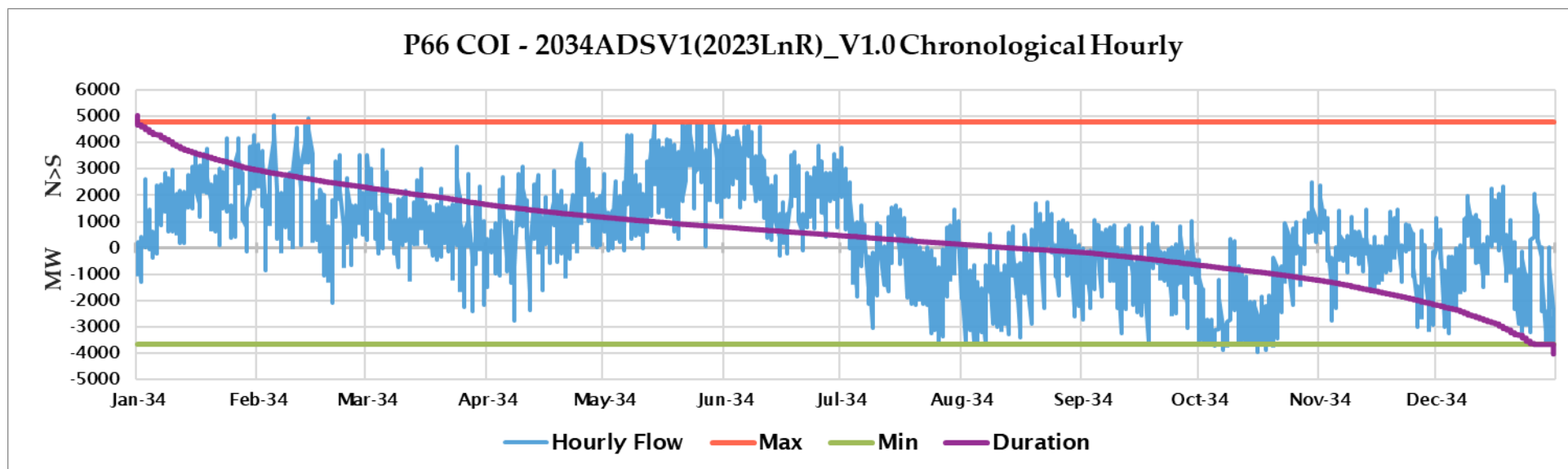
Congestion Hours (Hrs)



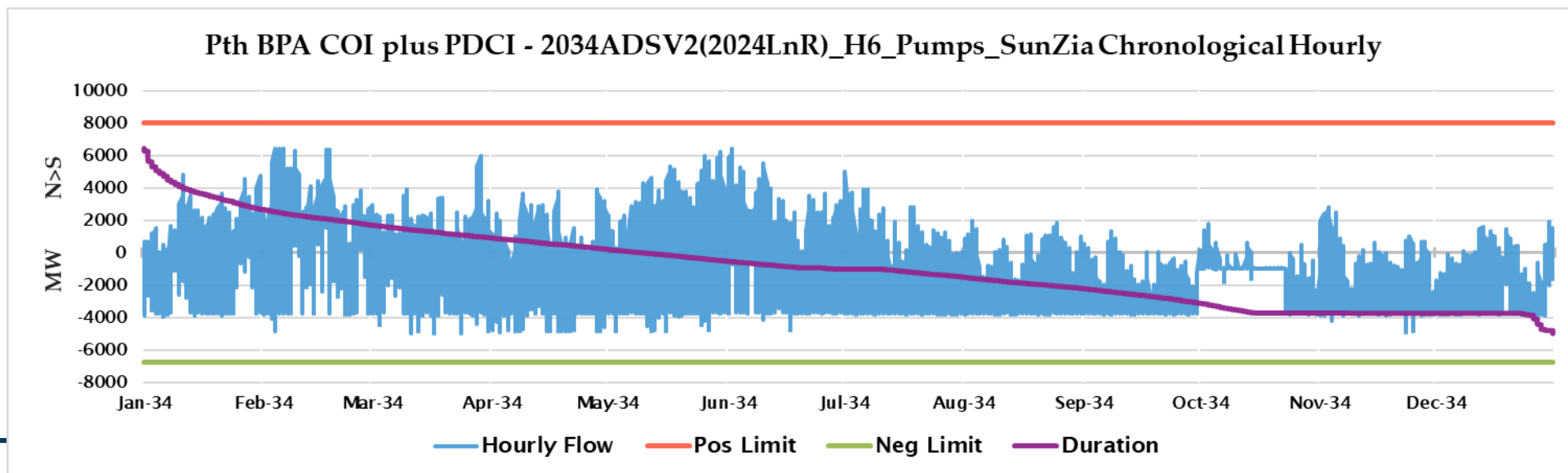
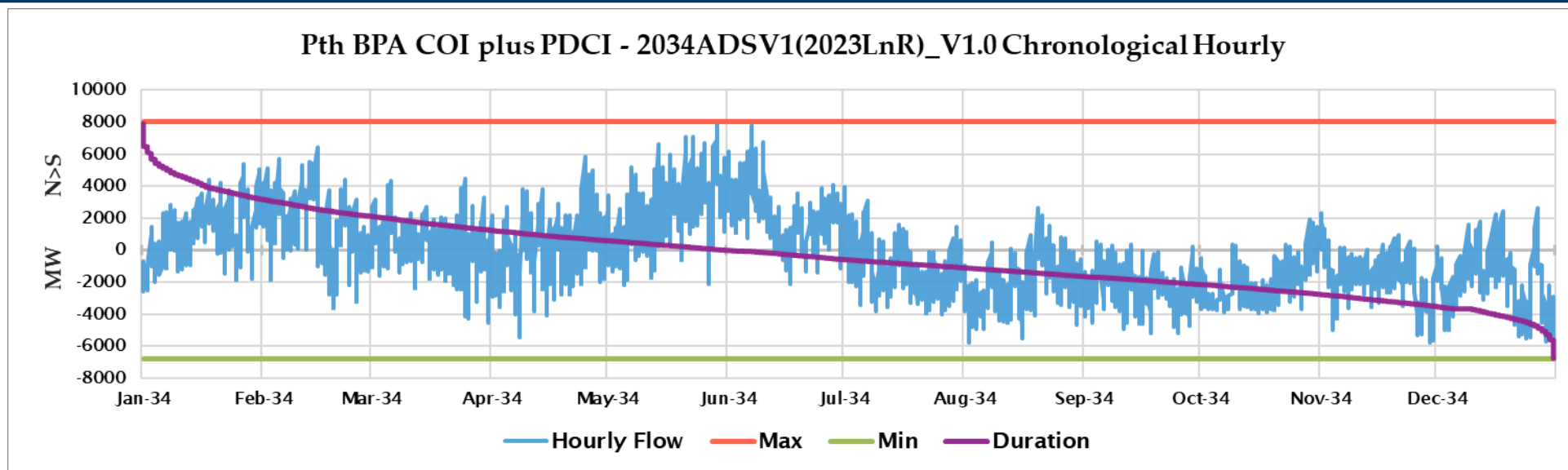
Path 27



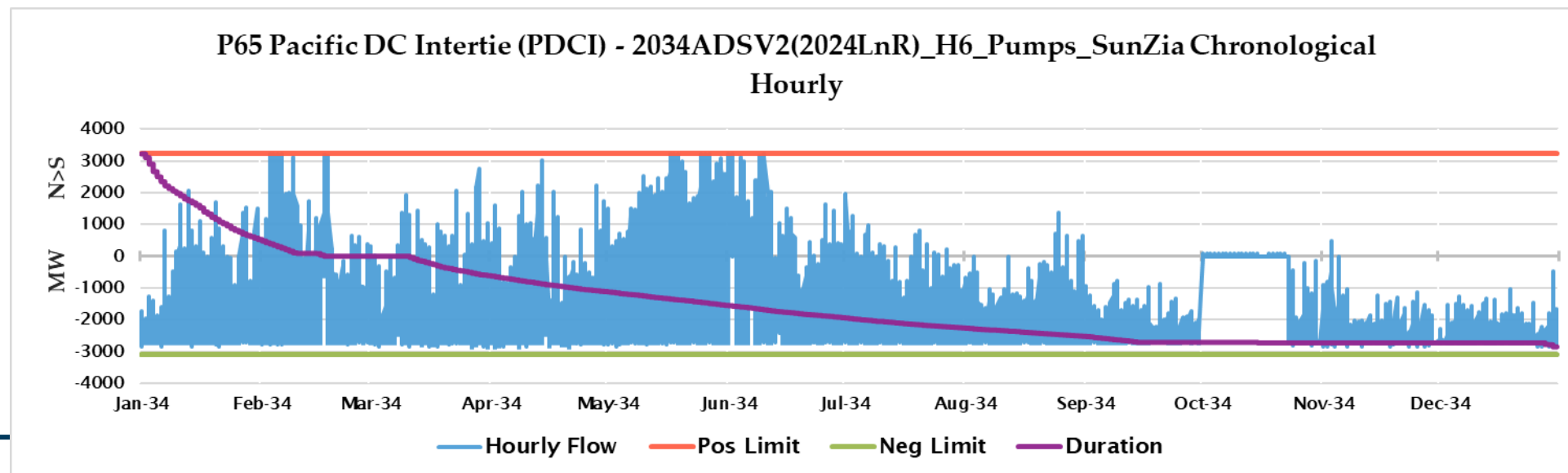
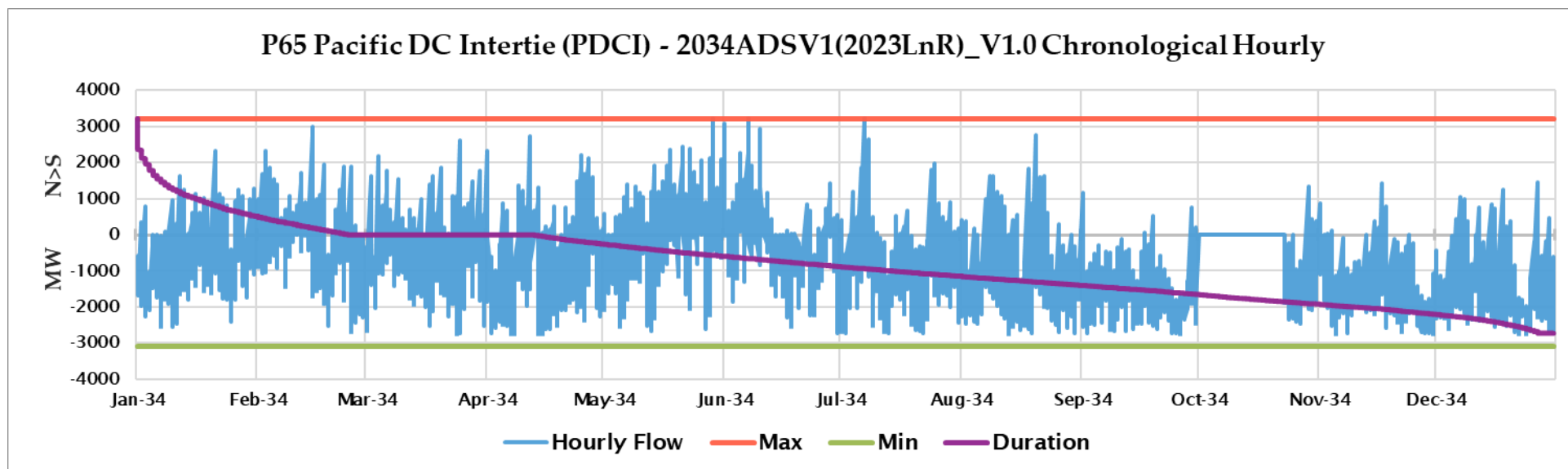
Path 66



COI+PDCI



Path 65





Electric Reliability and Security for the West

www.wecc.org