



PCDS Meeting

July 10, 2024

Jon Jensen and Anuj Patil

WECC

2034 ADS V2 Draft Run VH5_SunZia

- GV 10.3.62
- No MIO or Lookahead
- Distributed into 6 runs
- About 5 hours runtime

Changes from H3 to H5_SunZia

- Yi's path updates to Path 15 (path definition) and Path 46 (N. Gila IV #2)
- Updated the DC Tie multipliers to 1
- Multiplier corrected for some pumps
- SunZia in case
 - Need to fix wind, not reading shape correctly, wind results are not accurate

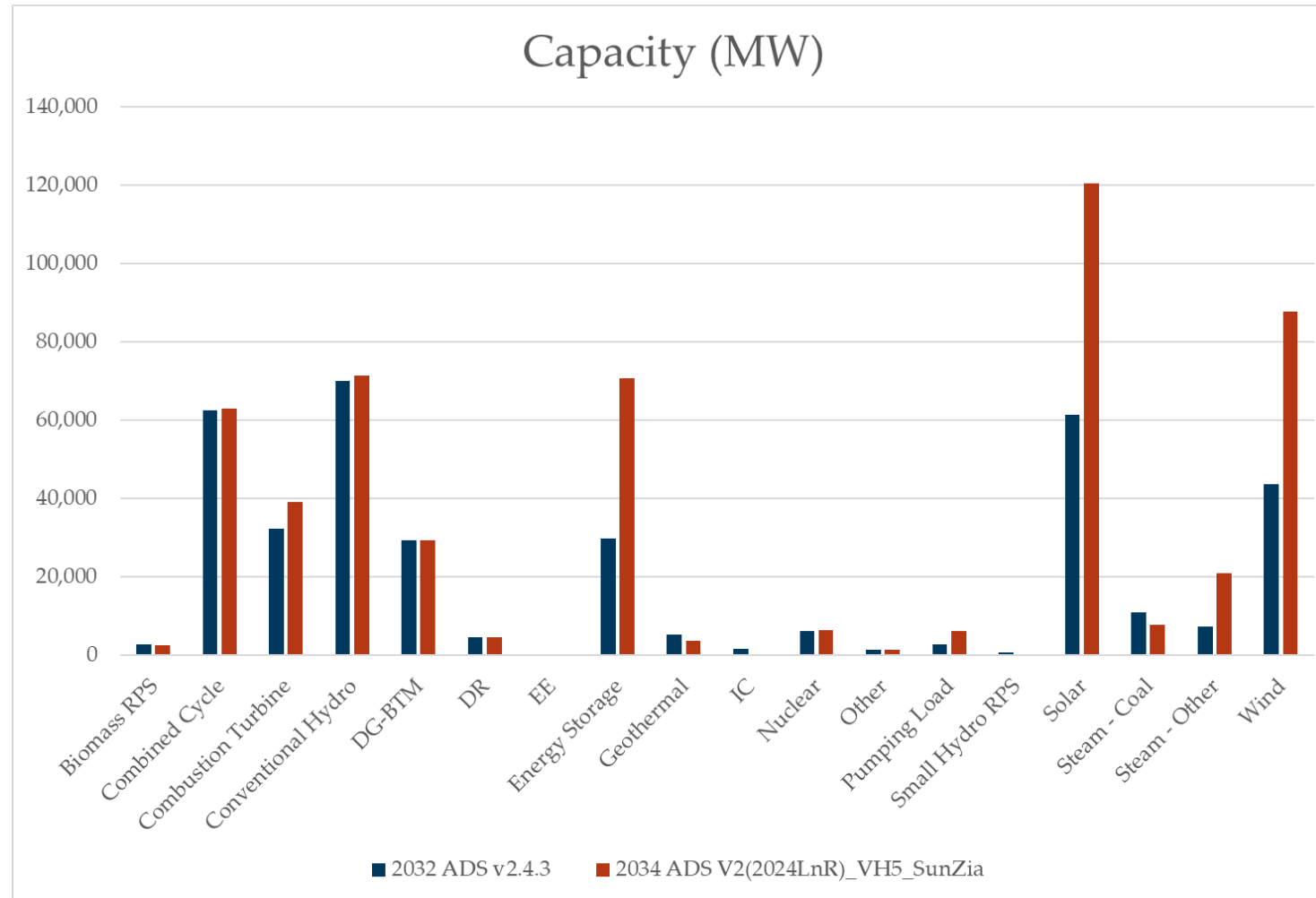
Still need to implement

- Received new hydro from PNNL Monthly/Weekly
 - Cleaned up version from last time
- Check generation mapped to ADS power flow
- Some generation mapped to wrong bus
- Check DC Tie – Currently modeled as load and generator
 - Model as generator, check busses for these loads

Colstrip

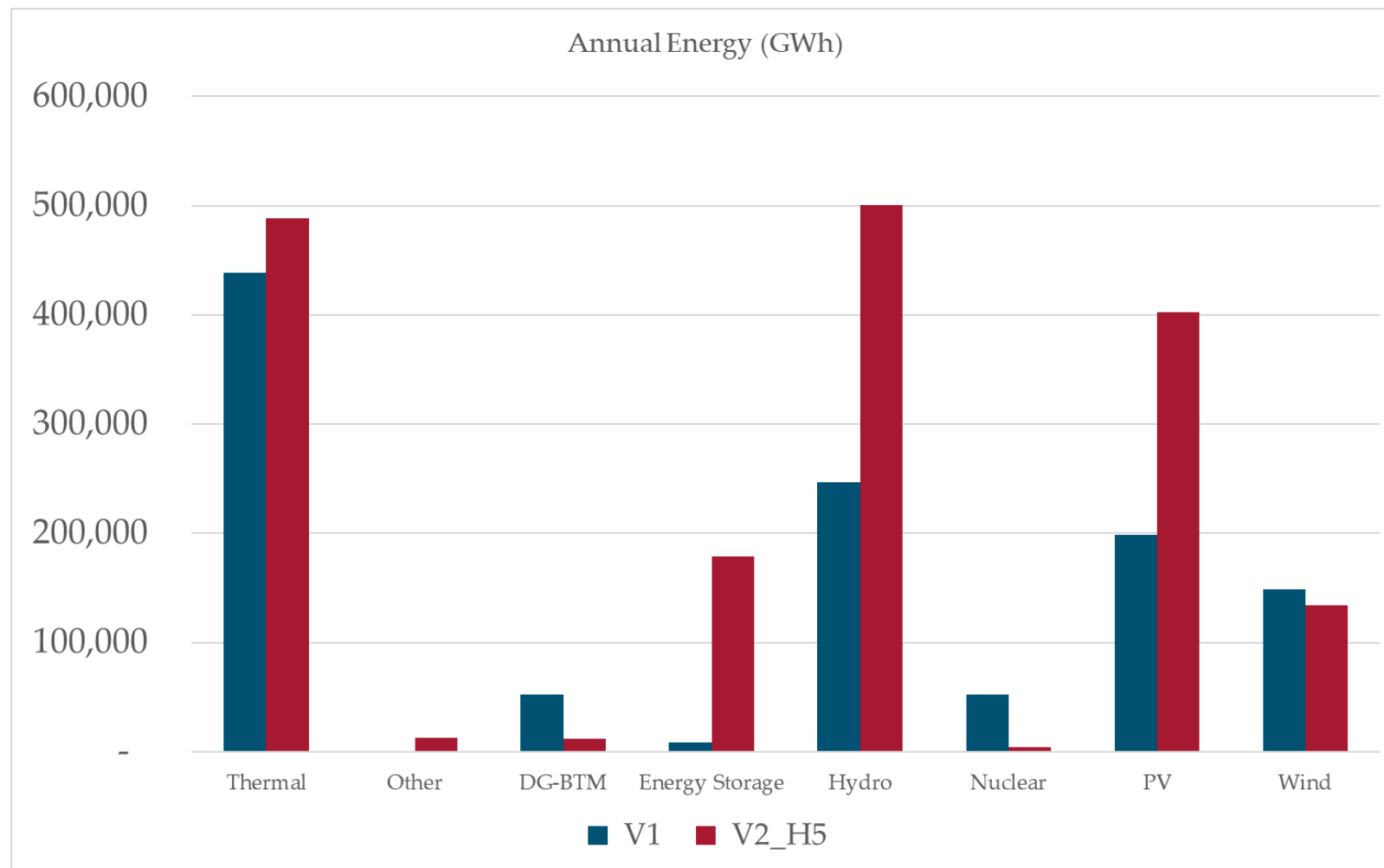
- 2024L&R
 - Colstrip 3 and 4
 - NWMT(Talen) 30%, PSEI 25%, PGE 20%, AVA 15, PAC 10%
 - PSEI showed retire 12/30/2025, others left retirement blank
- EIA 860 didn't say
- Colstrip Articles
 - NWMT/Talen 30% - No plans to retire
 - PSE 25%, PGE 20%, AVA 15, PAC 10%

Capacity

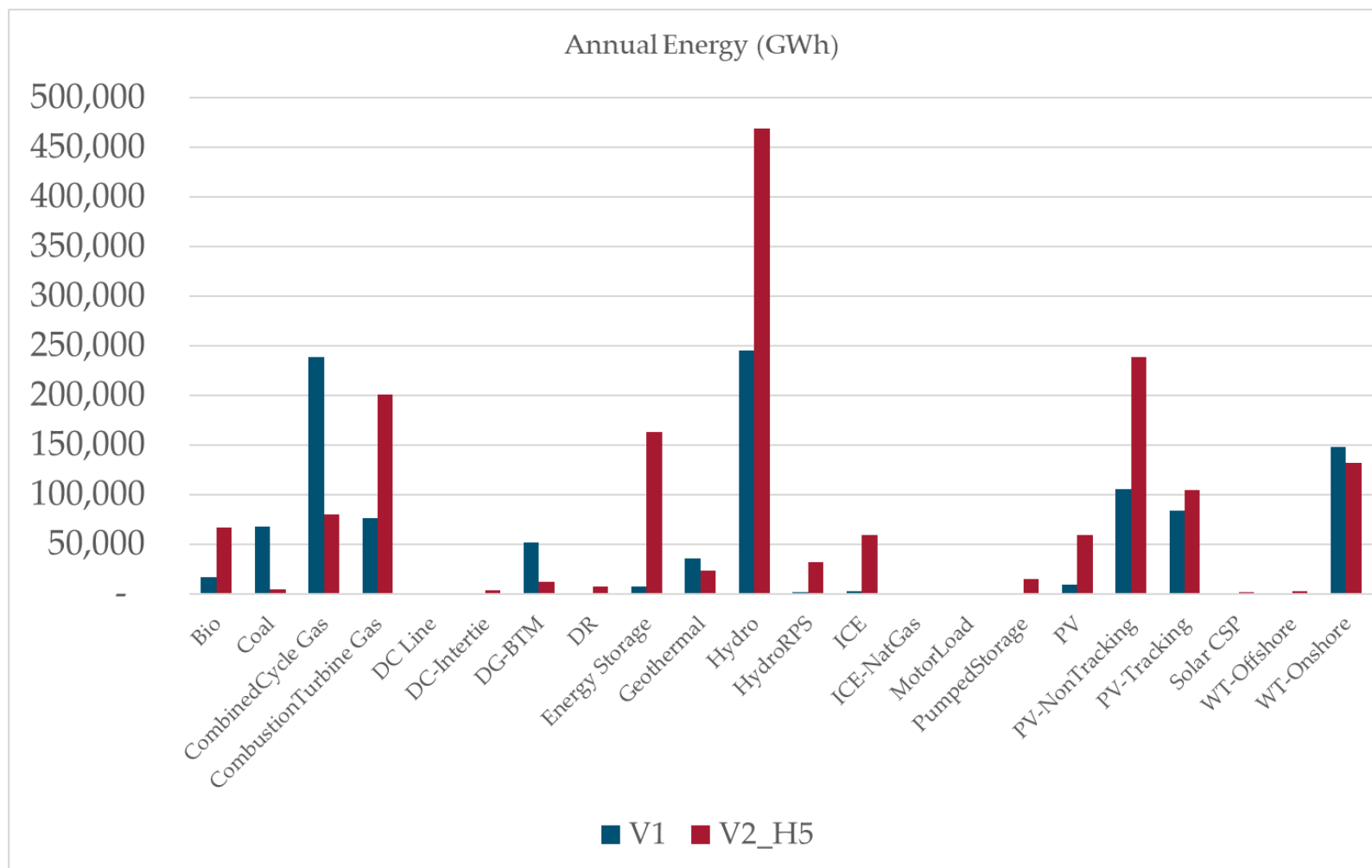


Annual Energy

- 0MWh Unserved load
- Wind from SunZia needs to be fixed, not accurate in chart
- Pumping is part of Energy Storage—need to break out, some is negative
- Some Nuclear defined as Thermal for V2



Annual Energy



Coal differences

- Coal units retired in V2, but were in V1
 - Sunnyside Cogeneration Associates 1 ST
 - Coronado 1 ST
 - Coronado 2 ST
 - Springerville 4 ST
 - Comanche 3 ST
 - Springerville 3 SR
 - Cherokee 4 ST

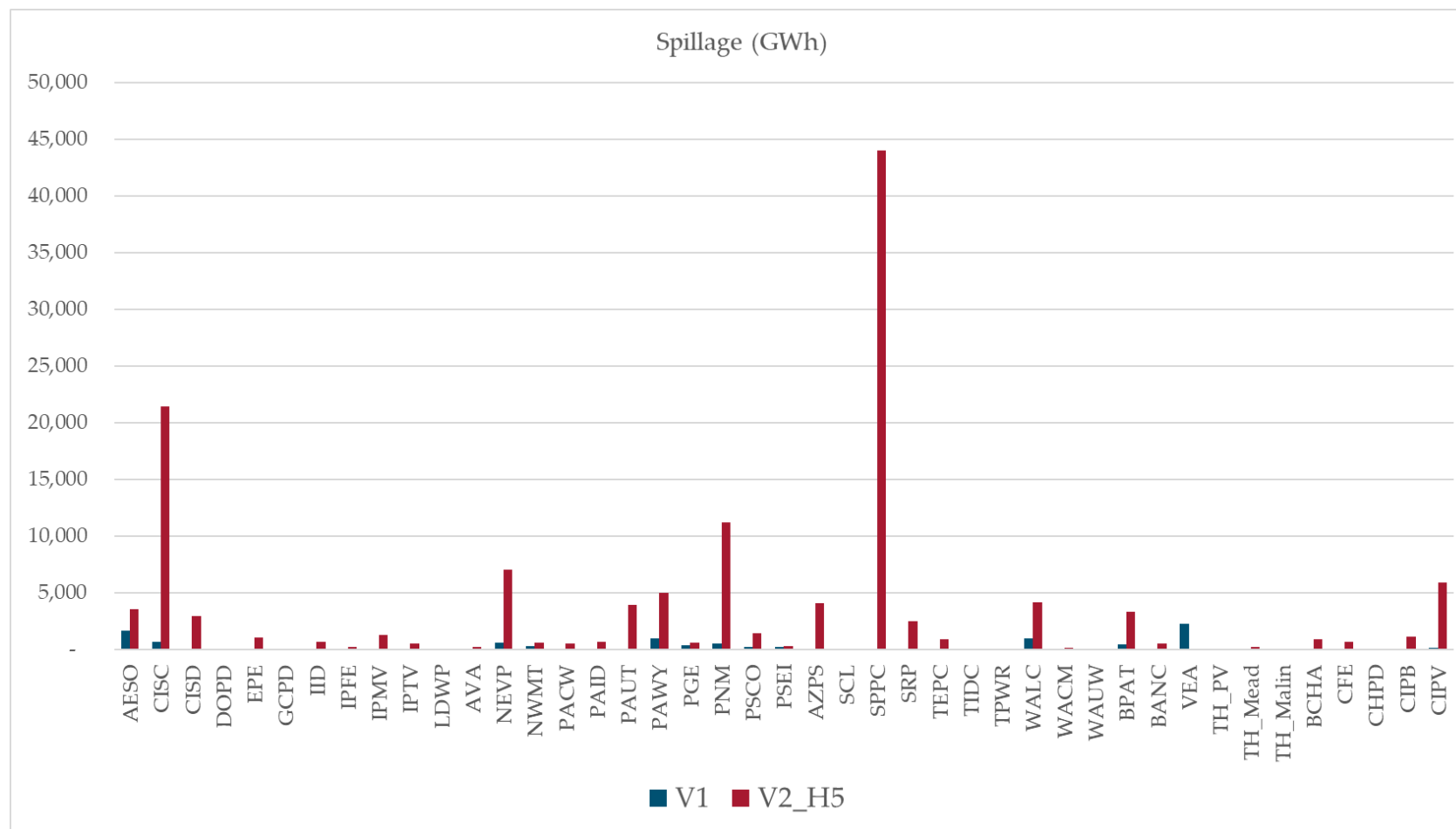
Coal retirements from H3 to H5_SunZia

Please add ' at the beginning of generator ID as a special indicator of text type.

Name	Commission Date	Retirement Date	DevSta	Area N	Region Name	PSSEMinCap(MW)	PSSEMaxCap(MW)
Sunnyside Cogeneration Associates 1	#1993-09-01#	#2037-12-01#	Existing	PAUT	BS_PACE	23.241	58.103
Coronado 1 ST	#1979-12-01#	#2050-12-31#	Existing	SRP	SW_SRP	138.182	380
Coronado 2 ST	#1980-10-01#	#2050-12-31#	Existing	SRP	SW_SRP	170	382
Springerville 4 ST	#2009-12-17#	#2050-12-31#	Existing	TEPC	SW_TEPC	264.091	415
Comanche 3 ST	#2010-05-01#	#2069-12-31#	Existing	PSCO	RM_PSCO	466.261	766
Springerville 3 SR	#2006-07-28#	#2036-09-30#	Existing	TEPC	SW_TEPC	271.753	417
Cherokee 4 ST	#2017-08-13#	#2034-12-31#	Existing	PSCO	RM_PSCO	215	383

Spillage

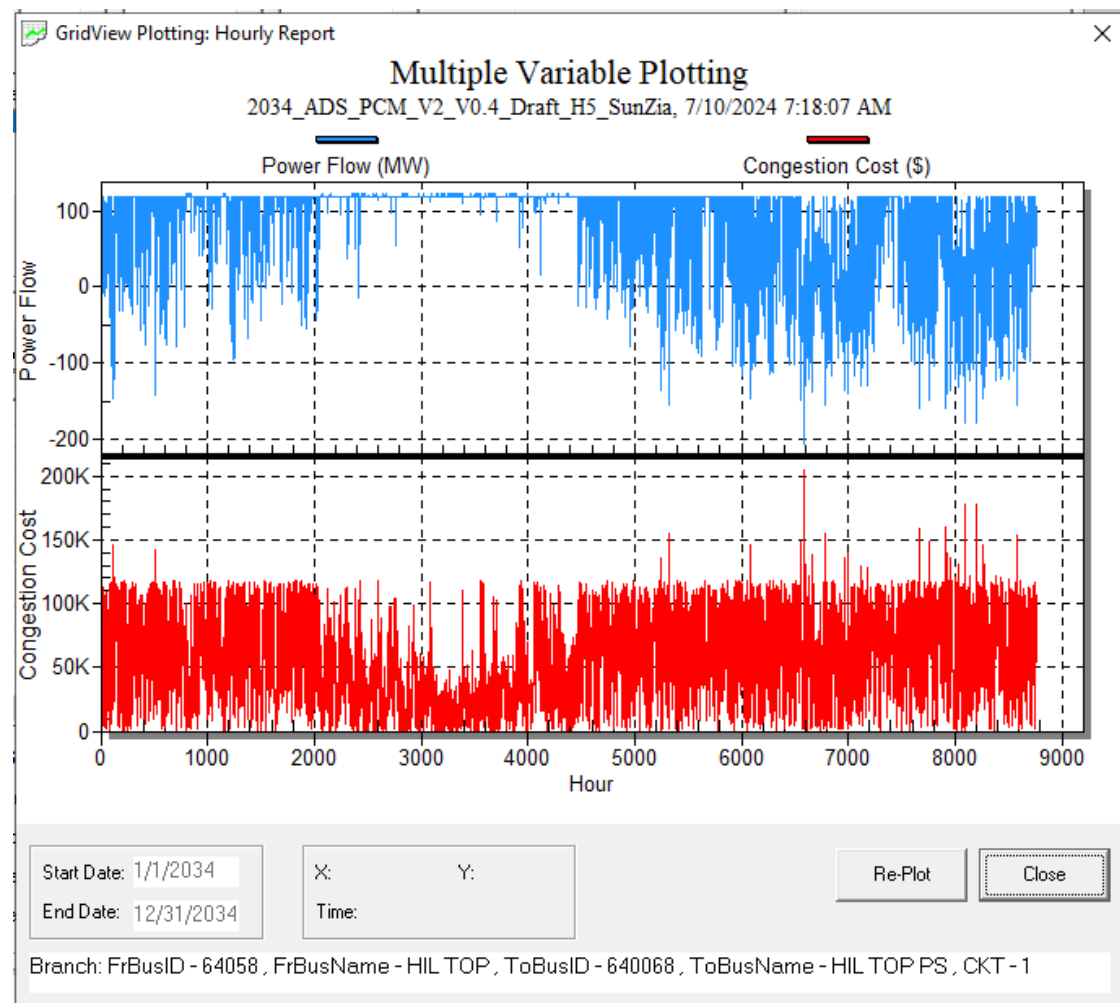
- V1=10,031 GWh
- V2=132,195 GWh



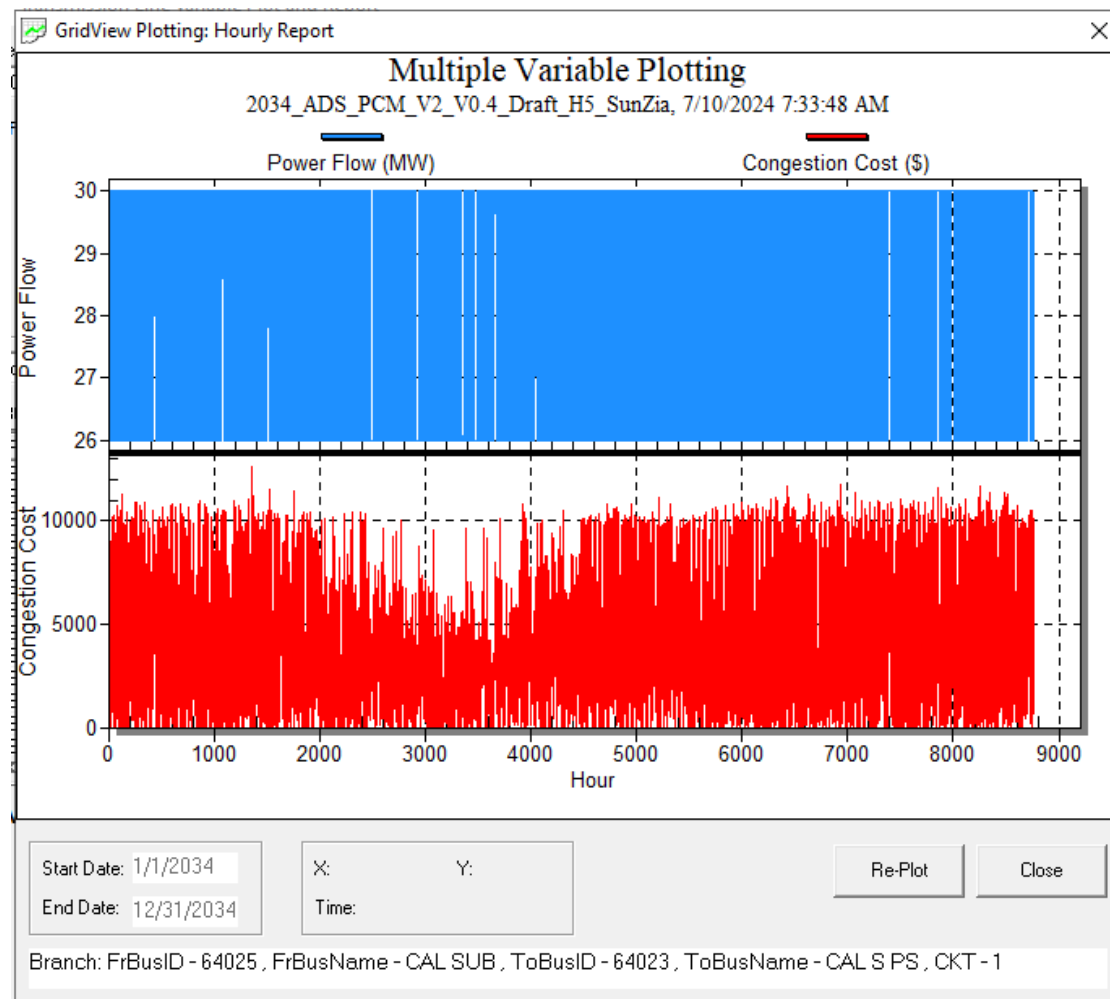
Most congested elements in SPPC

- 64058_640068_1 HIL TOP_HIL TOP PS_1
- 64025_64023_1 CAL SUB_CAL S PS_1

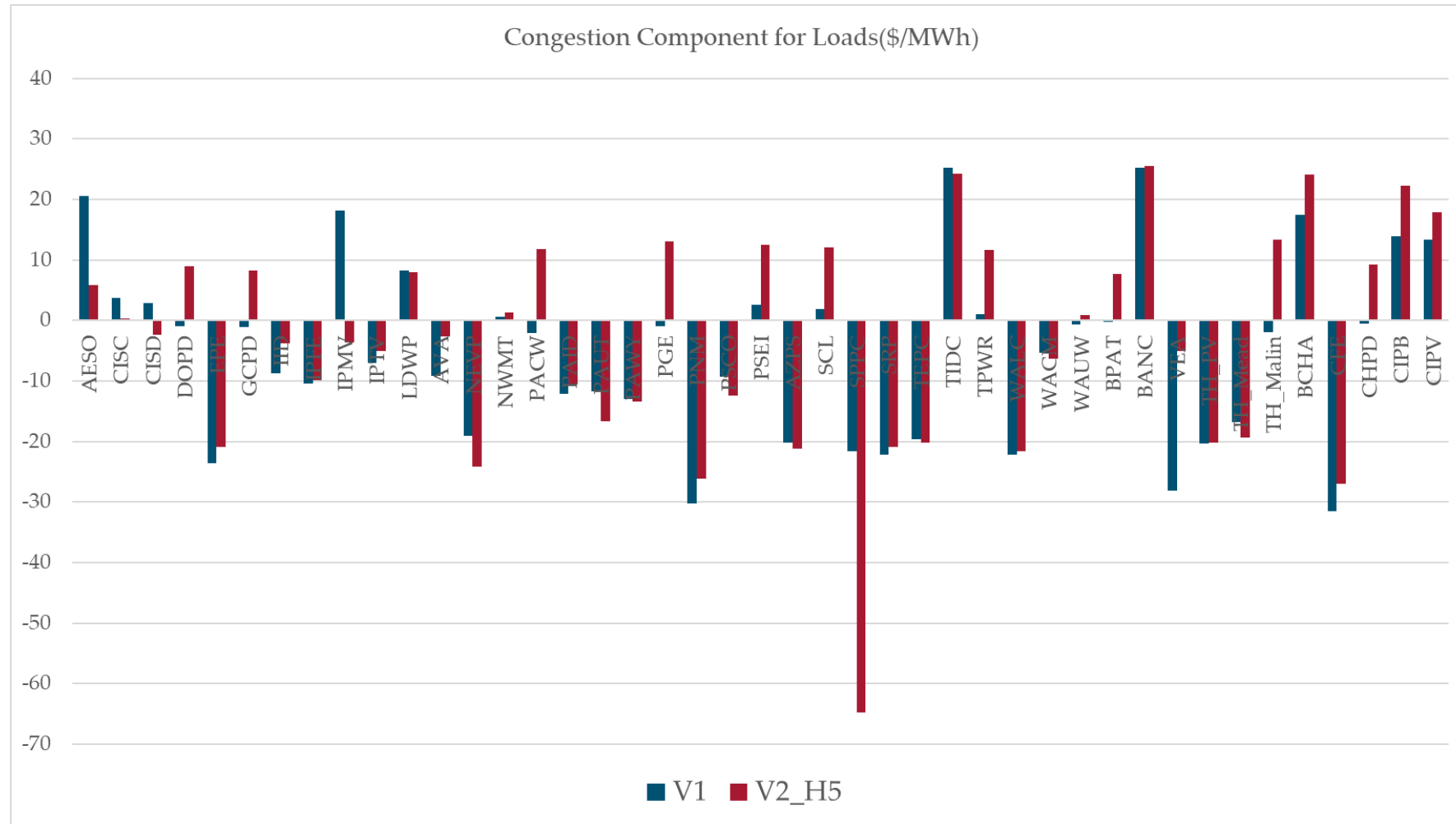
SPPC Congestion



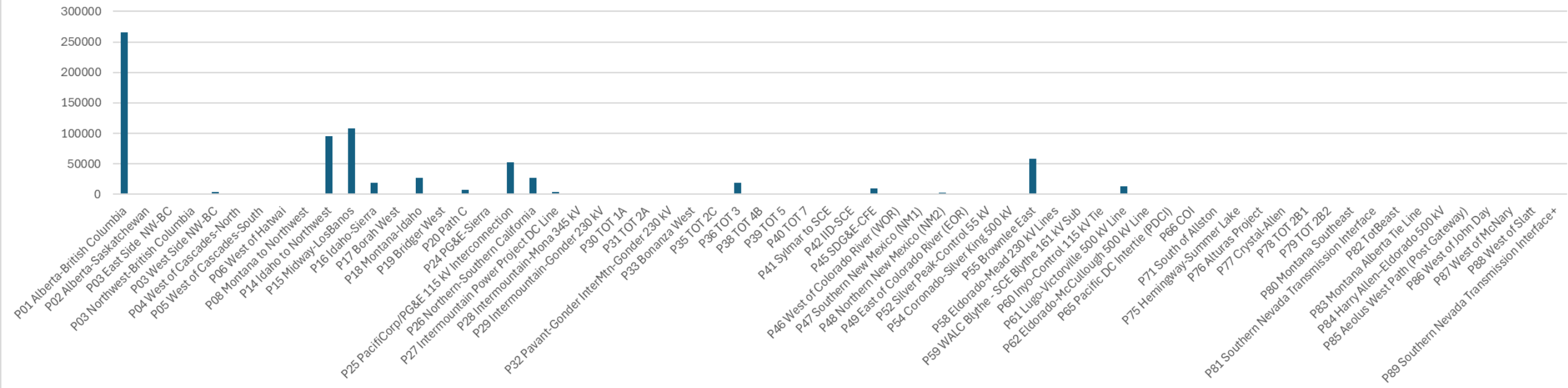
SPPC Congestion



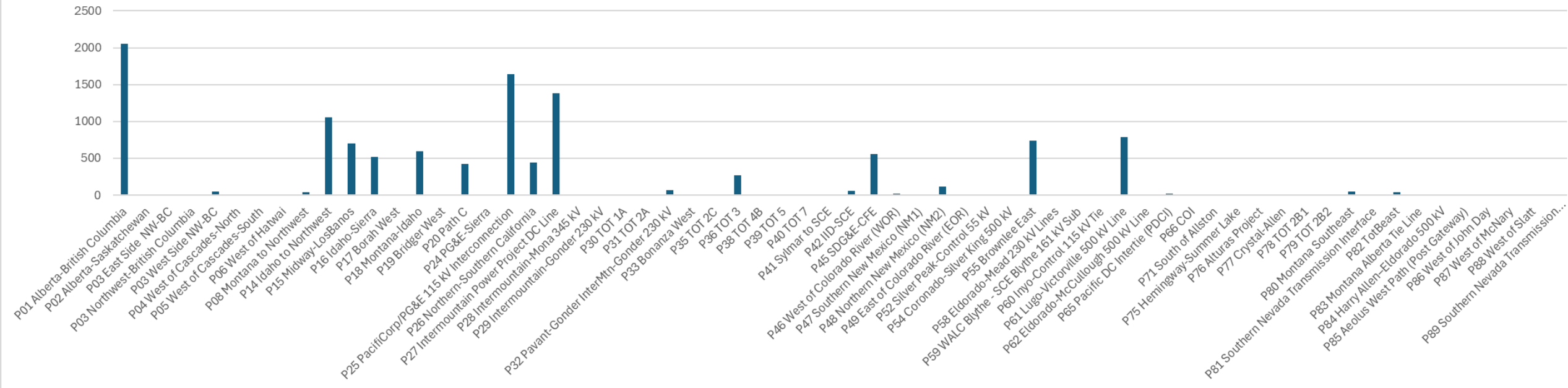
Congestion



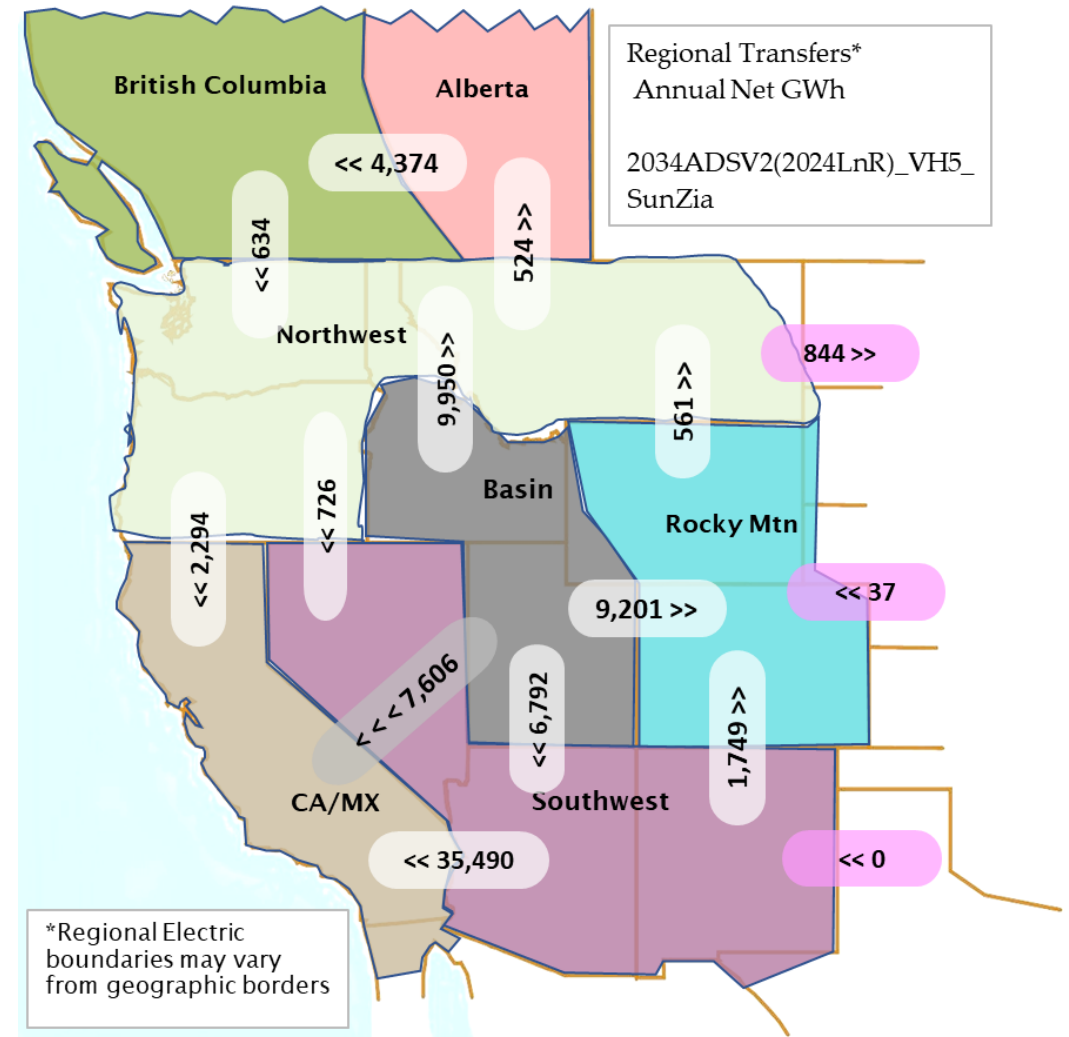
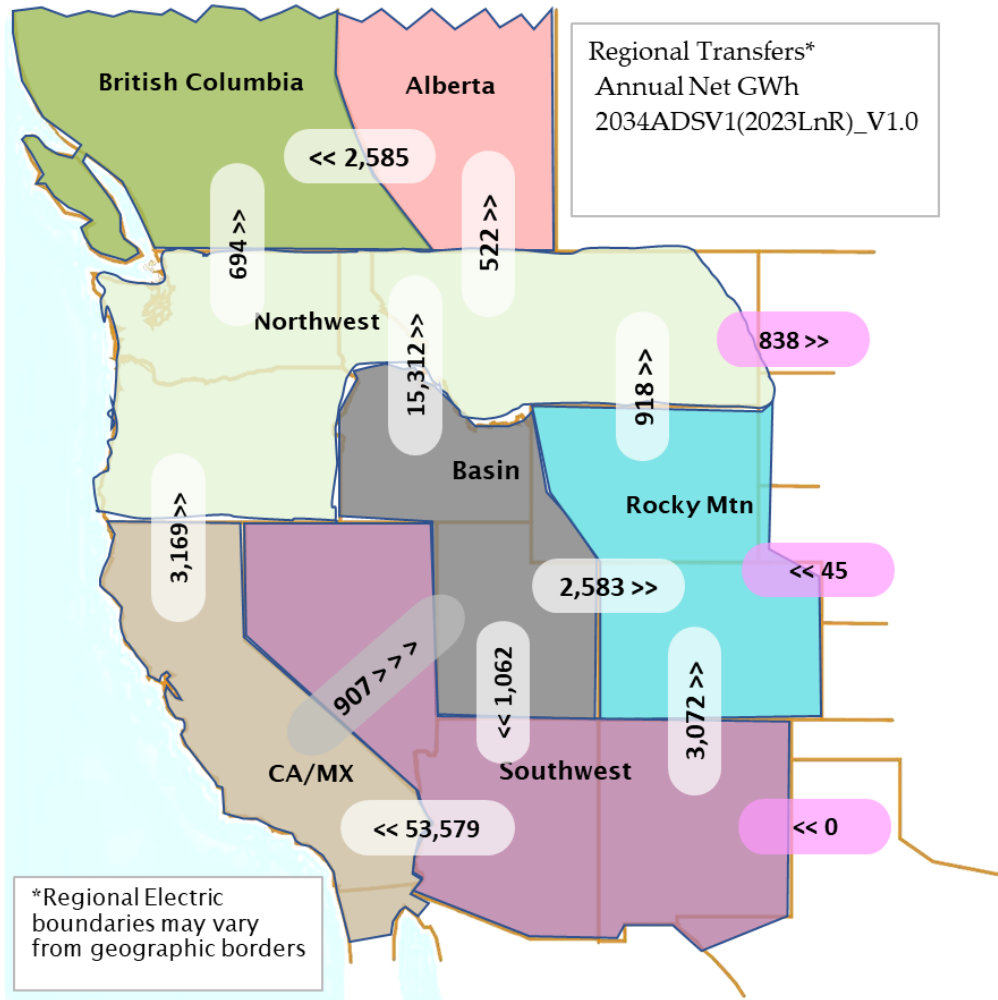
Congestion Cost (k\$)



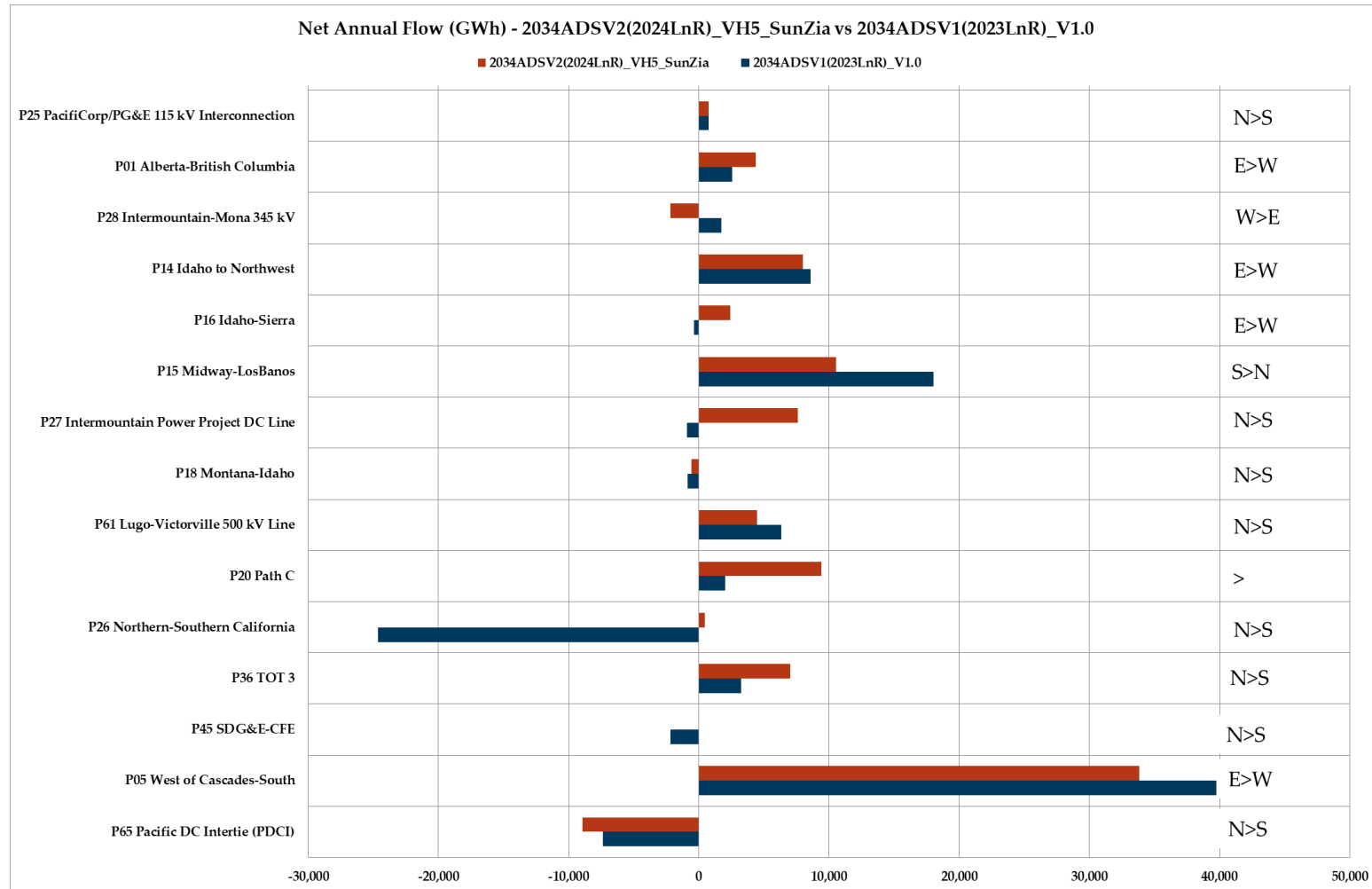
Congestion Hours (Hrs)



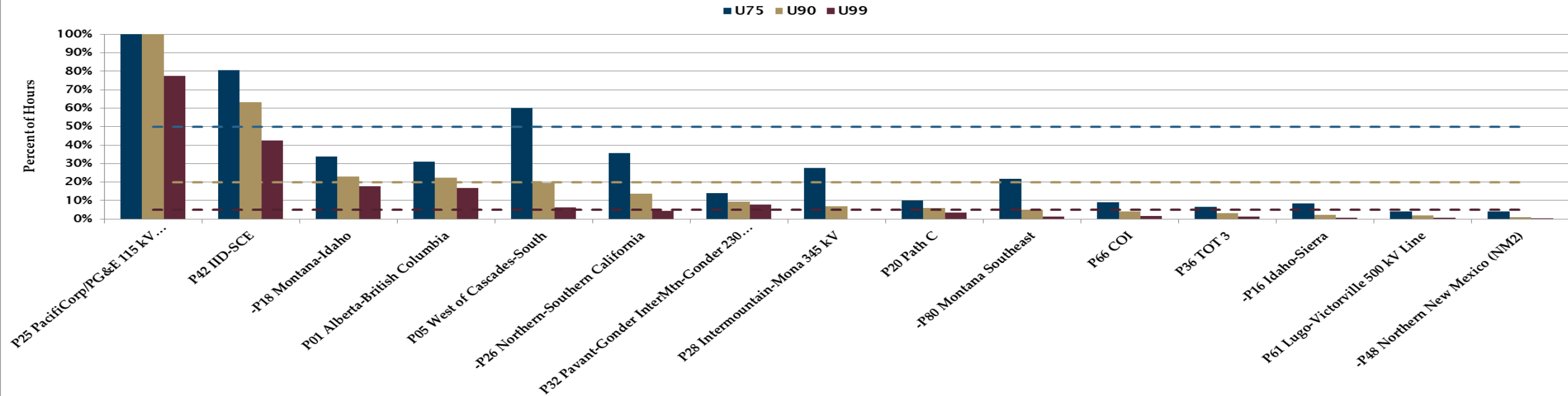
Regional Net Transfers



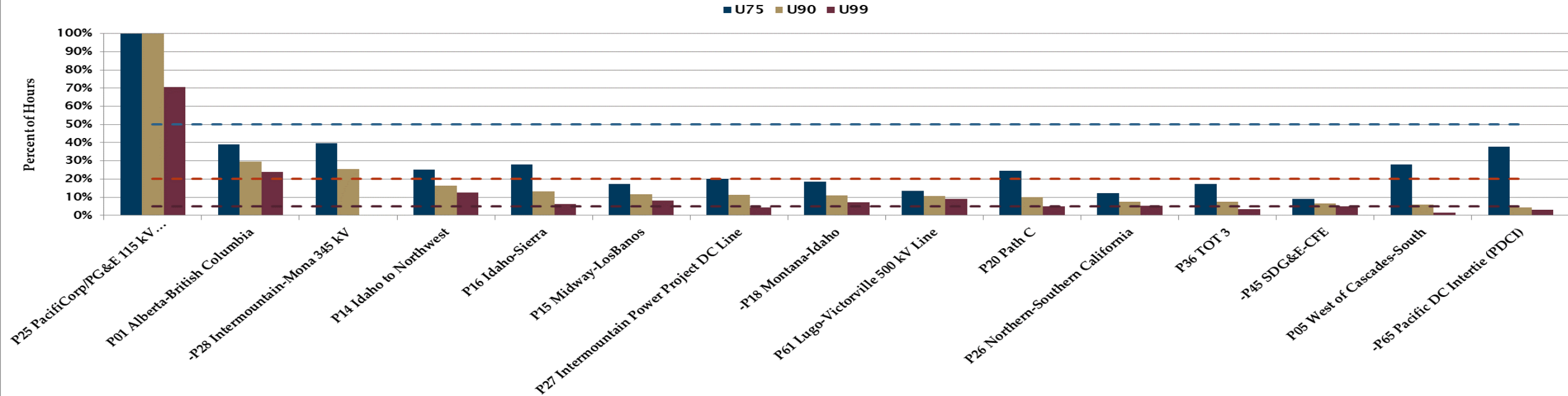
Net Annual Flow



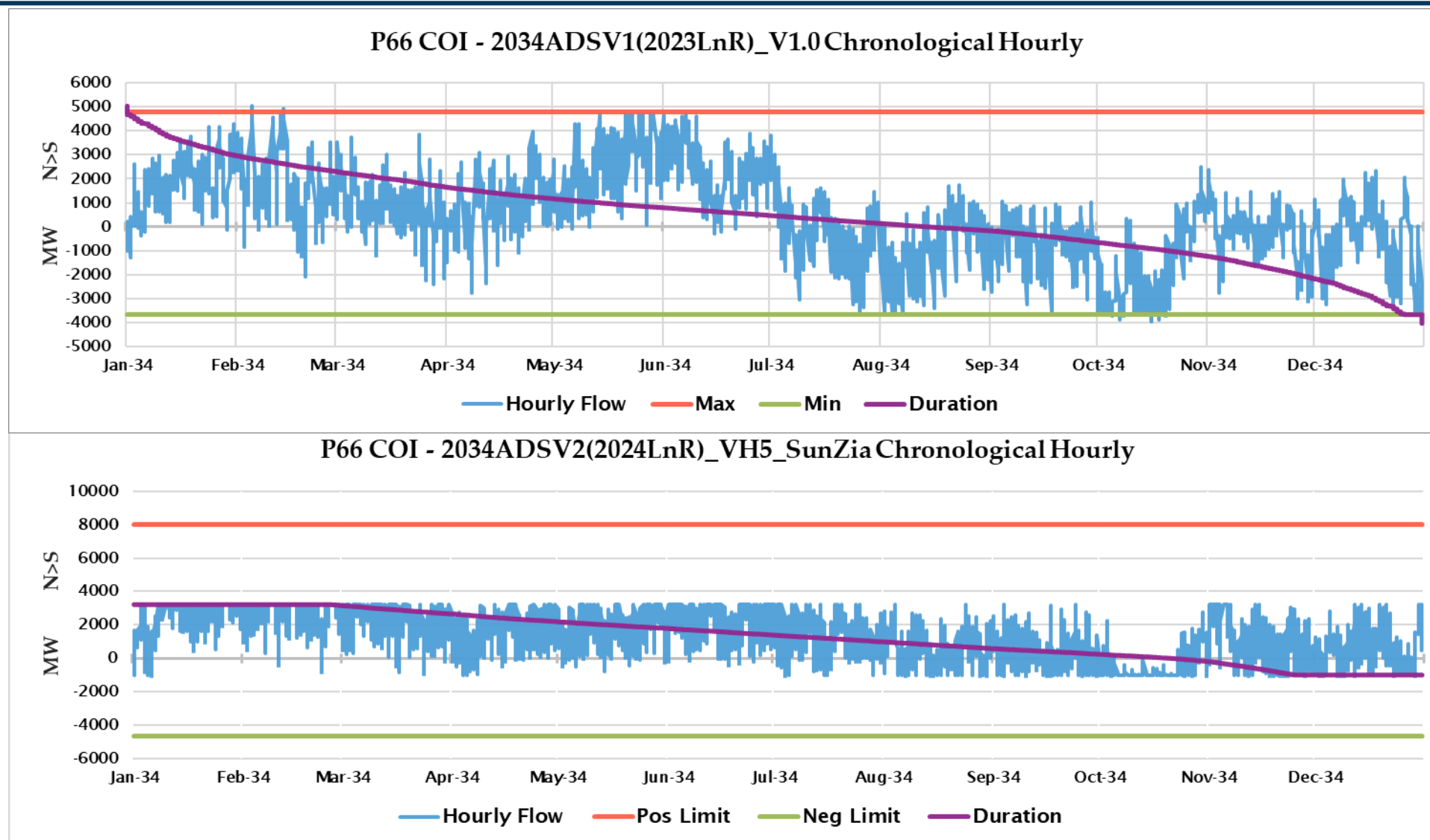
Most Heavily Utilized Paths - 2034ADSV1(2023LnR)_V1.0



Most Heavily Utilized Paths - 2034ADSV2(2024LnR)_VH5_SunZia

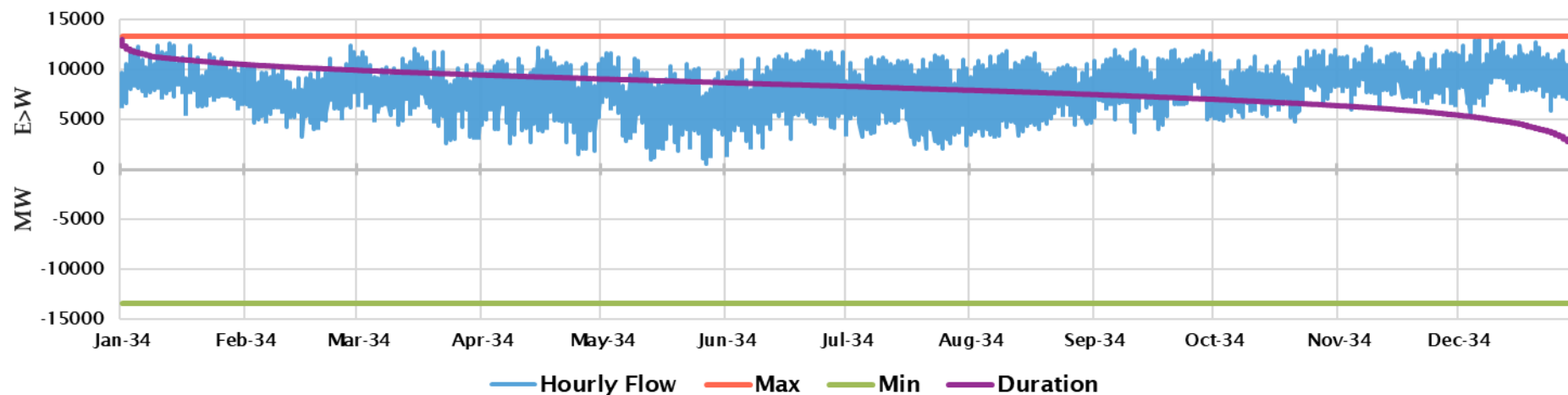


Path 66

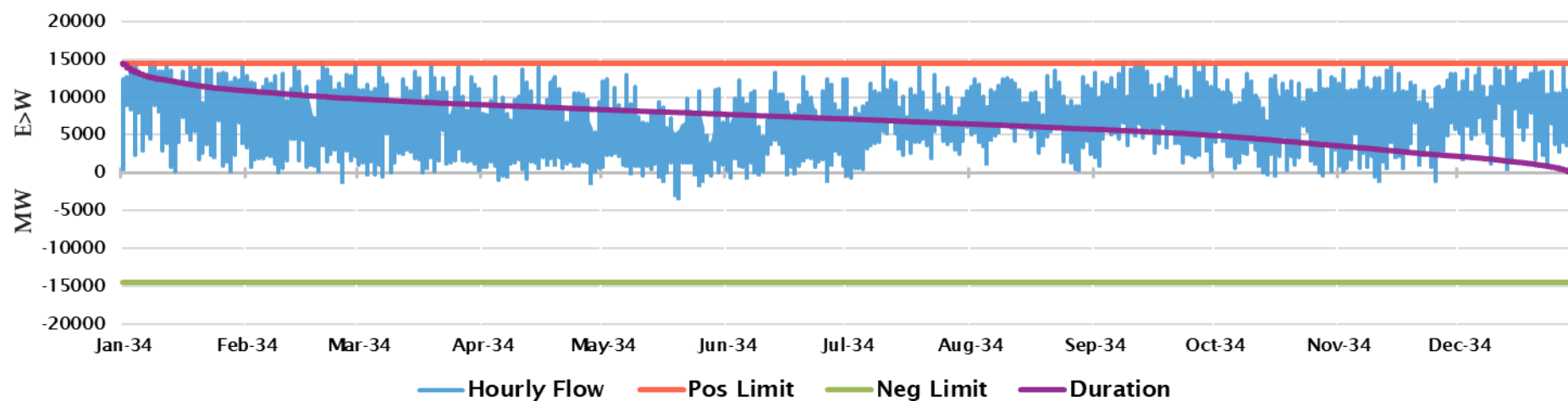


Path 46

P46 West of Colorado River (WOR) - 2034ADSV1(2023LnR)_V1.0 Chronological Hourly

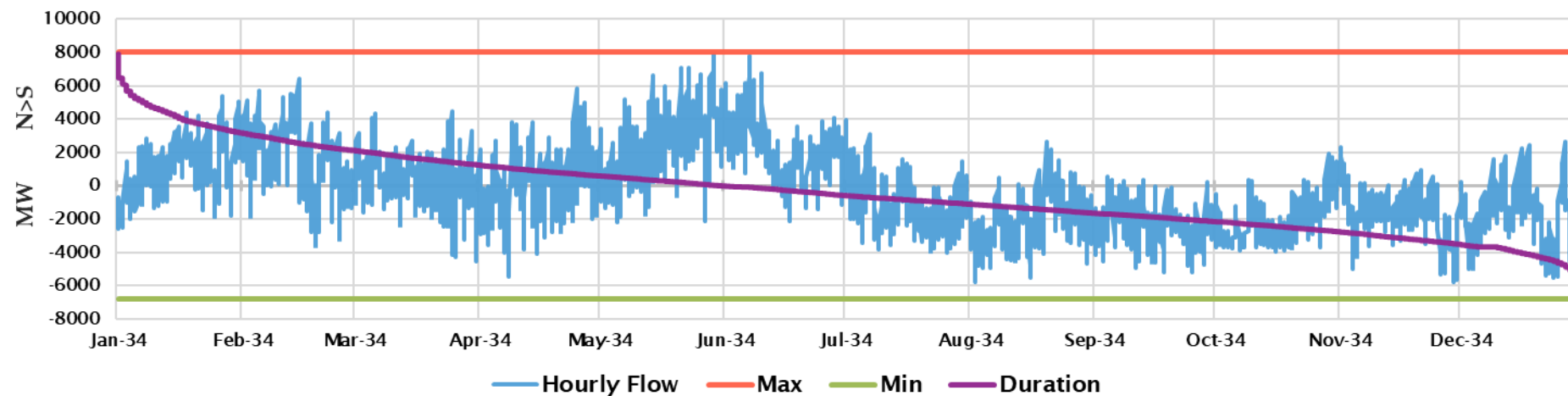


P46 West of Colorado River (WOR) - 2034ADSV2(2024LnR)_VH5_SunZia Chronological Hourly

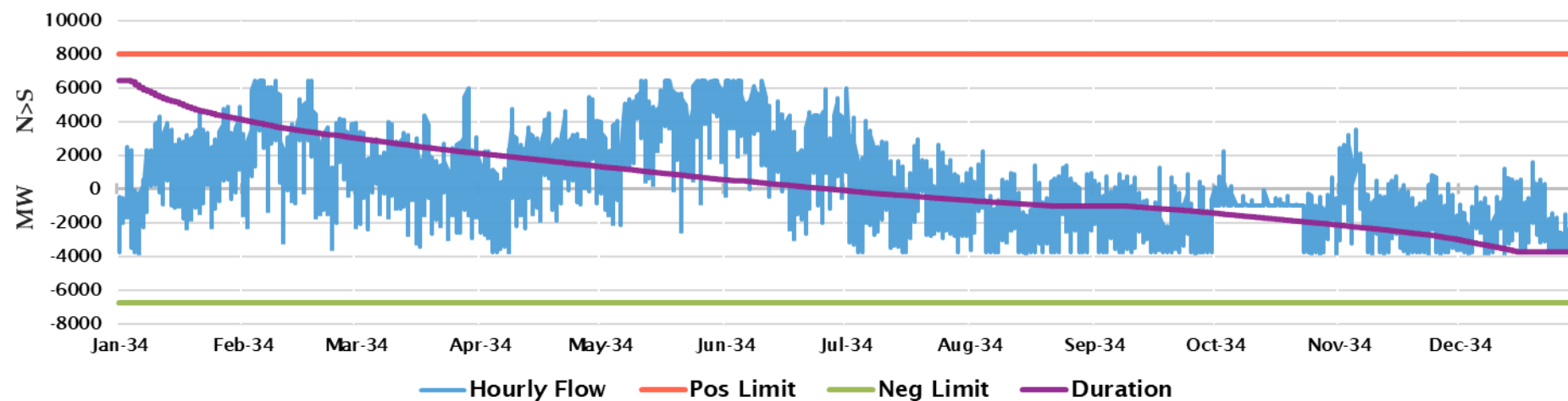


COI+PDCI

Pth BPA COI plus PDCI - 2034ADSV1(2023LnR)_V1.0 Chronological Hourly

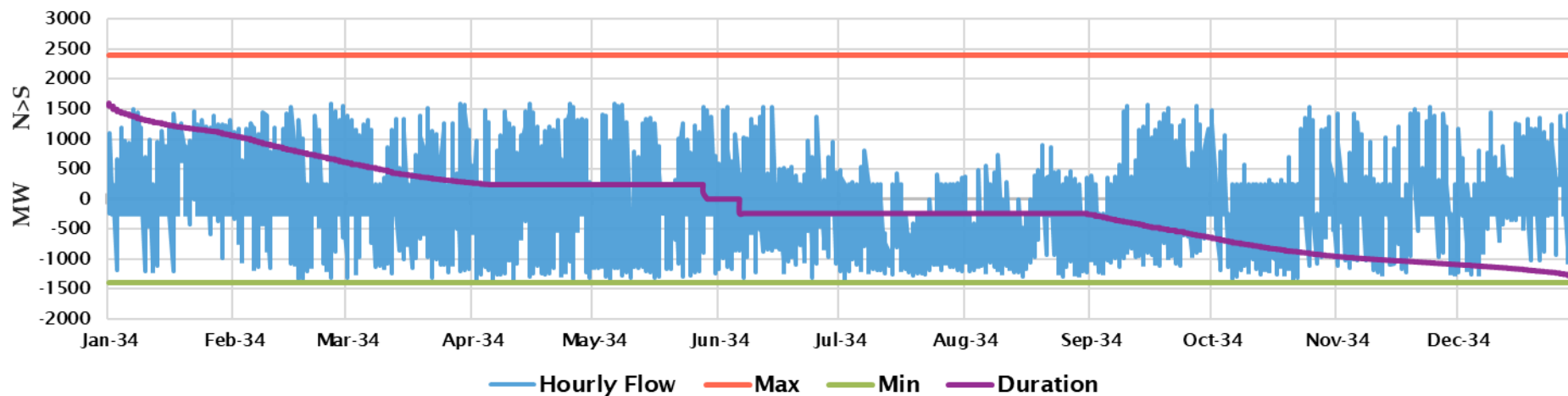


Pth BPA COI plus PDCI - 2034ADSV2(2024LnR)_VH5_SunZia Chronological Hourly

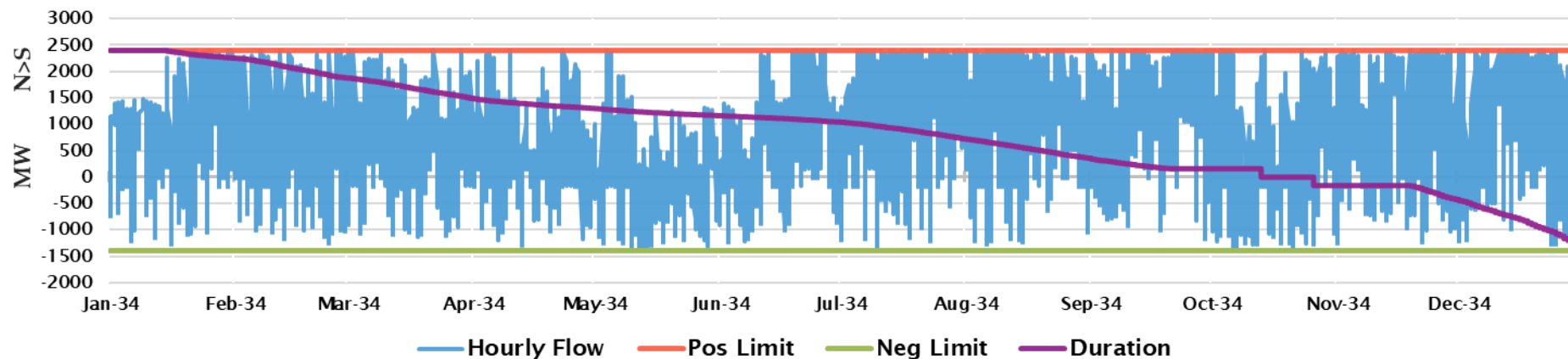


Path 27

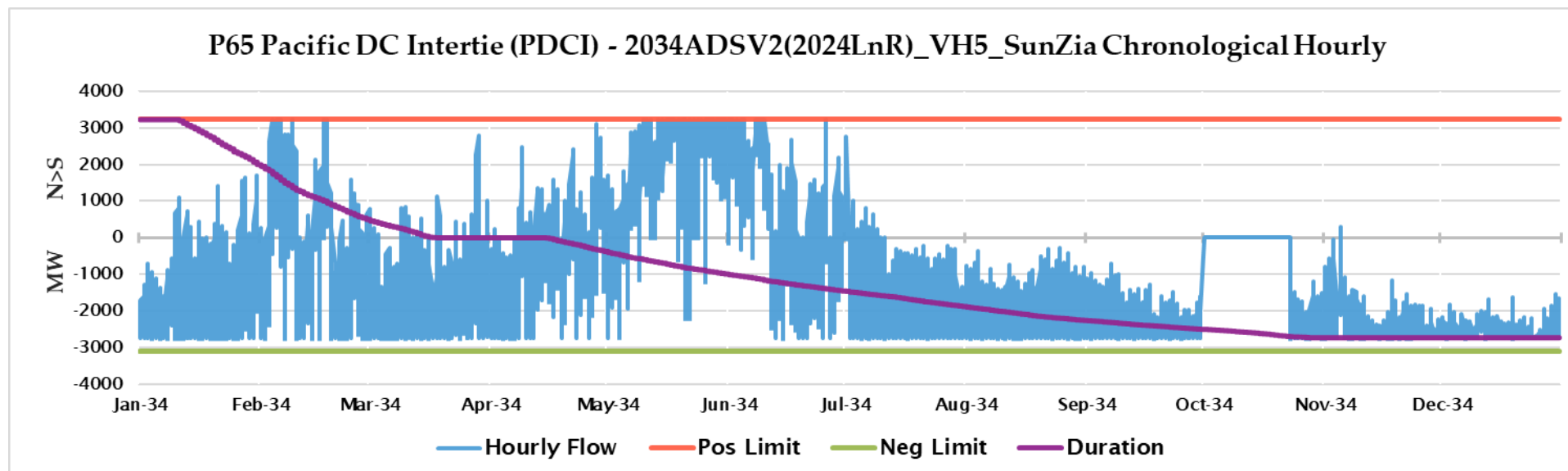
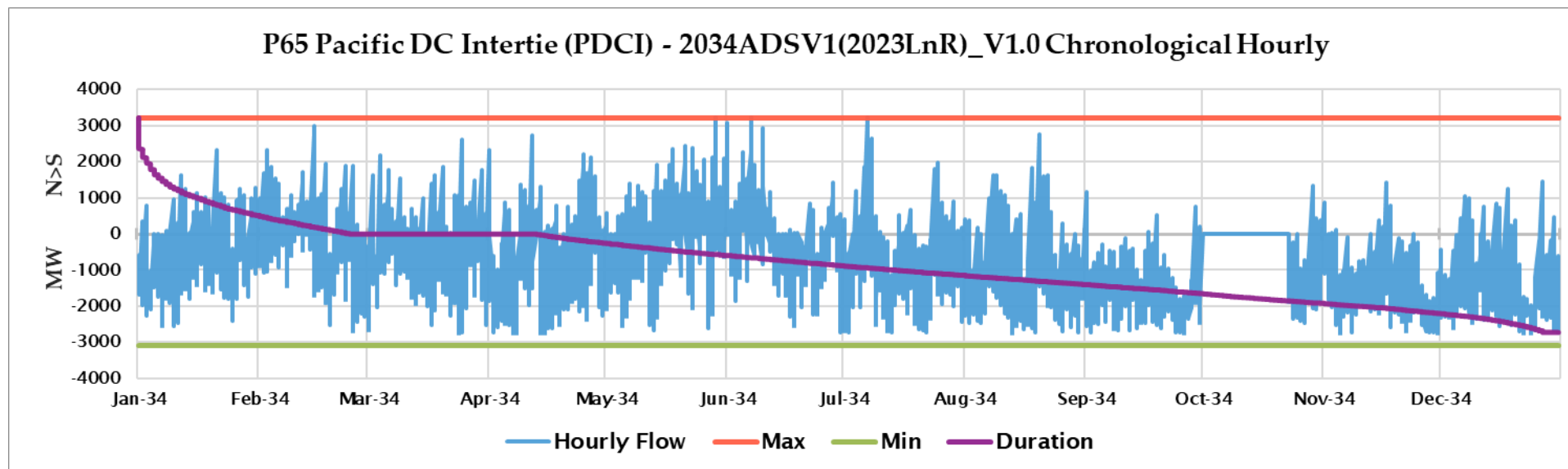
P27 Intermountain Power Project DC Line - 2034ADSV1(2023LnR)_V1.0 Chronological Hourly



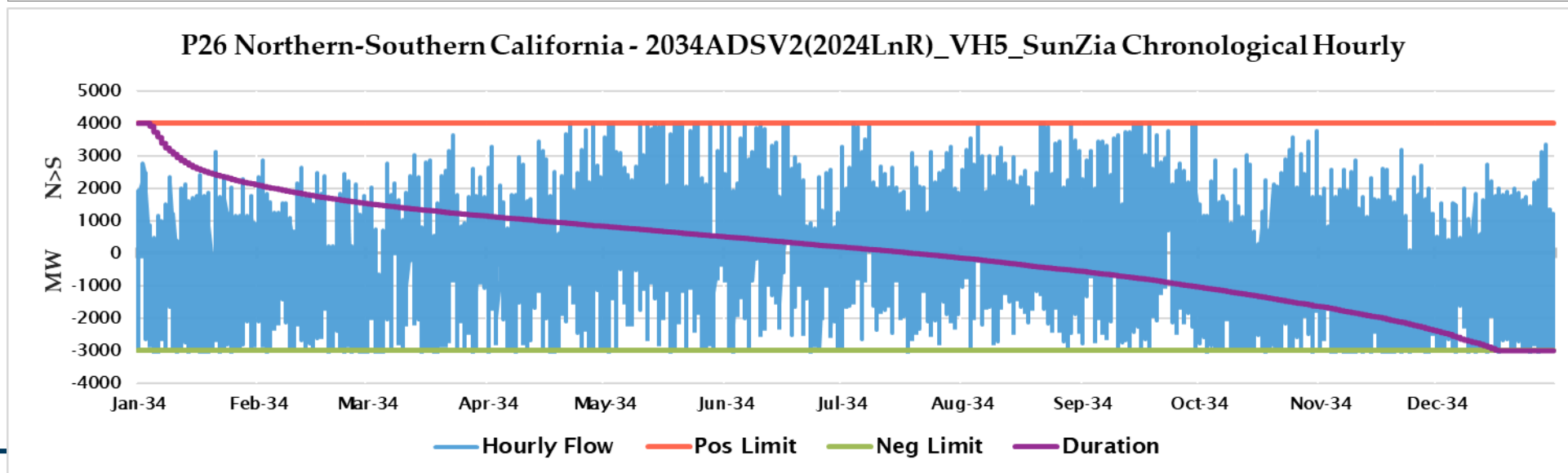
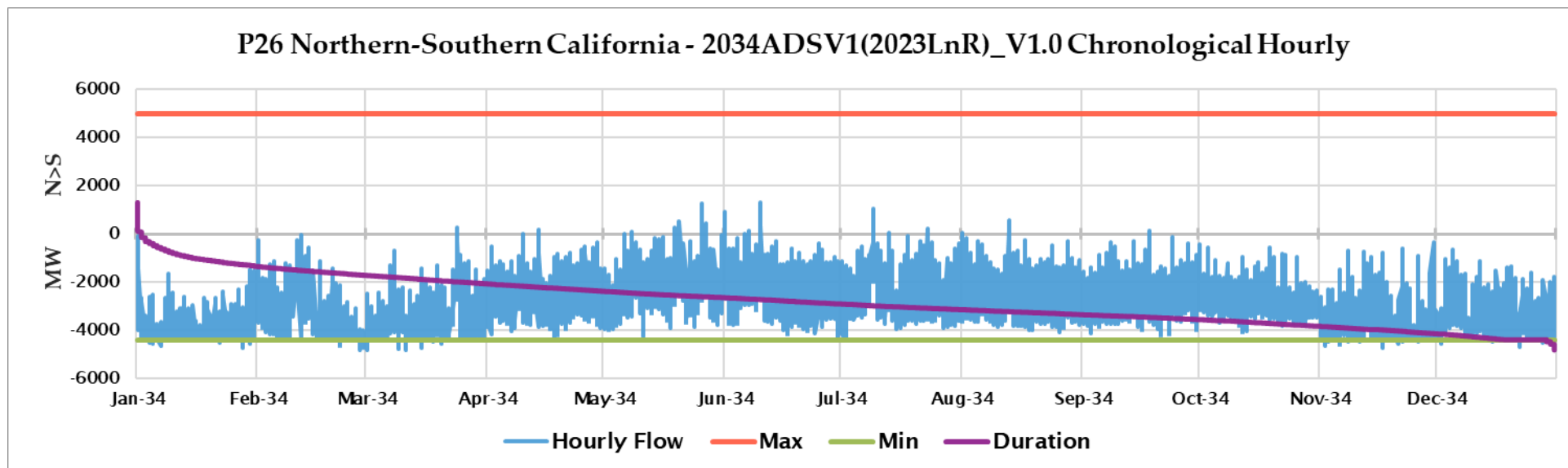
P27 Intermountain Power Project DC Line - 2034ADSV2(2024LnR)_VH5_SunZia Chronological Hourly



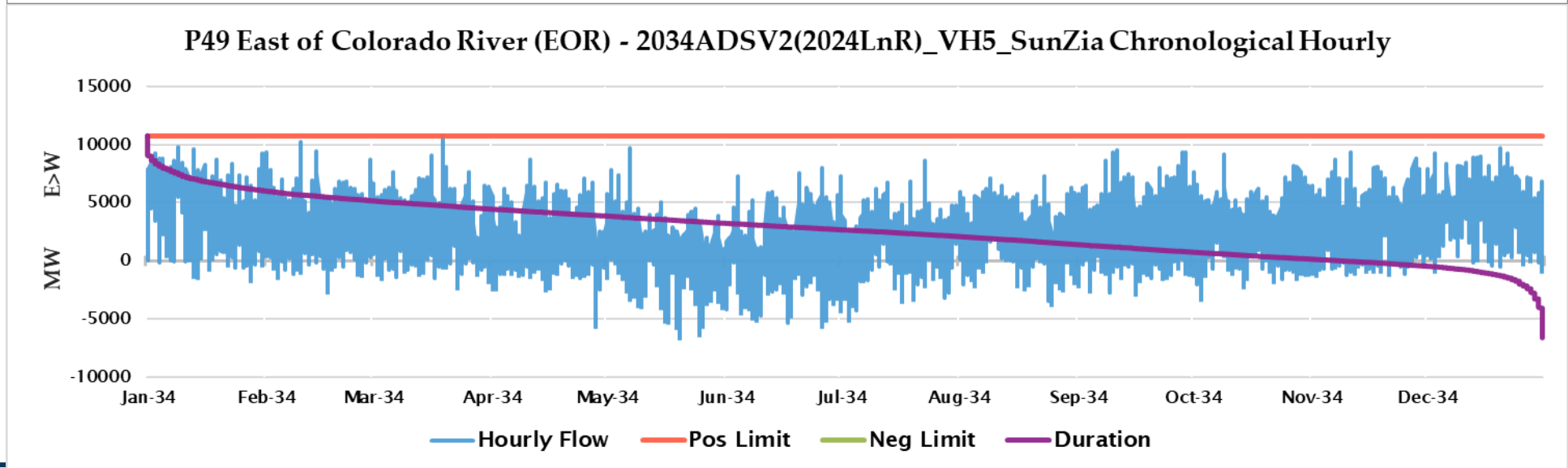
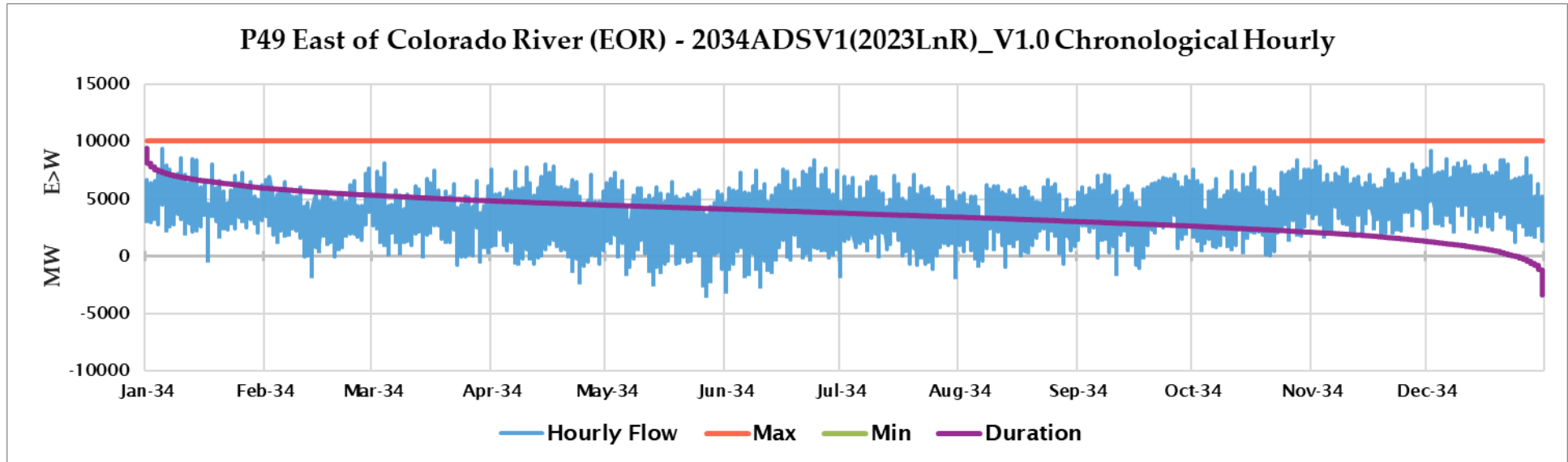
Path 65



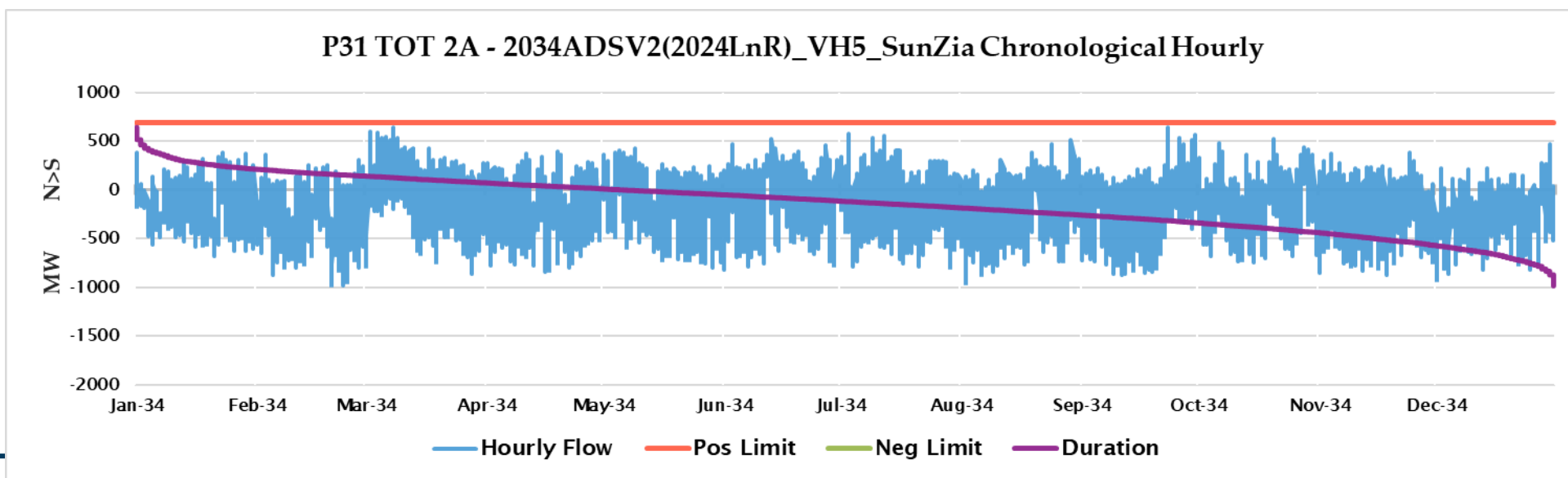
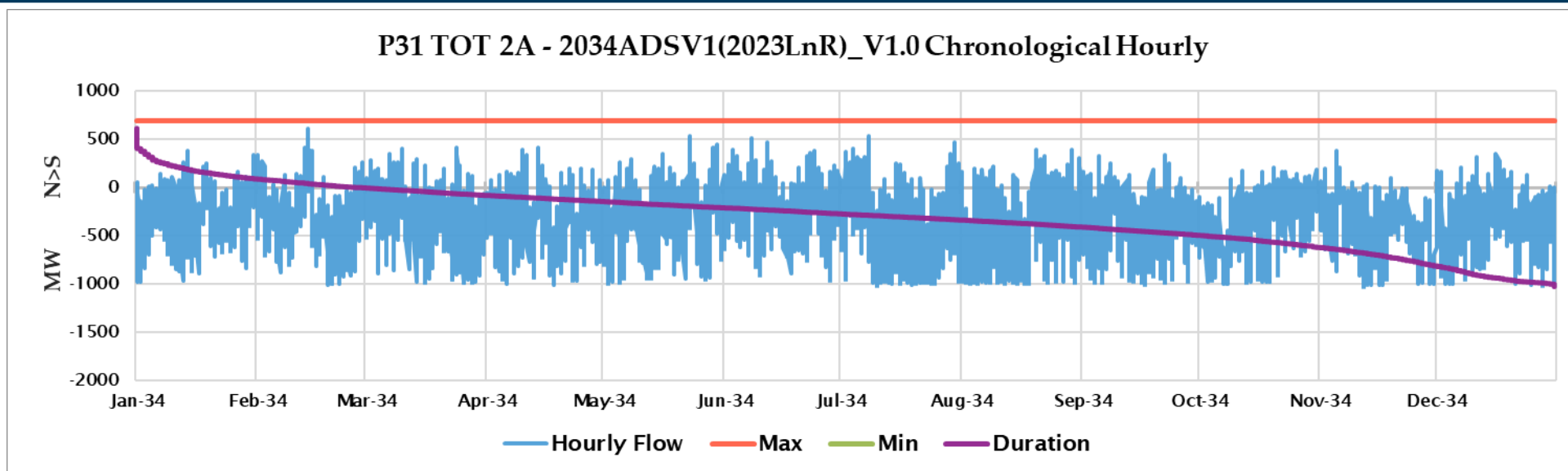
Path 26



Path 49



Path 31





www.wecc.org