

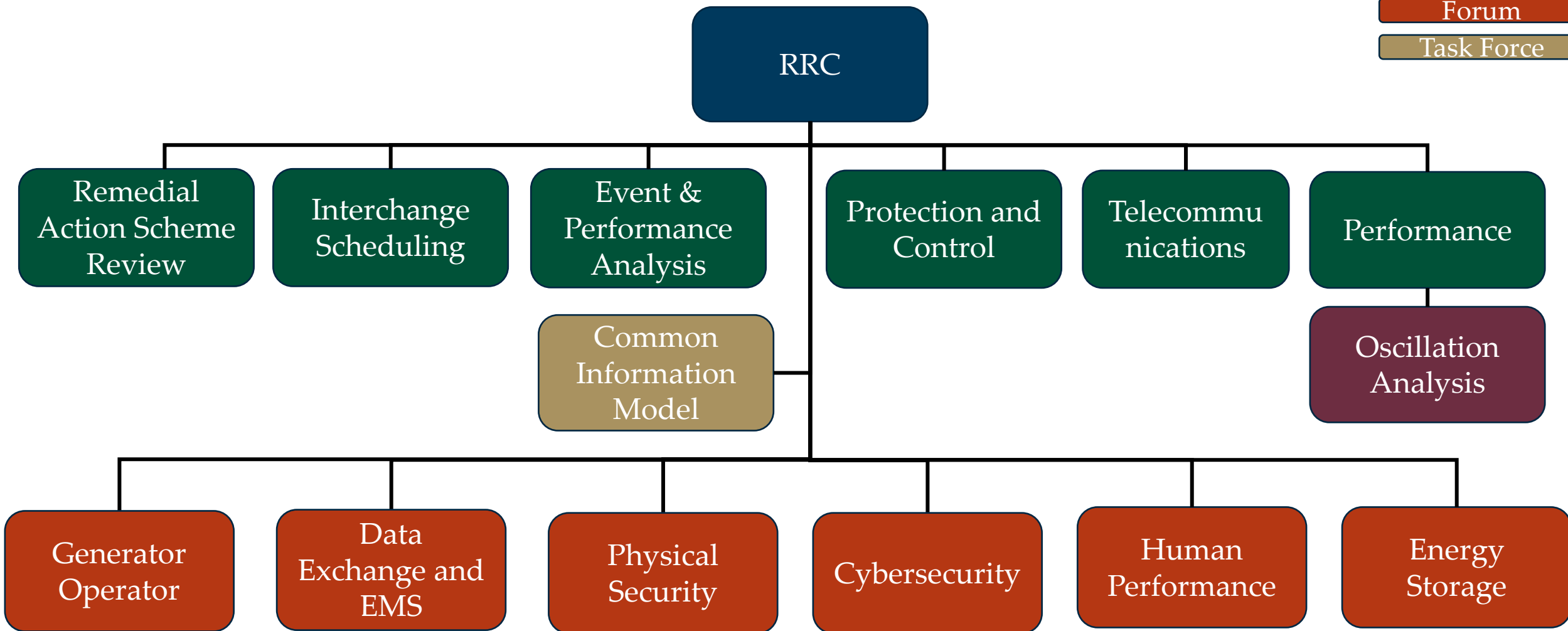
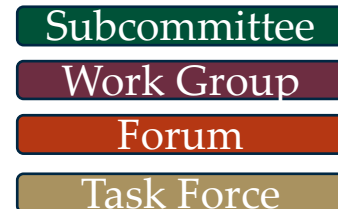


Reliability Risk Committee Risk Management Process Overview

August 17, 2023

Vic Howell
Director, Reliability Risk
Management

Reliability Risk Committee Overview



RRC Purpose

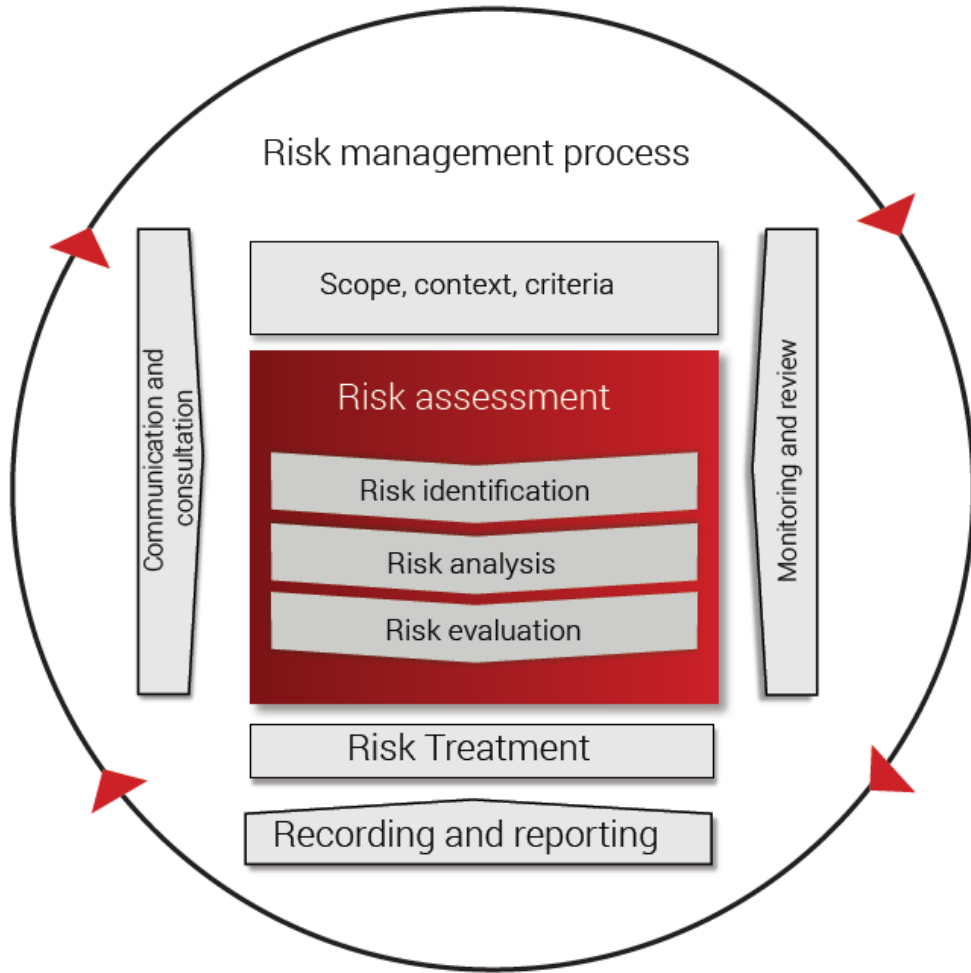
Identify and address known and emerging risks to the reliability and security of the Western Interconnection.

RRC Responsibilities

The RRC will:

1. Evaluate the reliability and security risks associated with relevant commercial, operational, and other industry practices.
2. Work with WECC staff and the Reliability Assessment Committee (RAC) to develop and maintain an ongoing, prioritized list of known and emerging reliability and security risks facing the Western Interconnection.
3. Coordinate and collaborate with WECC staff and the RAC to address priority risks.
4. Initiate actions to address priority risks through the appropriate expertise and mechanism.

RRC Risk Management Process



Reliability Risk Matrix						
Consequence/Impact (C)		Likelihood (L)				
		L1	L2	L3	L4	L5
		Very Unlikely	Unlikely	Possible	Likely	Almost Certain
C5	Severe	Medium	High	High	Extreme	Extreme
C4	Major	Medium	Medium	High	High	Extreme
C3	Moderate	Low	Medium	High	High	High
C2	Minor	Low	Low	Medium	Medium	High
C1	Negligible	Low	Low	Low	Medium	Medium

E. LaChapelle, F. Aliu and E. Emini, "ISO 31000:2018 Risk Management—Guidelines," PECB, 2018

So What?

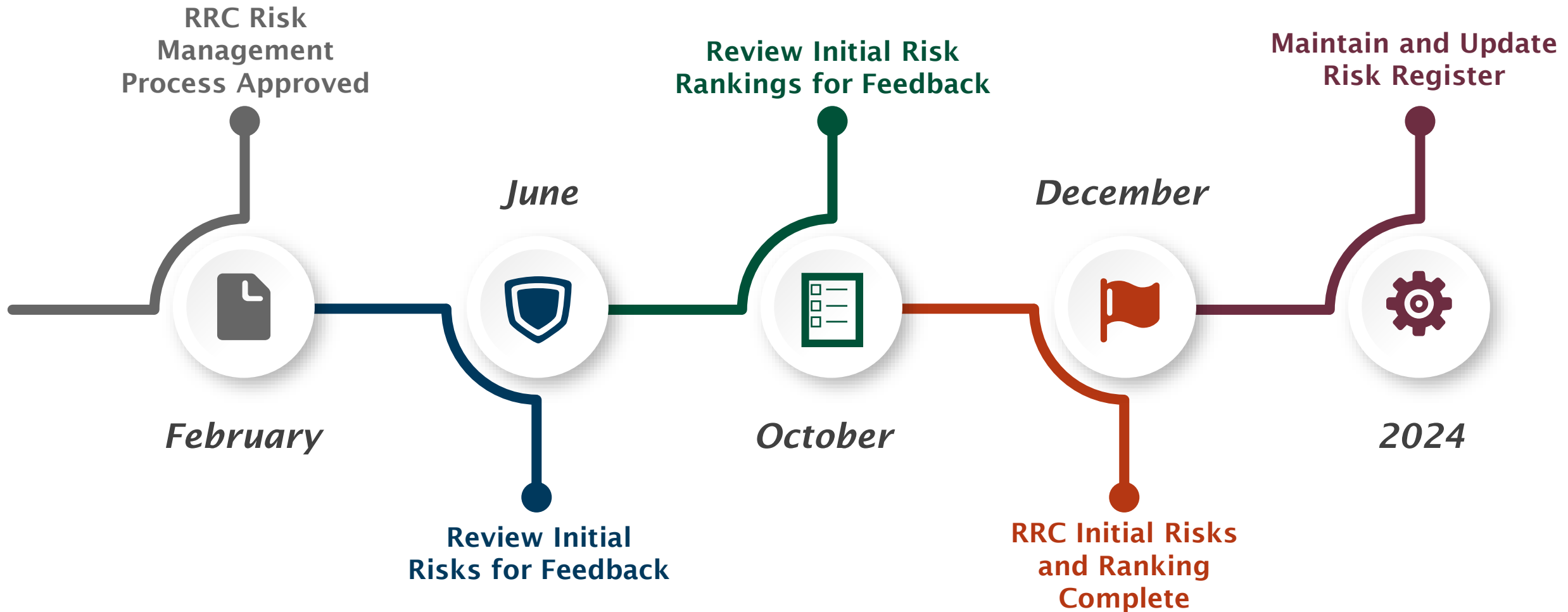
- What does this mean to me?
- Why should I care?

**Your engagement and participation in the
process is critical to its success!**

What Can I Do?

- Be a part of the process!
 - Communicate this process within your organization and other places
 - Ask the question – “What are the risks that need to be addressed?”
 - Help submit, analyze, evaluate, and address risks through the RRC Risk management process
 - Submit risks via the Risk Registry Initiation Form ([Link](#))
 - Help understand the causes, nature, and time-related factors associated with the risk
 - Engage in discussion with subject matter experts within your organization and others as needed to provide feedback

Timeline



How to Find Out More

- RRC Risk Management Process ([Link](#))
 - A living document that outlines the process
 - Will be updated as the process evolves
- Additional supporting documents
 - Risk Registry Initiation Form ([Link](#))
 - Draft Process Flow Diagram ([Link](#))
 - Draft Risk Register ([Link](#))
- ERO Framework to Address Known and Emerging Reliability and Security Risks ([Link](#))



www.wecc.org