



# Hourly Load Building

July 13, 2022

Tyler Butikofer  
Staff Engineer

# L&R Codes Used for Monthly Peak and Energy

---

- Peak codes
  - 1: Firm demand
  - 2-I, 2-L, 2-P, 2-R: Demand side management—Expected Available<sup>1</sup>
  - 19: Rooftop solar, expected demand served (at peak)
- Energy codes
  - 1: Firm energy
  - 2: Non-firm energy
  - BTM-rooftop solar energy
    - Based off BA level BTM shape and peak code 18, rooftop solar, expected installed capacity

<sup>1</sup> 2-I: Interruptible demand; 2-L: Load management; 2-P: Critical peak pricing with control; 2-R: Load as a capacity resource

# Issues with Data and Load Spreadsheet

---

- Spreadsheet was counting codes 3-IT, 3-LT, 3-PT, 3-RT<sup>2</sup>; total enrolled demand side management
- PNM code 19 was negative, changed to positive

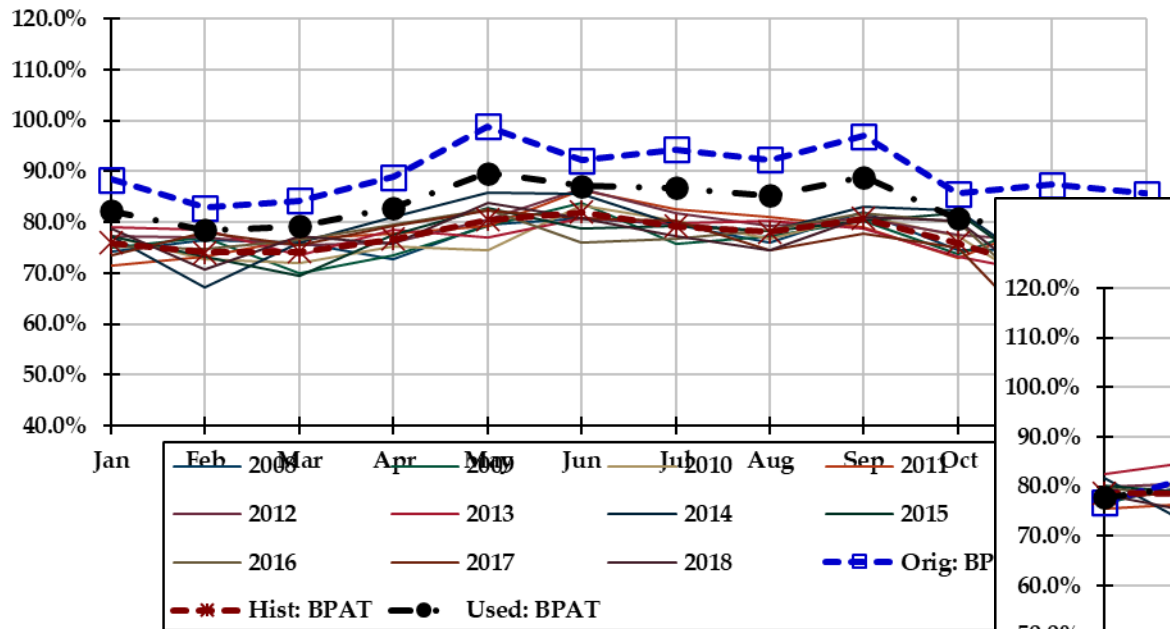
<sup>2</sup> 3-IT: Interruptible demand; 3-LT: Load management; 3-PT: Critical peak pricing with control; 3-RT: Load as a capacity resource

# Monthly Peak and Energy comparisons

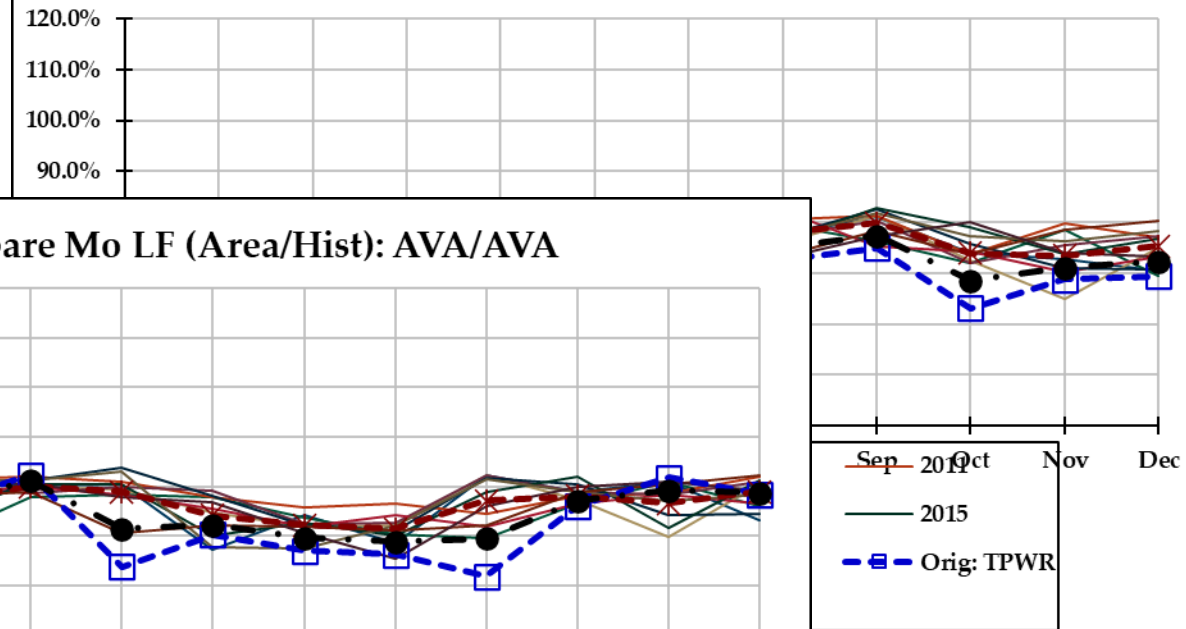
---

- February energy is off for every area (maybe leap year issue)
- Load factor modified, modifying the monthly energy:
  - BPAT, TPWR, PSE, AVA, CISD
- Peak and Energy doesn't match L&R
  - LDWP, BANC, CISC, CIPV, SPPC, NEVP, AZPS
- Energy doesn't match:
  - PAID

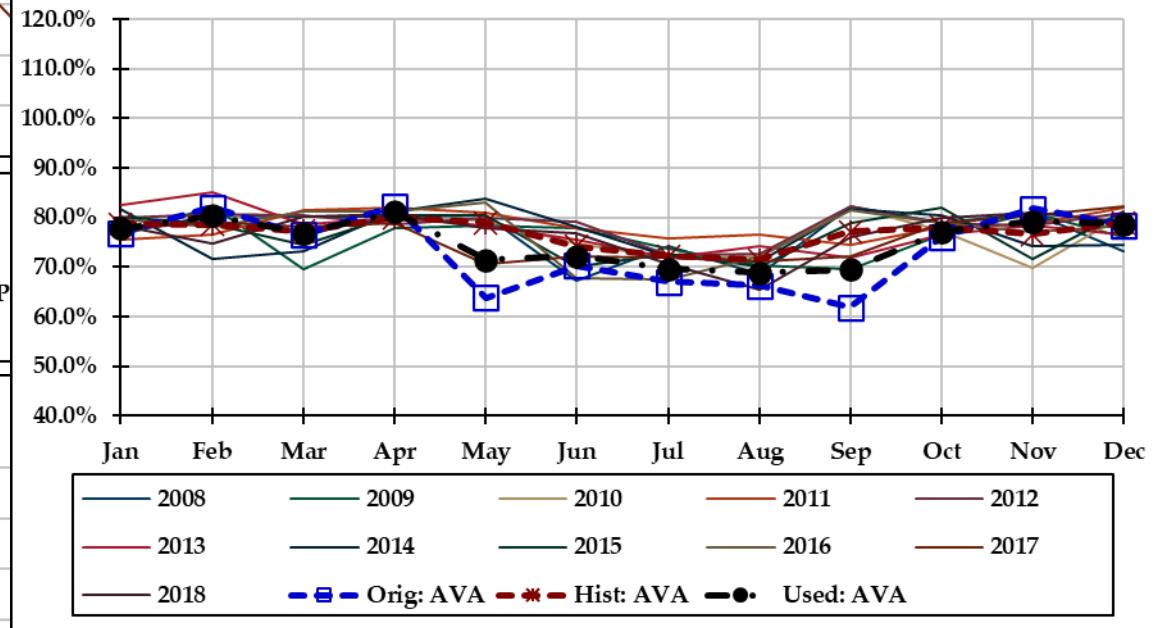
### Compare Mo LF (Area/Hist): BPAT/BPA



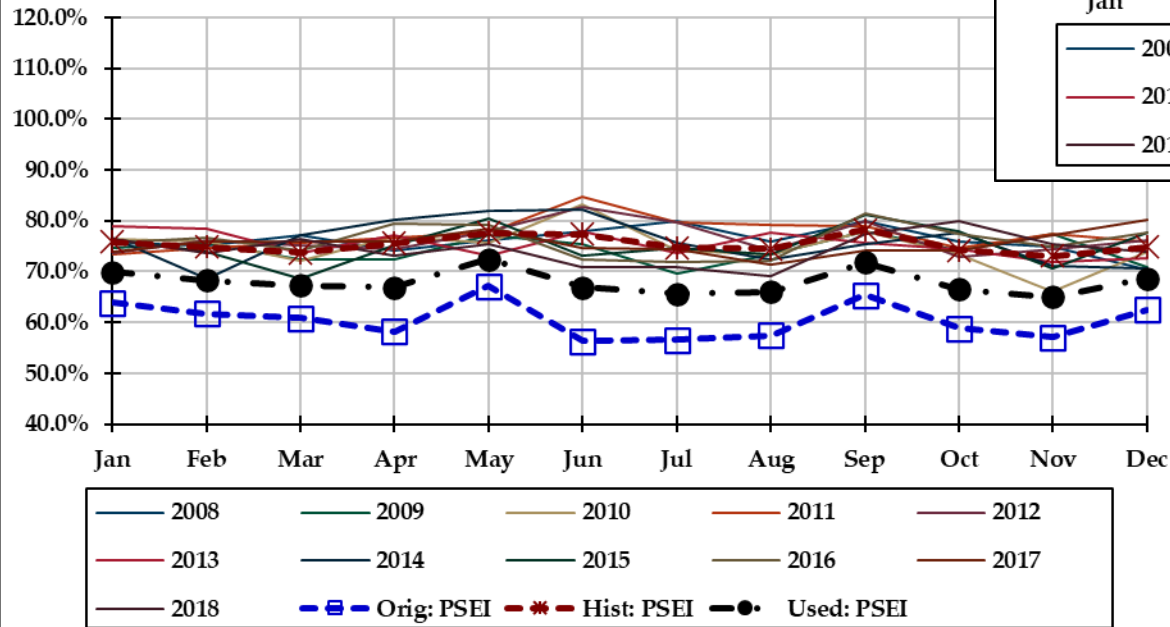
### Compare Mo LF (Area/Hist): TPWR/TPWR



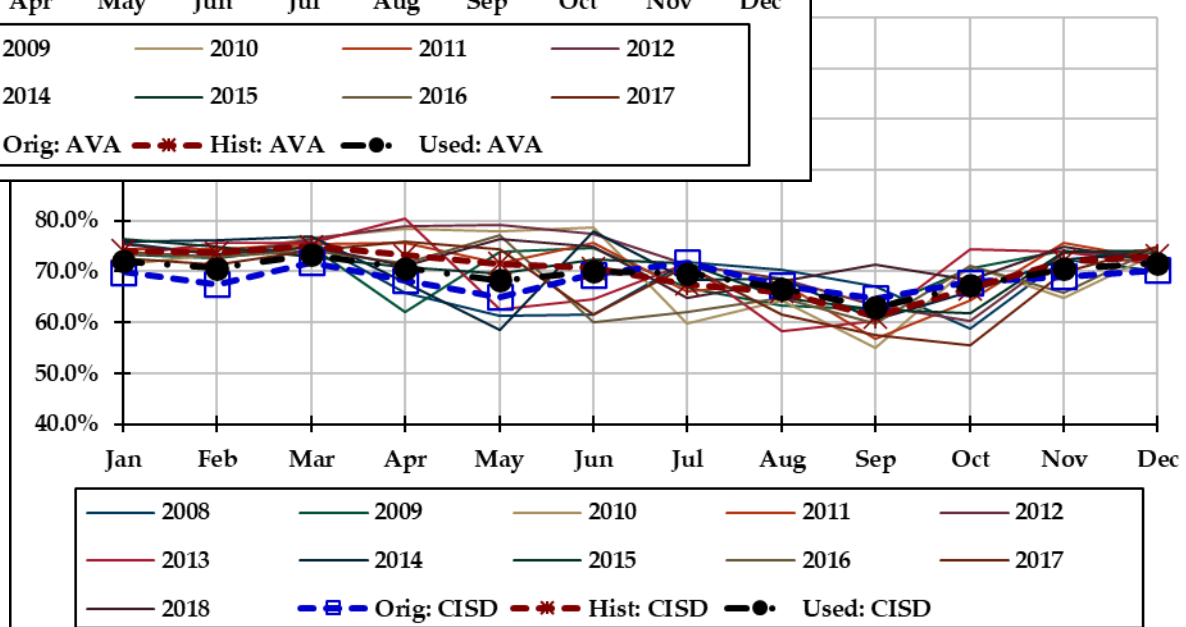
### Compare Mo LF (Area/Hist): AVA/AVA



### Compare Mo LF (Area/Hist): PSEI/PSE



### D/SDGE



# BTM Capacity Check

# BTM Capacity

---

- 17 areas report 0 MW for Rooftop solar installed capacity
- AESO reports 456 MW but wasn't in the case
- All other areas have the same capacity in PCM and L&R



## Contact:

Tyler Butikofer

[tbutikofer@wecc.org](mailto:tbutikofer@wecc.org)