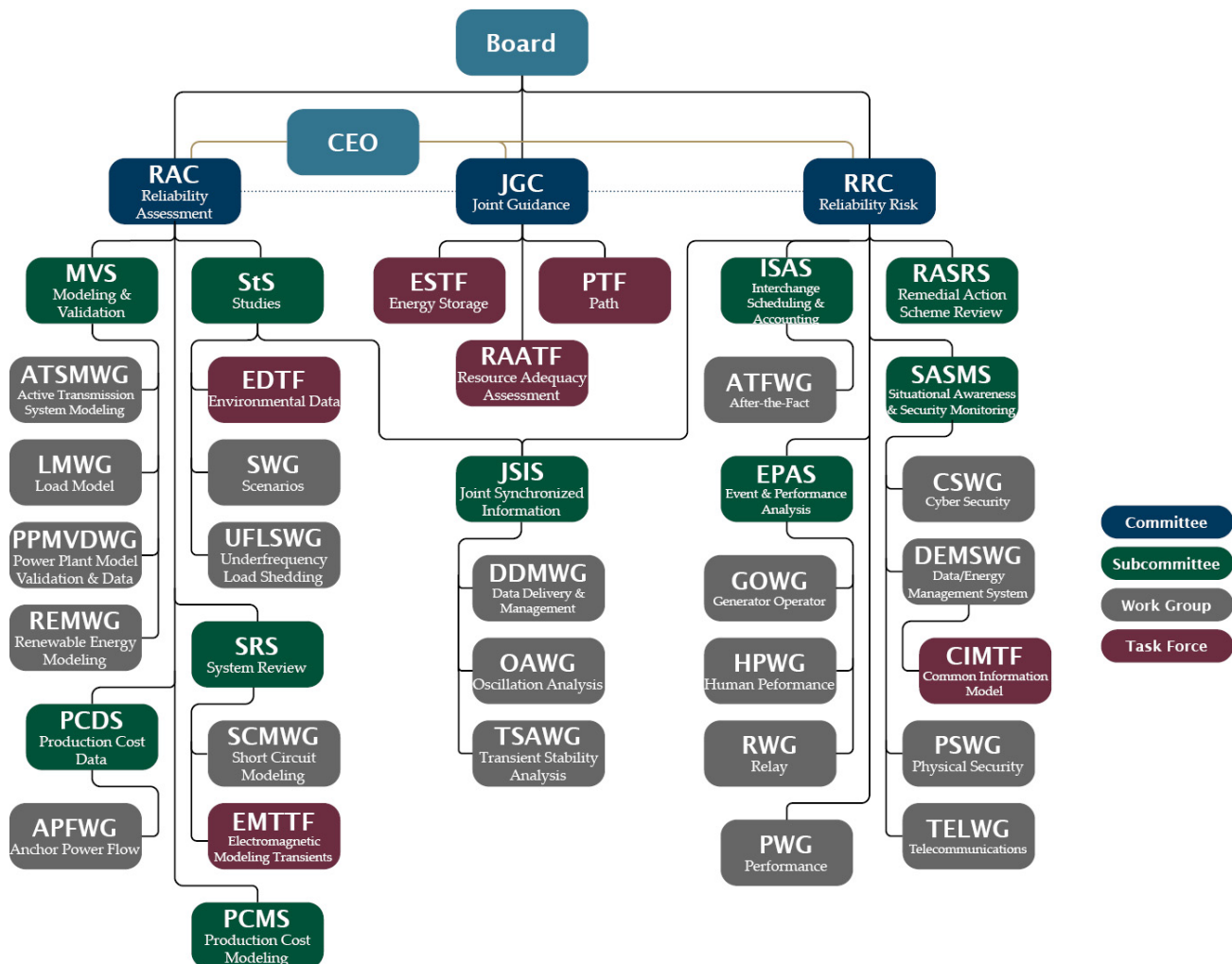


## Committee Categorization Process

The Joint Guidance Committee (JGC) approved the Technical Committee Categorization Process in March 2022. They then began the process of reviewing the existing technical committees, meaning any groups that report up to the JGC, Reliability Assessment Committee (RAC), Reliability Risk Committee (RRC), and their subgroups.

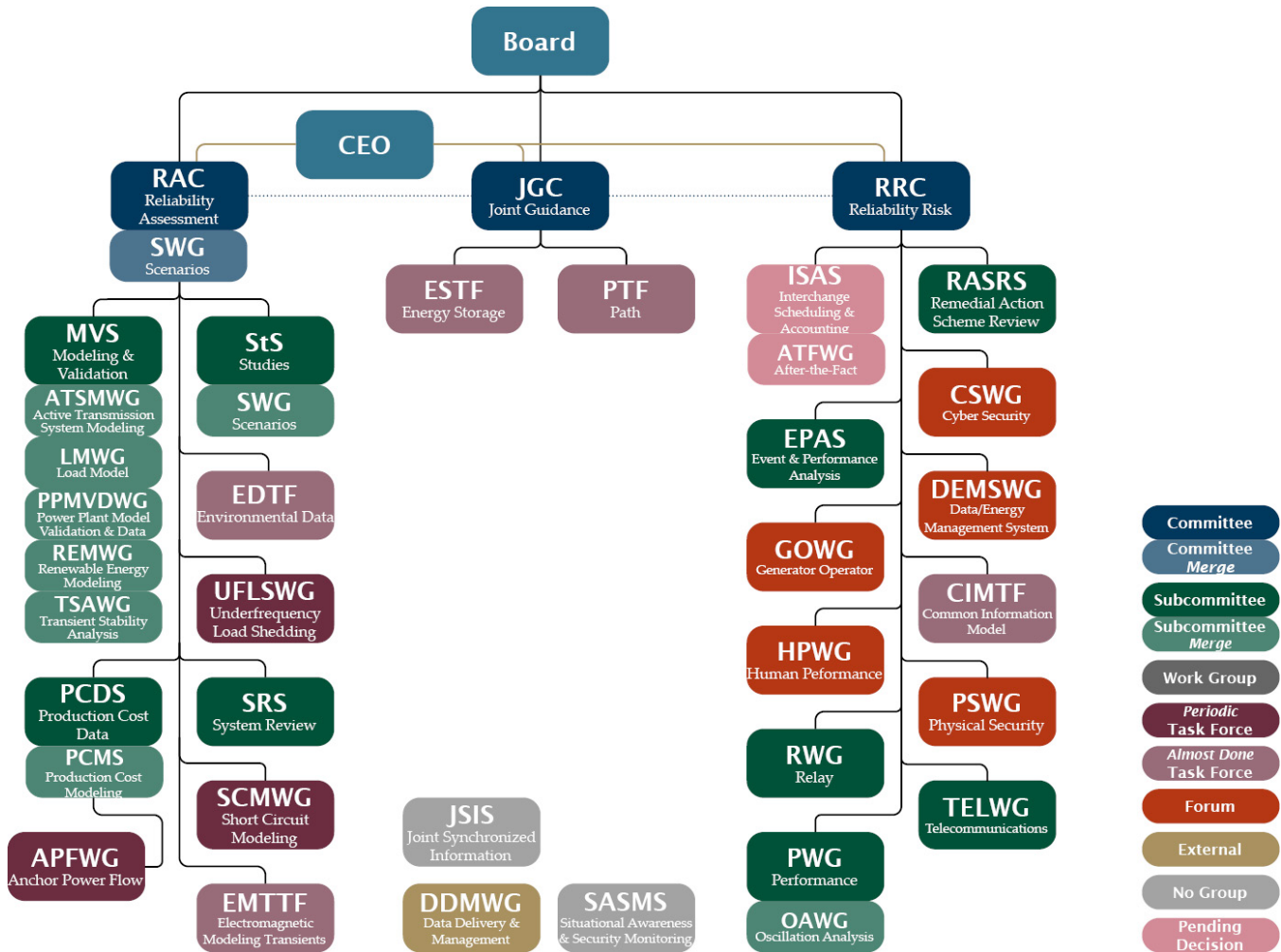
## Current Committee Structure

This diagram is the existing committee structure that the JGC reviewed, excluding RAC, RRC, and JGC.



## New Structure

The following is the new committee structure.



## Group Recommendations

The recommendations are sorted alphabetically by parent organization.

[JGC Subgroups](#)

[Joint RAC and RRC Groups](#)

[RAC Subgroups](#)

[RRC Subgroups](#)



## JGC Subgroups

---

### Energy Storage Task Force—ESTF

#### *Findings*

The ESTF is almost done with its white paper.

#### *Decision*

The ESTF will complete its work as a JGC task force by the end of 2022. If additional work is needed for energy storage, a new group can be established.

### Path Task Force—PTF

#### *Findings*

The PTF is almost done with its assigned work product.

#### *Decision*

The PTF will complete its work as a JGC task force by the end of 2022 and will seek JGC approval for the final report in Q1 of 2023.

### Resource Adequacy Assessment Task Force—RAATF

#### *Findings*

The RAATF is almost done with its assigned work product.

#### *Decision*

The RAATF will complete its work as a JGC task force by the end of 2022.

## Joint RAC and RRC Groups

---

### Data Delivery and Management Work Group—DDMWG

#### *Findings*

The DDMWG primarily discussed synchronized information data management. They have met infrequently and struggled to get leadership. The work of the DDMWG was reviewed, and the only remaining item is the phasor measurement unit (PMU) registry.



### *Decision*

The DDMWG will be disbanded, and the ownership of the PMU Registry will be transferred to RC West.

## **Joint Synchronized Information Subcommittee—JSIS**

### *Findings*

The JSIS generally oversees the work of its subgroups.

### *Decision*

The JSIS will be disbanded.

## **Oscillations Analysis Work Group—OAWG**

### *Findings*

The OAWG primarily focused on sharing analysis done by individual work group members.

### *Decision*

The analysis done by OAWG will be merged into the Performance Work Group.

## **Transient Stability Analysis Work Group—TSAWG**

### *Findings*

The TSAWG has not met in almost two years. The modeling elements specified in their charter are like the modeling requirements already being managed by the MVS.

### *Decision*

The work of the TSAWG will be rolled into the MVS and the group will be disbanded.

## **RAC Subgroups**

---

### **Anchor Power Flow Work Group—APFWG**

#### *Findings*

The initial work of the APFWG is almost complete and work going forward will be tied to the creation of the Anchor Data Set (ADS).



### *Decision*

The APFWG will become a periodic task force. The PCDS can revive the group during each ADS cycle to complete its tasks.

## **Active Transmission System Modeling Work Group—ATSMWG**

### *Findings*

The ATSMWG only meets as part of its parent committee agenda. The modeling needs are still underway.

### *Decision*

The ATSMWG will be merged into the MVS. This will eliminate the administrative overhead for the group of committees.

## **Environmental Data Task Force—EDTF**

### *Findings*

The EDTF primarily oversees the improvement of the Environmental Data Viewer. The viewer can be used for siting transmission while accommodating various environmental, tribal, and land use requirements.

### *Decision*

The EDTF will finish as a task force reporting to the RAC with an action item to find a new home for the Environmental Data Viewer by the end of March 2023.

## **Electromagnetic Modeling Transients Task Force—EMTTF**

### *Findings*

The EMTTF was established to complete a temporary work product to present initial recommendations on what data need to be collected and what software and models are available to perform analysis.

### *Decision*

The EMTTF will complete its work as a RAC task force as soon as possible with added project management support as needed.



### Load Model Work Group—LMWG

#### *Findings*

The LMWG only meets as part of its parent committee agenda. The modeling needs are still underway.

#### *Decision*

The LMWG will be merged into the MVS. This will eliminate the administrative overhead for the group of committees.

### Modeling and Validation Subcommittee—MVS

#### *Findings*

The MVS meets with its subgroups on the same agenda. The modeling from the MVS is broadly known and respected in the industry.

#### *Decision*

The MVS will remain a subcommittee under the RAC and will have all its subgroups merged into it, as well as the Transient Stability Analysis Work Group (TSAWG). The work of the TSAWG is also focused on models needed for similar modeling.

### Production Cost Data Subcommittee—PCDS

#### *Findings*

The PCDS is the primary group responsible for creating the Anchor Data Set (ADS).

#### *Decision*

The PCDS will be maintained as a subcommittee under the RAC.

### Production Cost Modeling Subcommittee—PCMS

#### *Findings*

The PCMS supports the modeling needs of the ADS and has a large overlap with the PCDS.

#### *Decision*

The PCMS will be merged into the PCDS. Identified modeling needs can be handled as action items, task forces, or advisory groups as needed.



### **Power Plant Model Validation and Data Work Group—PPMVDWG**

#### *Findings*

The PPMVDWG only meets as part of its parent committee agenda. The modeling needs are still underway.

#### *Decision*

The PPMVDWG will be merged into the MVS. This will eliminate the administrative overhead for the group of committees.

### **Renewable Energy Modeling Work Group—REMWDG**

#### *Findings*

The REMWDG only meets as part of its parent committee agenda. The modeling needs are still underway.

#### *Decision*

The REMWDG will be merged into the MVS. This will eliminate the administrative overhead for the group of committees.

### **Short-Circuit Modeling Work Group—SCMWG**

#### *Findings*

The first task of the SCMWG is to strategize how to collect data, how to facilitate studies, and what tools are needed to move forward with collecting data and performing the analysis. The SCMWG data and modeling is independent of the SRS.

#### *Decision*

The SCMWG should complete the above initial task as a task force. After completion of the initial work, the task force should be disbanded, and a successor will be set up as appropriate.

### **System Review Subcommittee—SRS**

#### *Findings*

The SRS manages the creation of the base cases continuously.

#### *Decision*

The SRS will remain a subcommittee reporting to the RAC.



### Studies Subcommittee—StS

#### *Findings*

The StS is responsible for overseeing the study program. The studies performed can be expanded to include resource adequacy assessments.

#### *Decision*

The StS will remain a subcommittee reporting to the RAC.

### Scenarios Work Group—SWG

#### *Findings*

The work of the SWG falls into two categories: scenario creation and scenario-based studies. The SWG work should be elevated to a higher level to ensure efficient and effective incorporation of scenarios into reliability assessments and the right level of involvement from stakeholders. The SWG was formed to meet a need that has now changed, and new skillsets are needed to complete the new work.

#### *Decision*

To avoid duplication and maximize the work that the SWG has historically provided, it is reasonable to merge the work of SWG with other groups.

The scenario creation portion of the SWG will be merged into the RAC. The FERC RM21-17 Notice of Proposed Rulemaking calls for long-term scenarios to help the Western Interconnection meet the long-term regional transmission planning requirements. The RAC will be responsible for developing the new scenarios process for this purpose and will ensure the scenarios are incorporated into the committee work.

The scenario-based studies portion of the SWG will be merged into the StS. The StS already oversees the study program creation and execution, in which SWG has actively participated. The SWG participation at StS will bolster the StS's effectiveness. This participation will continue to include membership on advisory groups to assist in the study assessments.

Members of the SWG will be encouraged to join and participate in the scenario work done at the RAC and StS.

### Underfrequency Load Shedding Work Group—UFLSWG

#### *Findings*

NERC reliability standard PRC-006 requires Planning Coordinators, UFLS Entities, and Transmission Owners to set design and documentation requirements for a regional UFLS program. The NERC





standard requires that a design assessment occur at least once every five years; however, the UFLSWG charter requires that a design assessment occur every two years.

### *Decision*

The UFLSWG will finish its current assessment and all associated subsequent work. Though this document indicates that the recommendation is for the UFLSWG to become a periodic task force, the RAC should work with the UFLSWG to determine whether the current biennial requirement for performing the UFLS design assessment is still appropriate, given the PRC-006-5 requirement to perform this assessment at least once every five years. Based on the outcome of that decision, the RAC should determine whether it is appropriate for the UFLSWG to continue as a work group, or whether the UFLSWG should be disbanded and replaced with a periodic task force to be formed as needed in support of PRC-006-5 and Regional Criteria PRC-006-WECC-3.1. Whether the UFLSWG continues as a work group or as a periodic task force, the group should continue in the role as described in the Coordinated Plan developed under PRC 006-WECC-3.1 Underfrequency Load Shedding criterion.

## **RRC Subgroups**

---

### **After-the-Fact Work Group—ATFWG**

This decision will require more JGC discussion.

### **Common Information Model Task Force—CIMTF**

#### *Findings*

The CIMTF is almost done with its assigned work.

#### *Decision*

The CIMTF will complete its work as an RRC task force as soon as possible.

### **Cyber Security Work Group—CSWG**

#### *Findings*

The CSWG is an information-sharing group with potential ongoing conversations.

#### *Decision*

The CSWG will become a forum reporting to the RRC. Any work needed in the cybersecurity area will be handled as an RRC action item or task force.



## **Data and Energy Management System Work Group—DEMSWG**

### *Findings*

The DEMSWG is an information-sharing group with potential ongoing conversations. While its discussion topics are related to the work done at the Reliability Coordinators (RC), the existing, related group at RC West is for disseminating information rather than hosting discussions.

### *Decision*

The DEMSWG will become a forum reporting to the RRC.

## **Event and Performance Analysis Subcommittee—EPAS**

### *Findings*

The EPAS helps perform an essential reliability function of event analysis.

### *Decision*

The EPAS will remain a subcommittee under the RRC.

## **Generator Operator Work Group—GOWG**

### *Findings*

The GOWG is an information-sharing group with potential ongoing conversations.

### *Decision*

The GOWG will become a forum reporting to the RRC.

## **Human Performance Work Group—HPWG**

### *Findings*

The HPWG is an information-sharing group with potential ongoing conversations.

### *Decision*

The HPWG will become a forum reporting to the RRC.

## **Interchange Scheduling and Accounting Subcommittee—ISAS**

This decision will require more JGC discussion.



### Performance Work Group—PWG

#### *Findings*

The PWG analyzes the performance of the grid. In recent years it has struggled to accomplish all the analyses it wants due to having a small membership.

#### *Decision*

The PWG will become a subcommittee and will continue reporting to the RRC. The membership of the PWG will be expanded, and more analysis will be added to its charter.

### Physical Security Work Group—PSWG

#### *Findings*

The PSWG is an information sharing group with potential ongoing conversations.

#### *Decision*

The PSWG will become a forum reporting to the RRC. Any work needed in the physical security area will be handled as an RRC action item or task force.

### Remedial Action Scheme Reliability Subcommittee—RASRS

#### *Findings*

The RASRS provide a needed review of the Remedial Action Schemes (RAS) in the Western Interconnection. They have a diverse membership from various areas of expertise. The formal approval of RAS is given to the RCs, however, the planning perspective could be lost by moving the RAS review to the RCs.

#### *Decision*

Maintain the RASRS as a subcommittee reporting to the RRC.

### Relay Work Group—RWG

#### *Findings*

The work of the RWG supports the NERC MIDAS process. The work is independent of its parent committee.

#### *Decision*

The RWG will become a subcommittee reporting to the RRC.



## **Situational Awareness and Security Monitoring Subcommittee—SASMS**

### *Findings*

The SASMS generally oversees the work of its subgroups.

### *Decision*

The SASMS will be disbanded.

## **Telecommunications Work Group—TELWG**

### *Findings*

The work of the TELWG includes several guidelines that are reviewed at least every five years or as needed. The work is distributed over time. The information sharing in the TELWG is also a benefit of the group and informs the guideline revisions.

### *Decision*

The TELWG will become a subcommittee reporting to the RRC.

