

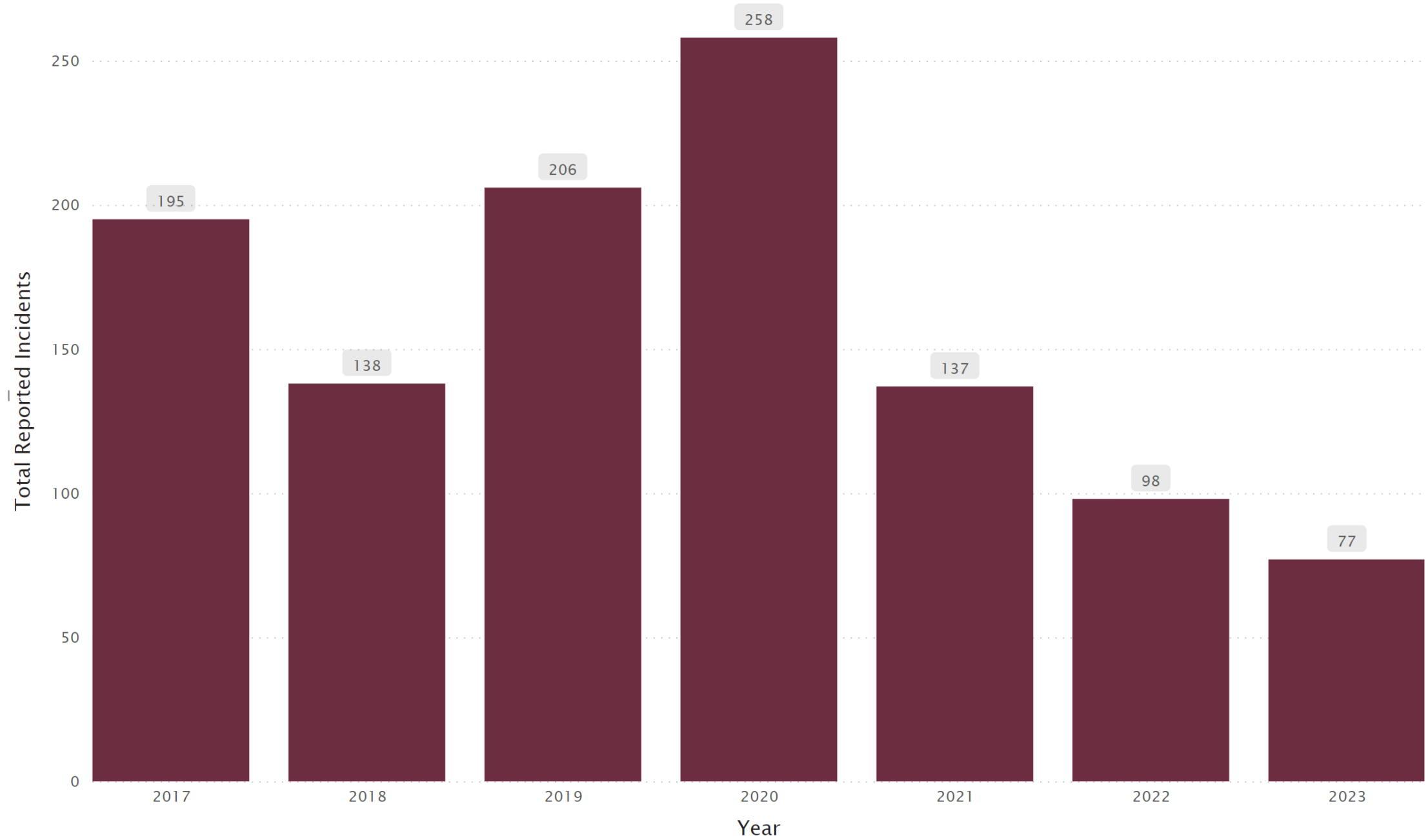


Wildfire Data Analysis Update

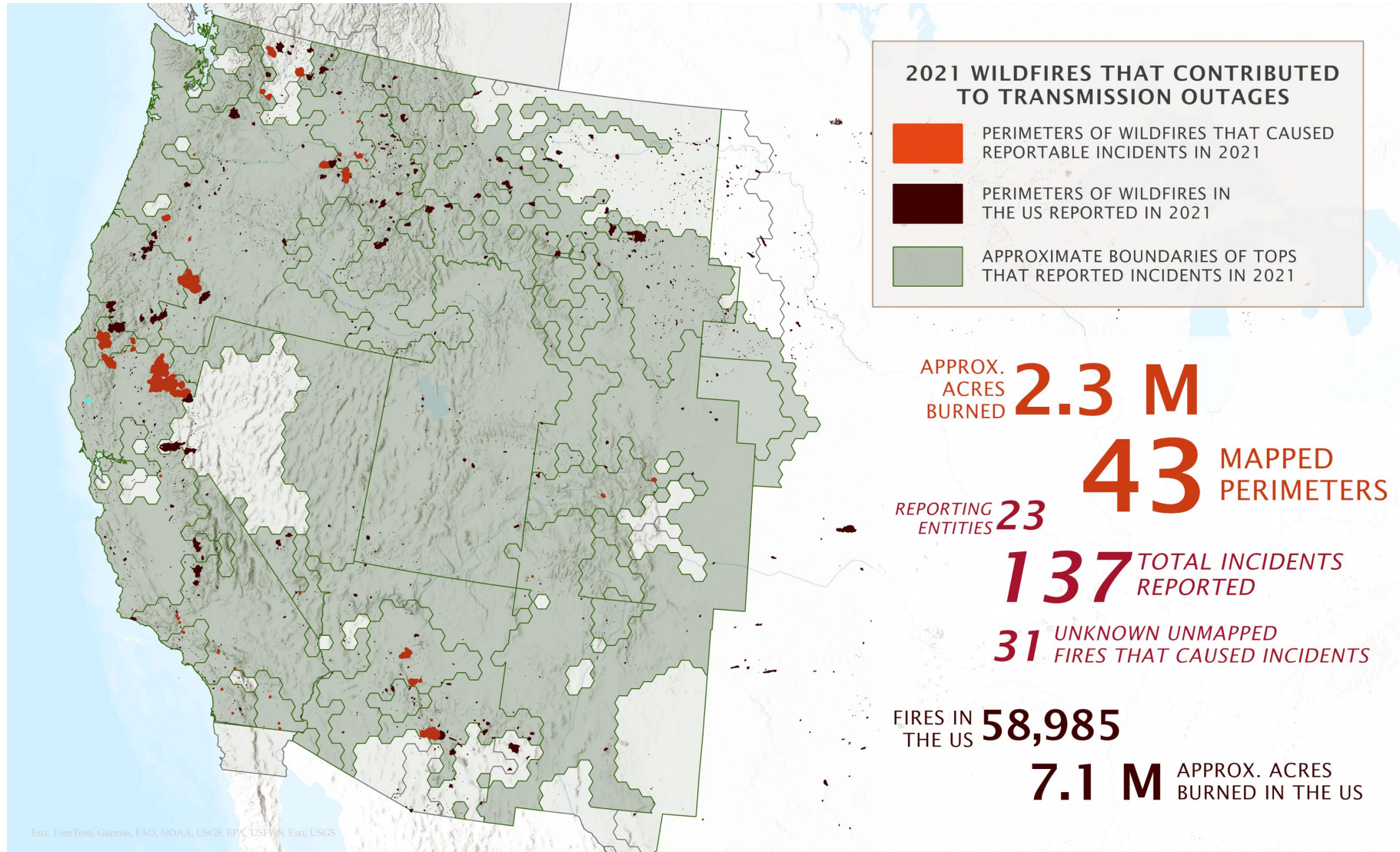
October 16 RRC Meeting

Steve Ashbaker
Reliability Initiatives Director

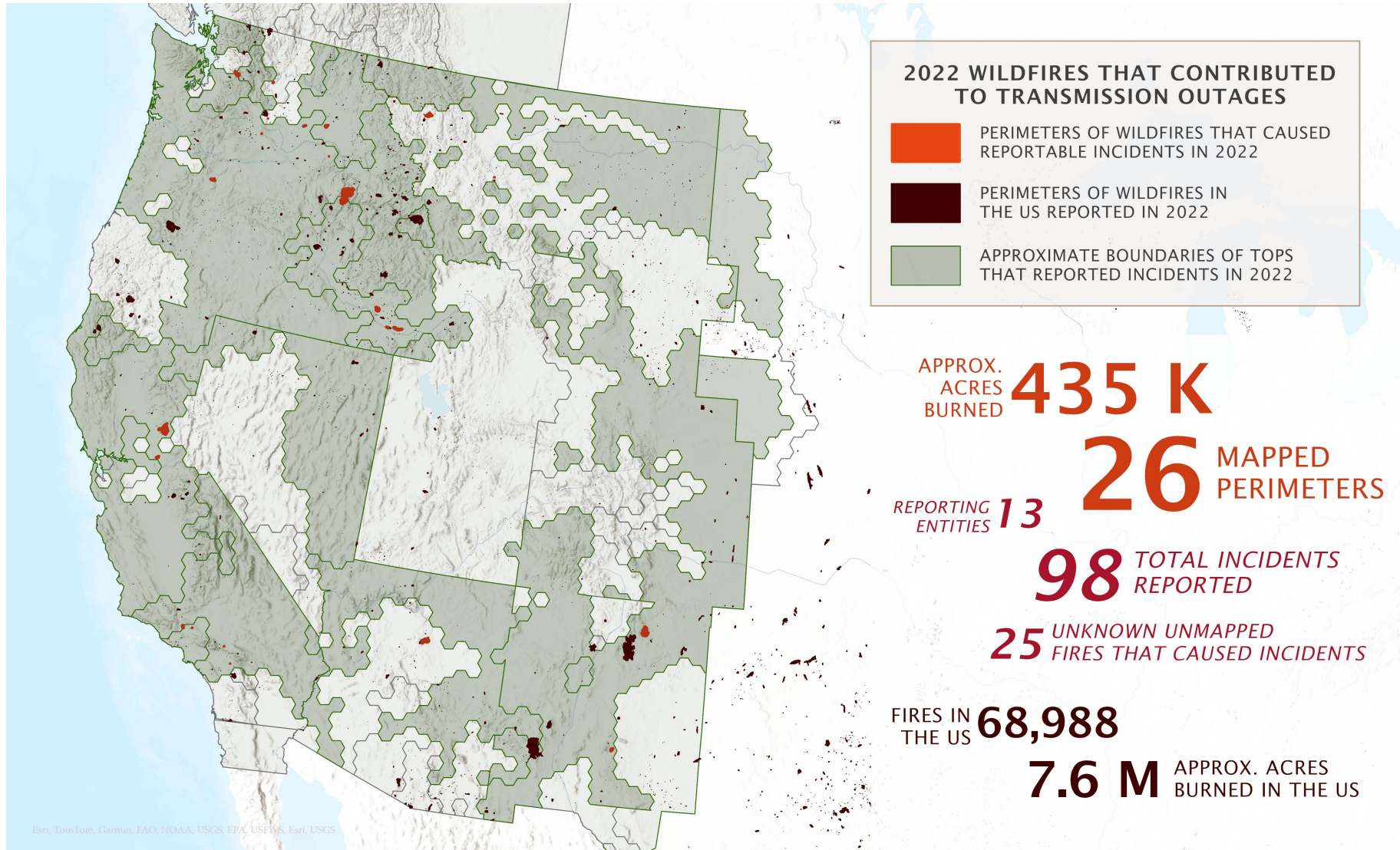
Total Reported Incidents 2017 - 2023



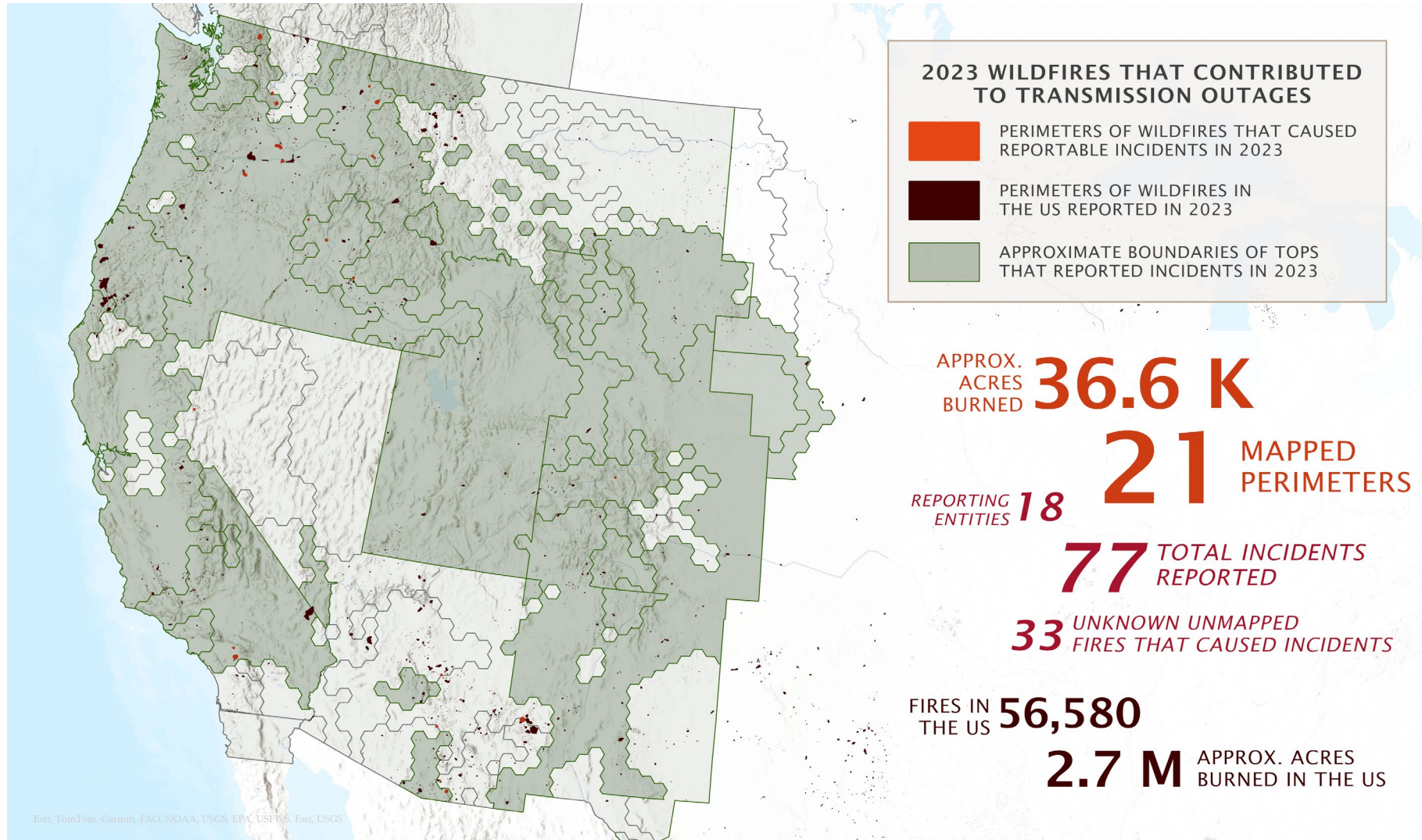
2021 WF Map



2022 Wildfire Map



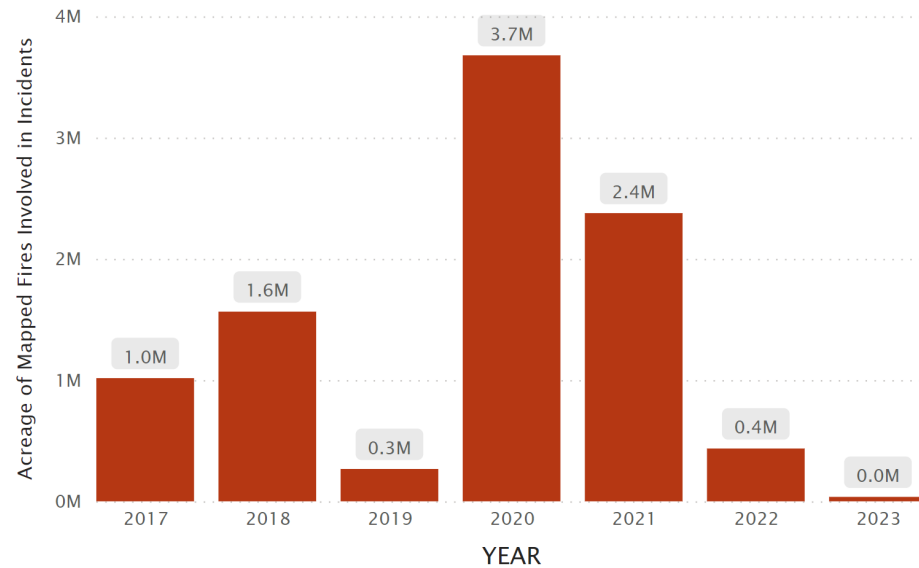
2023 Wildfire Map



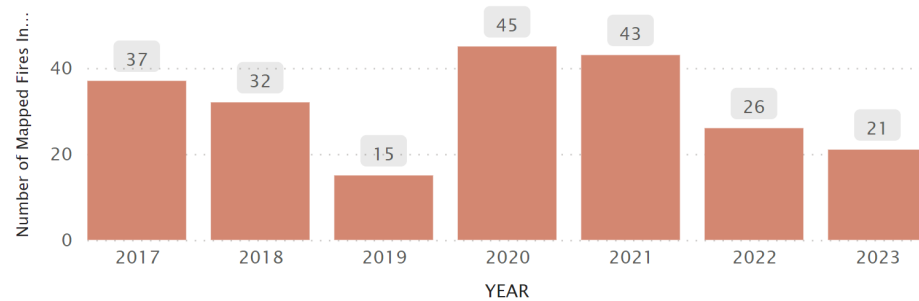
Fire Statistics

FIRES REPORTED WITH A LINE OUTAGE IN WECC

Acreage of Mapped Fires Involved in Line Outages

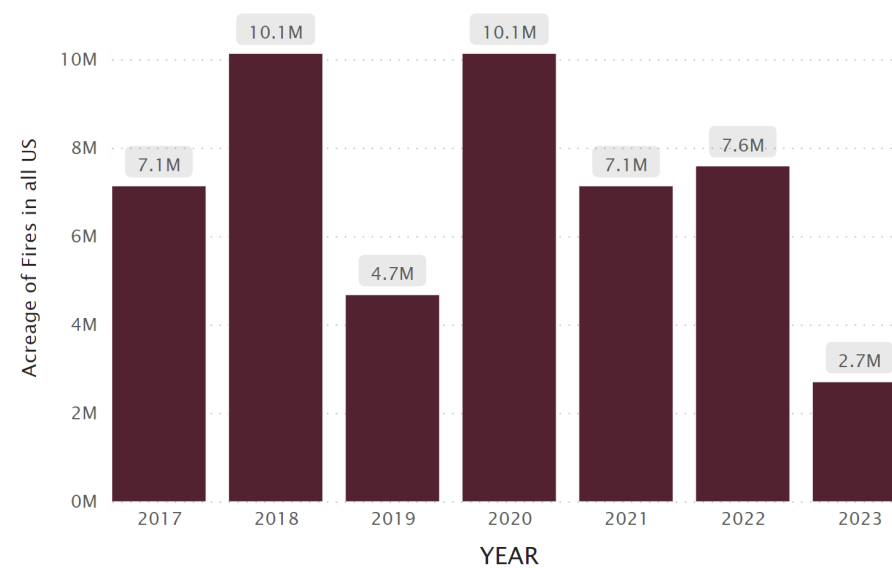


Number of Mapped Fires Involved in Line Outages

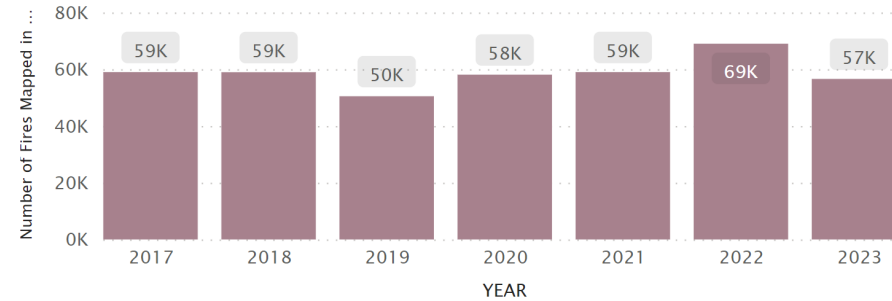


FIRES REPORTED IN ALL US BY YEAR

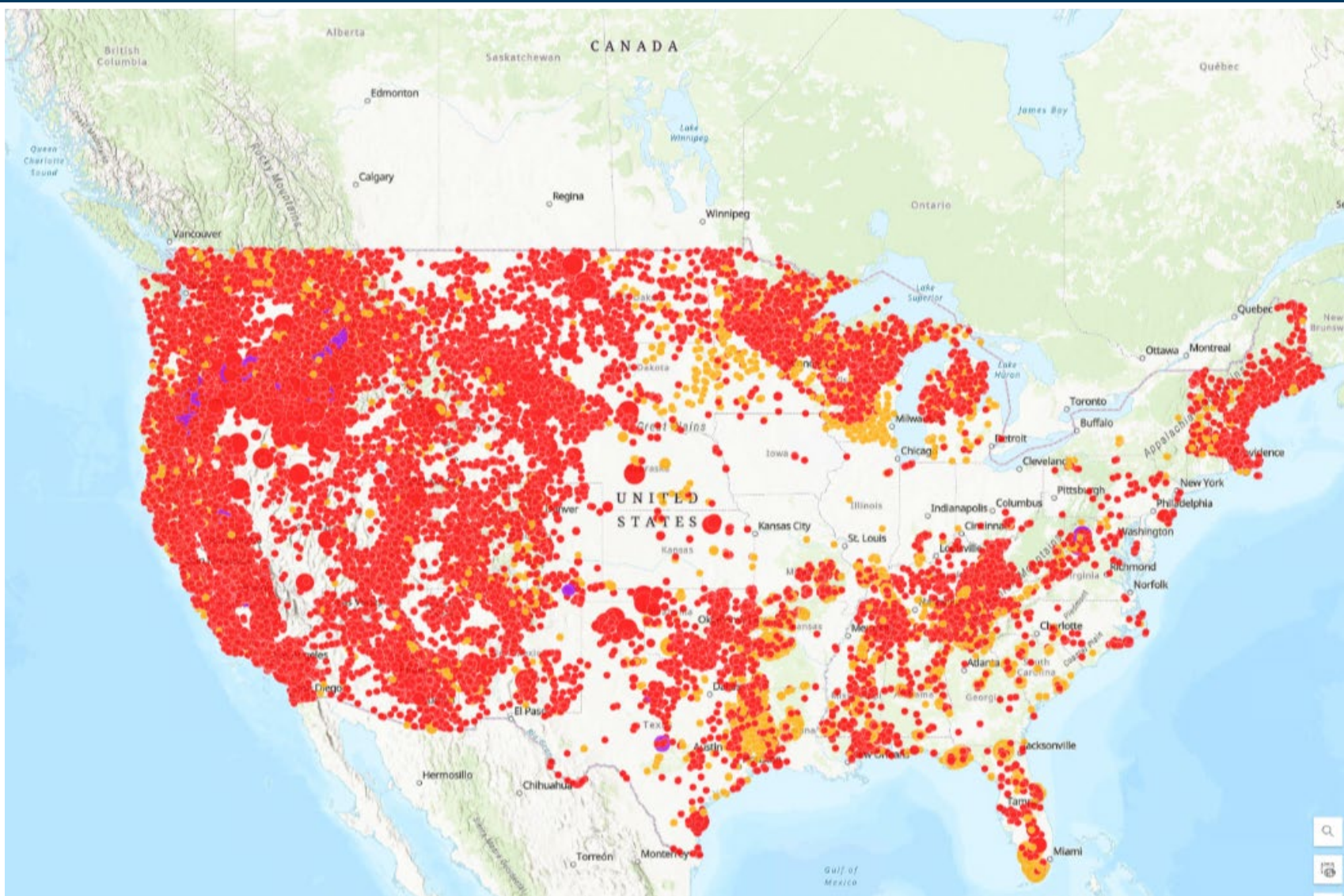
Acreage of all Fire Perimeters Mapped in the US



Number of Fires Reported and Mapped in the US



2024 Year-date Wildfires



2025 Wildfire DR Timeline

- Data relevant reporting period—January 1 – December 31, 2024
- 2025 Wildfire DR Sent to WECC TOPs—Week of January 6–10, 2025
- Data due—Week of February 10–14, 2025

2024 Wildfire DR

- Total reported incidents by years
- Total incidents by voltage class
- Average duration in hours of line's removed from service by voltage and year
- Percentage of lines effected by voltage class
- Number outages caused by wildfires on lines part of the Major WECC Transfer Paths
- Number of incidents on BES lines by voltage class

2024 Wildfire DR

- Total Incidents per line section
- Average duration in hours of total reported incidents by voltage class
- Number of transmission line outages by reason for line removal
- Average amount of load dropped (in megawatts) per incident
- Average number of customers losing service per incident
- Do you have a PSPS or similar wildfire pre-emptive program
- Number of outages associated with PSPS or state programs
- Wildfire location (latitude and longitude)

