



PCDS Meeting

April 24, 2024

Jon Jensen
WECC Staff

Announcements

- 2034 ADS PCM V1 —posted Posted to Website
- BTM PV —Received the county information from PNNL, now sent to NREL for BTM PV ratios/weightings for each bus
- 2024 L&R Update
- Posted Chelsea's 2032 to 2034 comparison to the ADS Team Site

Owner by Area

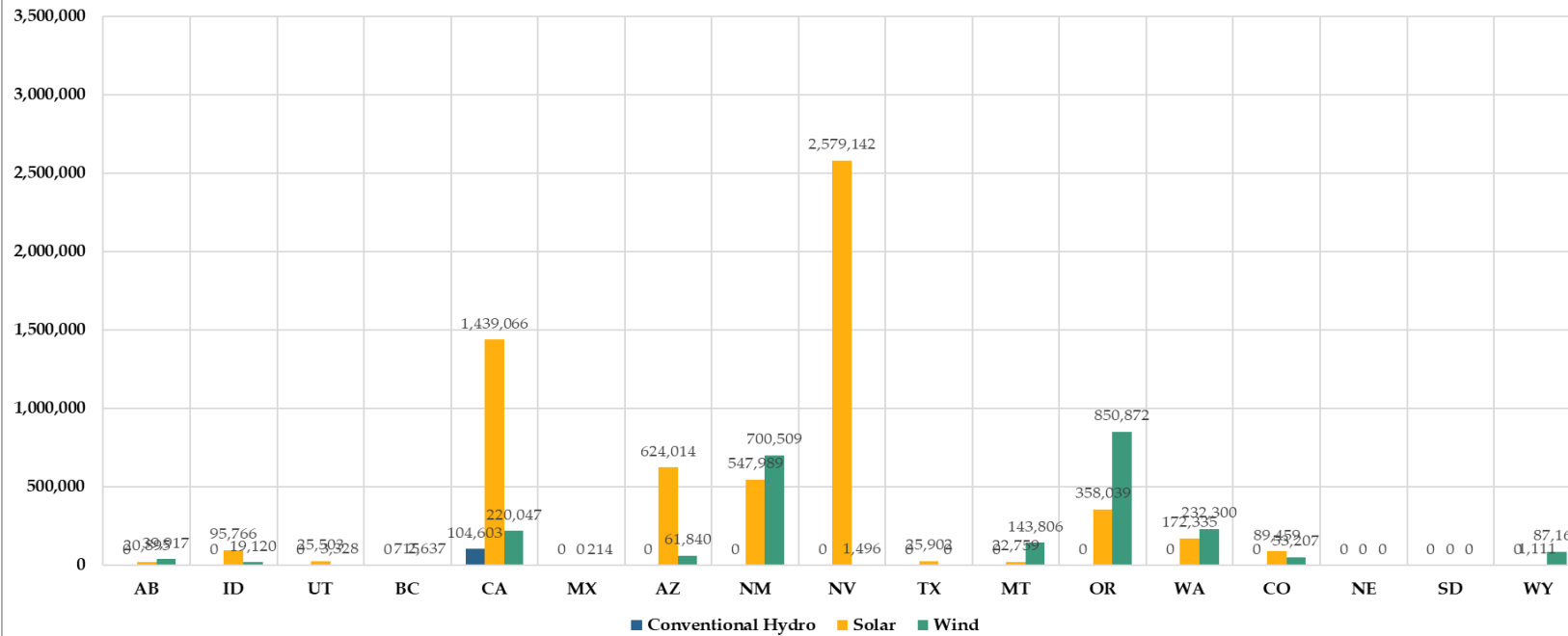
- Review Spreadsheet

P27 Misc-Conditional Constraint

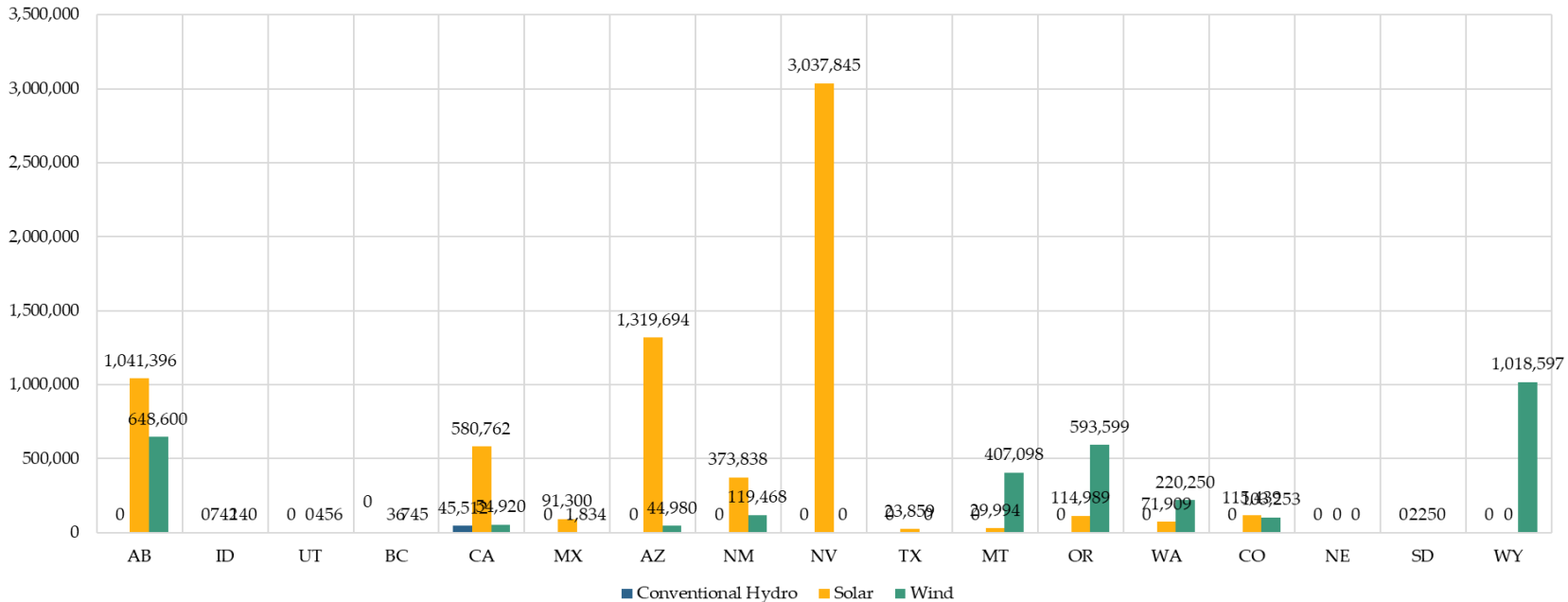
	A	B	C	D	E	F	G	H	I
1	CC Name	If_Then	Equation ID	Element Type	Element Attribute	Element Name	Coefficient	Start Date	End Date
2	IPP_Negative	IF	E1	INTERFACE	VALUE	P27 Intermountain Power Project DC Line	1	1/1/9999	12/31/9999
3	IPP_Negative	THEN	D	INTERFACE	MAX LIMIT MW	P27 Intermountain Power Project DC Line	-2640	1/1/9999	12/31/9999
4	IPP_Positive	IF	E1	INTERFACE	VALUE	P27 Intermountain Power Project DC Line	1	1/1/9999	12/31/9999
5	IPP_Positive	THEN	D	INTERFACE	MIN LIMIT MW	P27 Intermountain Power Project DC Line	1640	1/1/9999	12/31/9999
6	IPP_Zero	IF	E1	INTERFACE	VALUE	P27 Intermountain Power Project DC Line	1	1/1/9999	12/31/9999
7	IPP_Zero	IF	E2	INTERFACE	VALUE	P27 Intermountain Power Project DC Line	1	1/1/9999	12/31/9999
8	IPP_Zero	THEN	D	INTERFACE	MAX LIMIT MW	P27 Intermountain Power Project DC Line	-2399	1/1/9999	12/31/9999
9	IPP_Zero	THEN	D	INTERFACE	MIN LIMIT MW	P27 Intermountain Power Project DC Line	1399	1/1/9999	12/31/9999
10	IPP_Negative	IF	E1	RIGHT HAND SIDE	<=	N/A	-1	1/1/9999	12/31/9999
11	IPP_Positive	IF	E1	RIGHT HAND SIDE	>=	N/A	1	1/1/9999	12/31/9999
12	IPP_Zero	IF	E1	RIGHT HAND SIDE	>	N/A	-1	1/1/9999	12/31/9999
13	IPP_Zero	IF	E2	RIGHT HAND SIDE	<	N/A	1	1/1/9999	12/31/9999

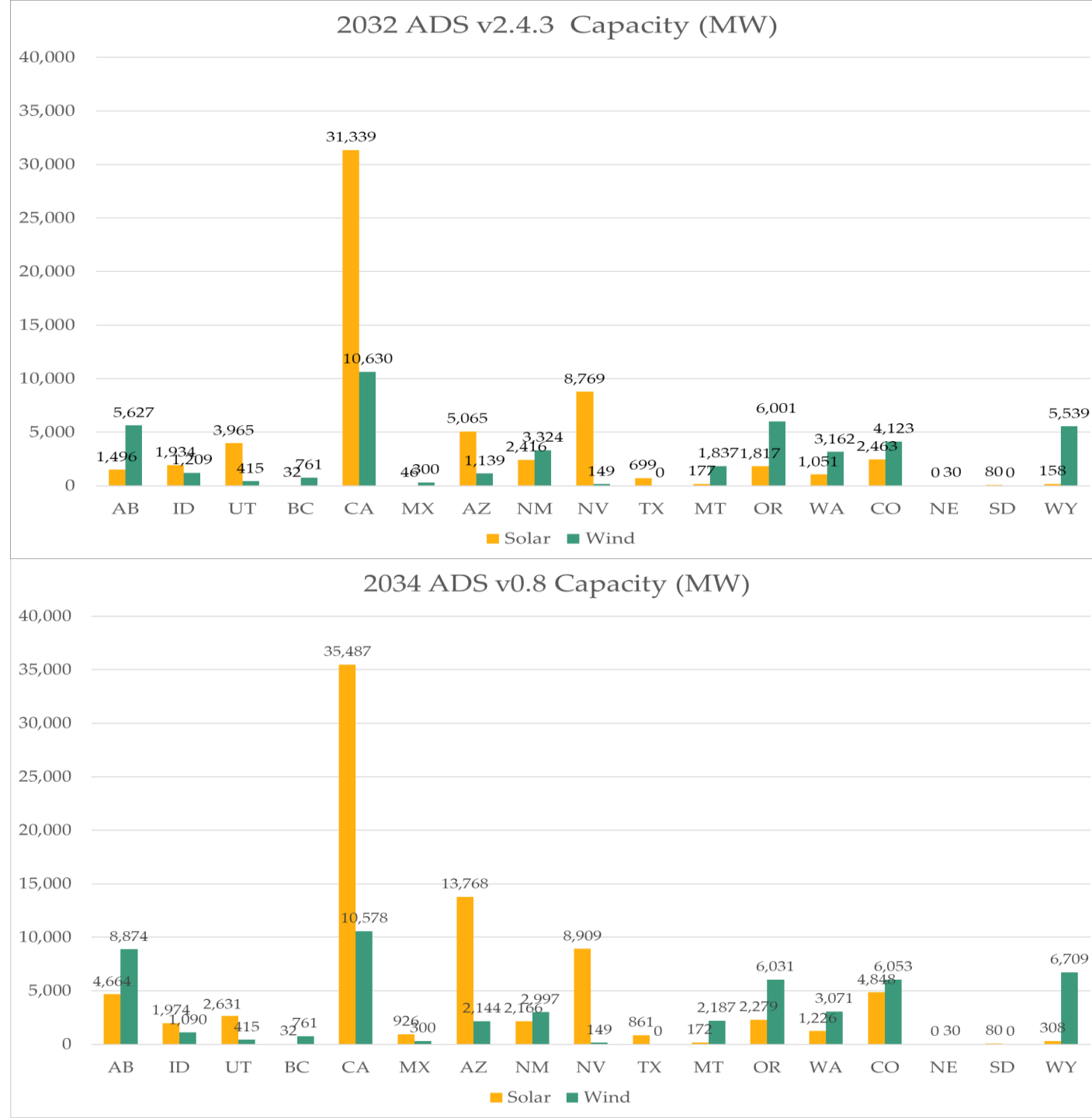
1.4

Annual Dumped Generation (MWh) by State and Type - 2032 ADS v2.4.3

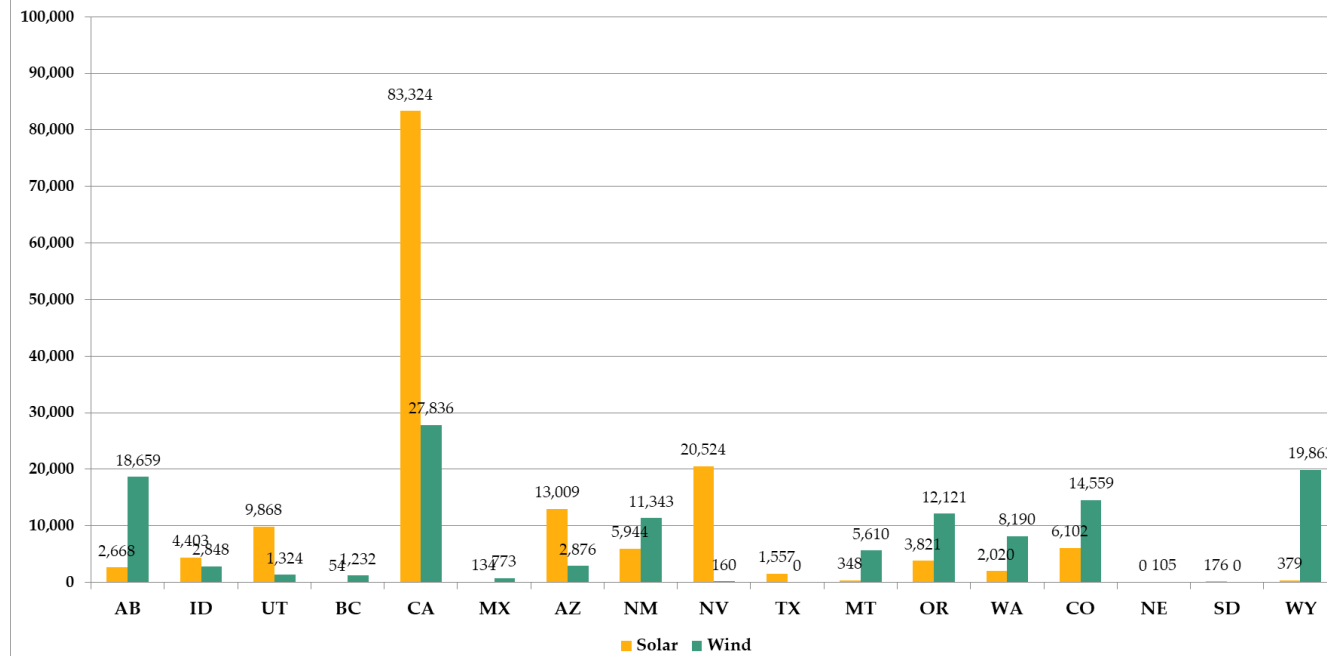


Annual Dumped Generation (MWh) by State and Type - 2034 ADS v0.8

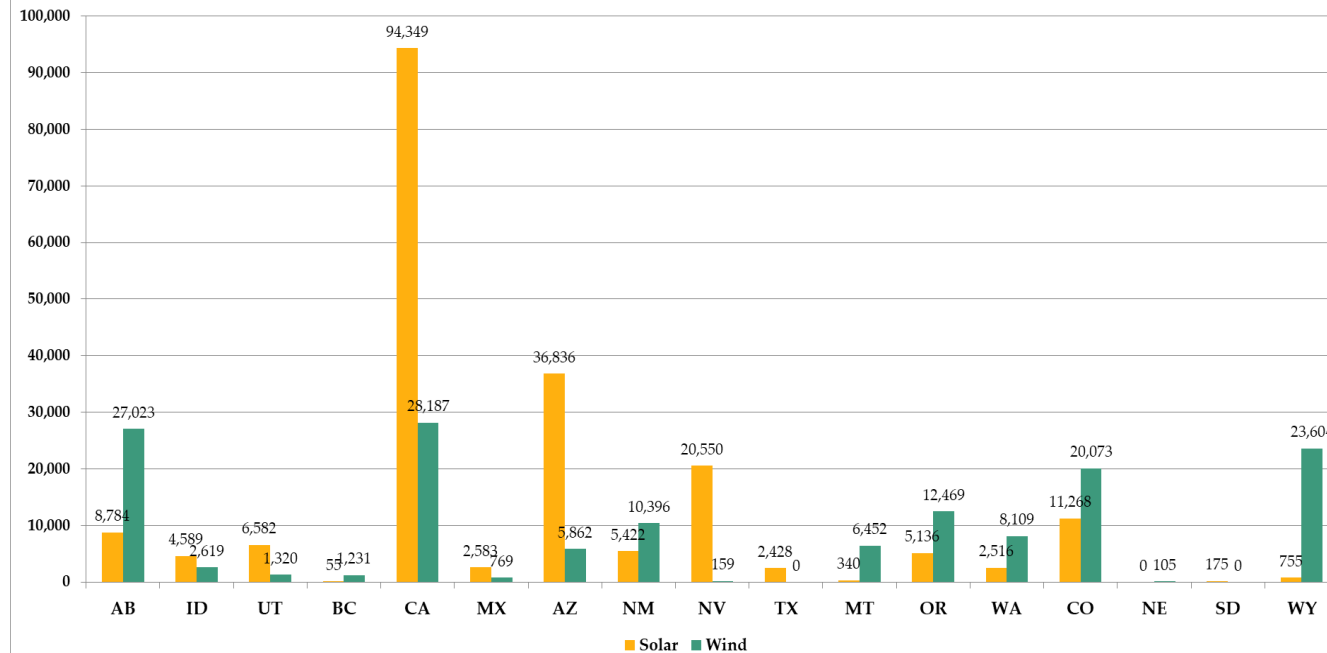




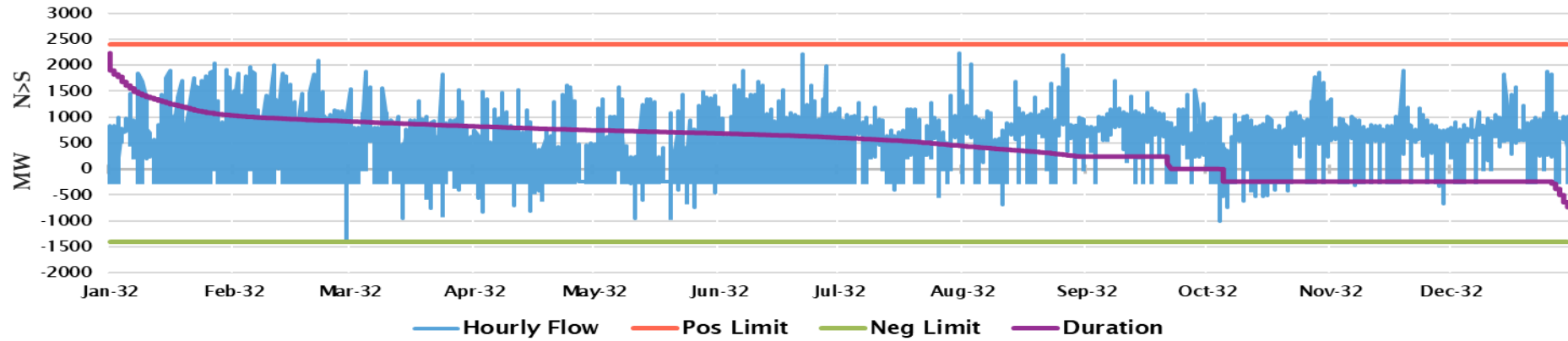
Annual Generation (GWh) by State and Fuel - 2032 ADS v2.4.1



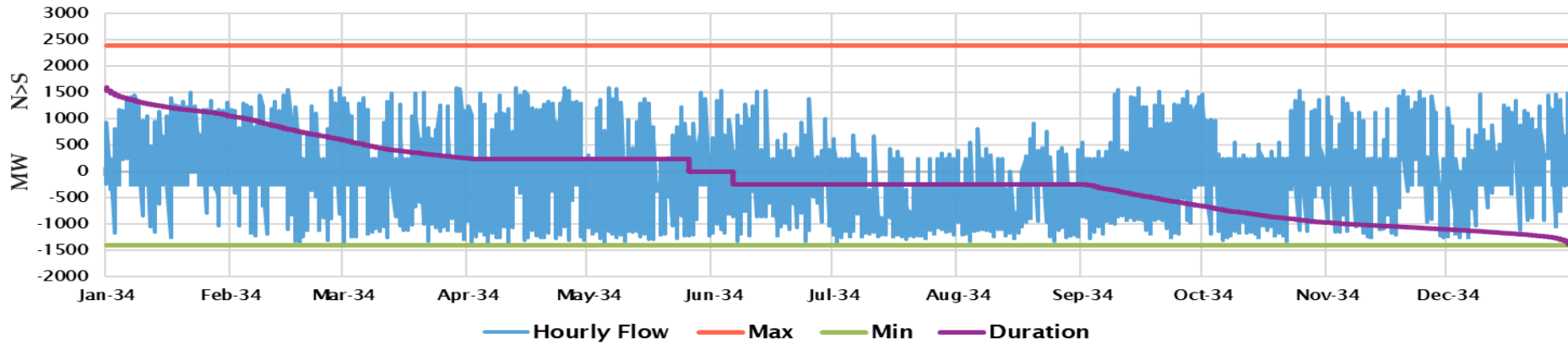
Annual Generation (GWh) by State and Fuel - 2034 ADS v0.8



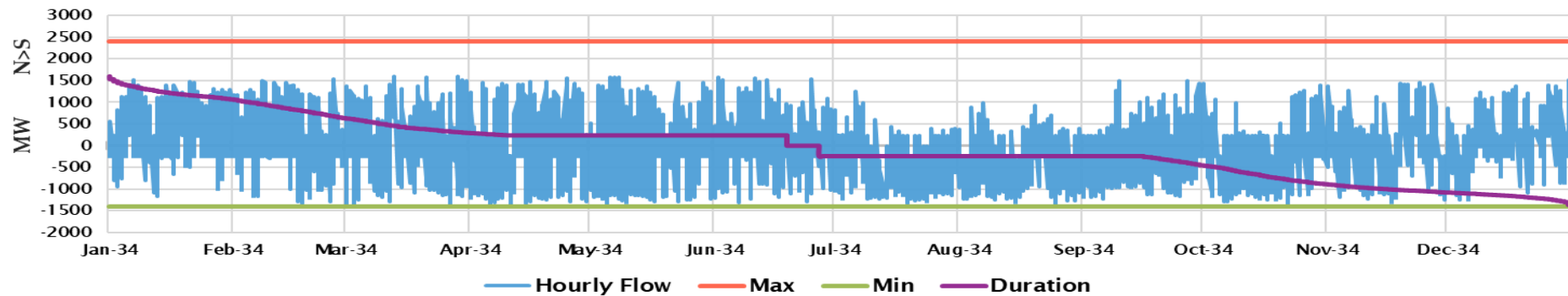
P27 Intermountain Power Project DC Line - 2032ADSv2.4.3 Chronological Hourly



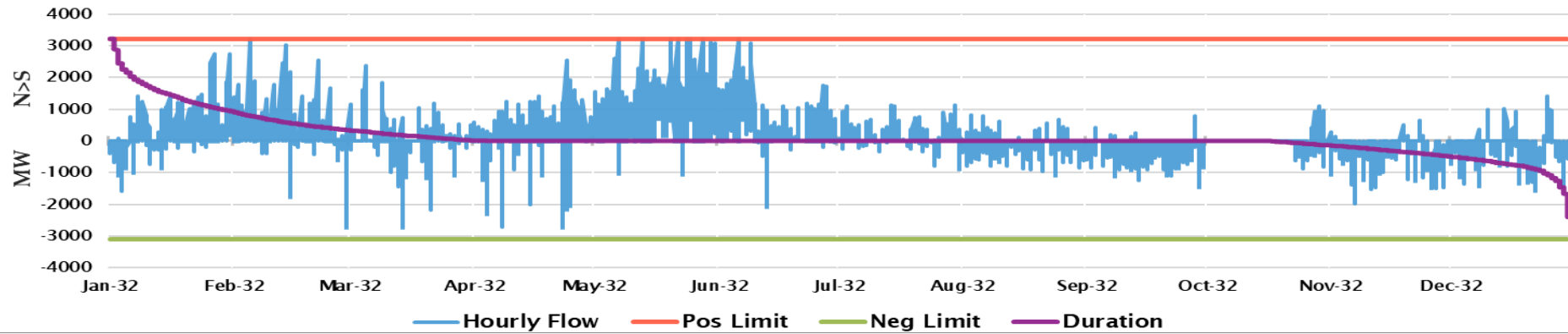
P27 Intermountain Power Project DC Line - 2034ADSv0.8 Chronological Hourly



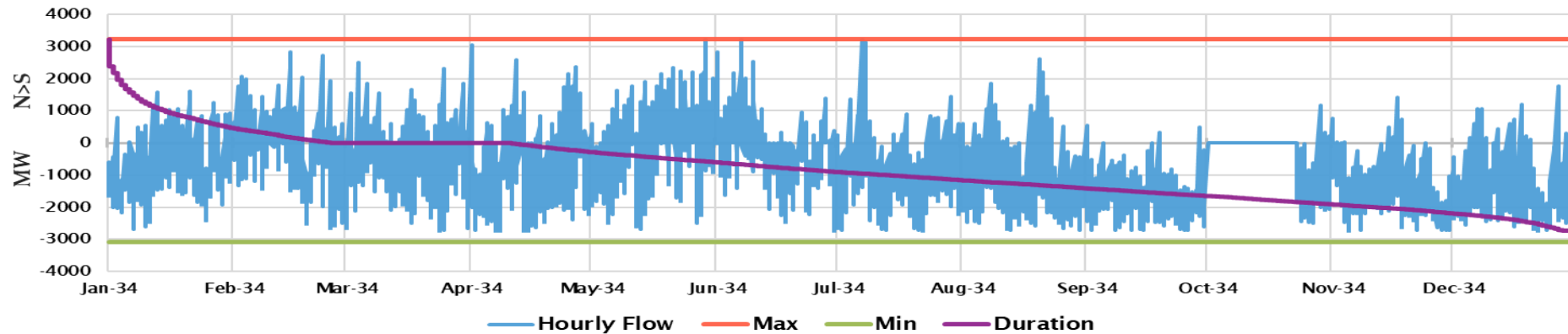
P27 Intermountain Power Project DC Line - 2034ADSv0.8-WA-ORCO20Dollars Chronological Hourly



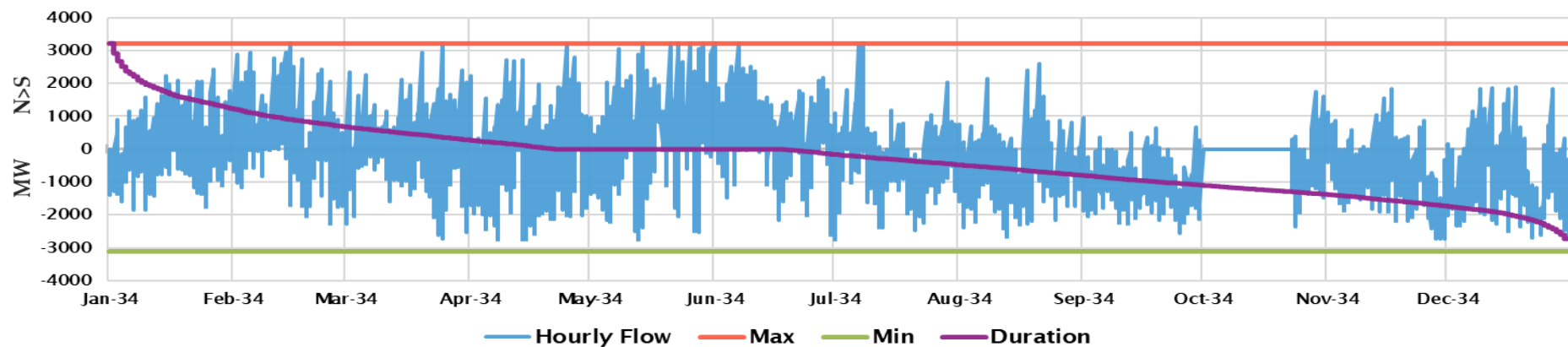
P65 Pacific DC Intertie (PDCI) - 2032ADSv2.4.3Chronological Hourly



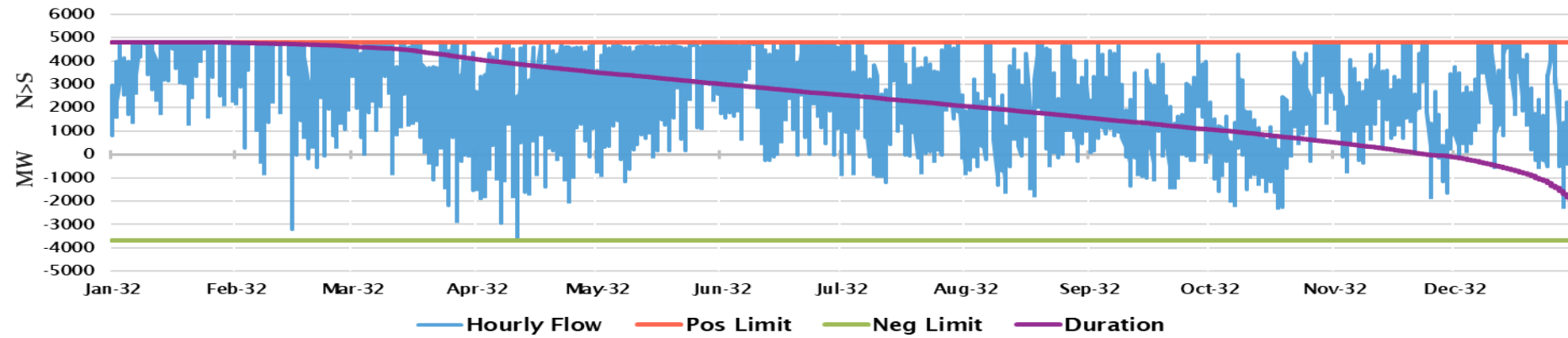
P65 Pacific DC Intertie (PDCI) - 2034ADSv0.8 Chronological Hourly



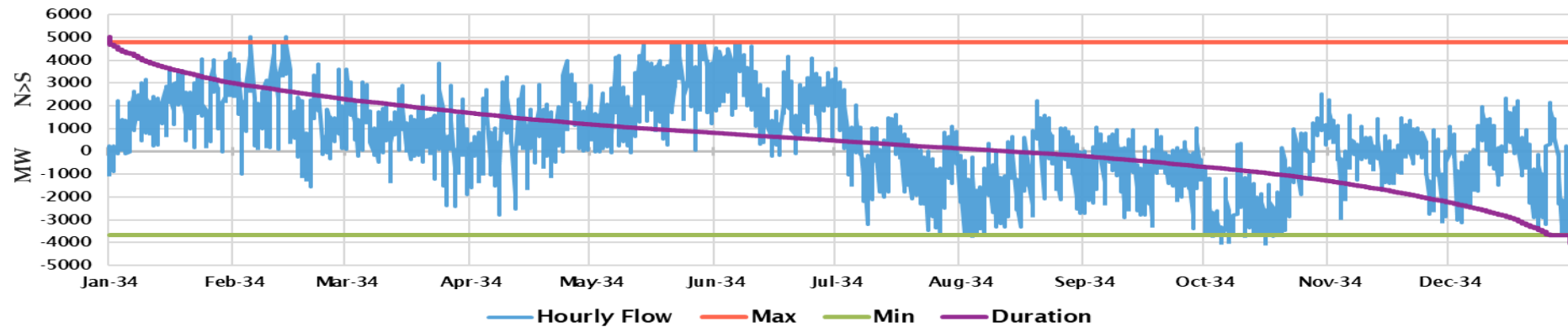
P65 Pacific DC Intertie (PDCI) - 2034ADSv0.8-WA-ORCO2 0Dollars Chronological Hourly



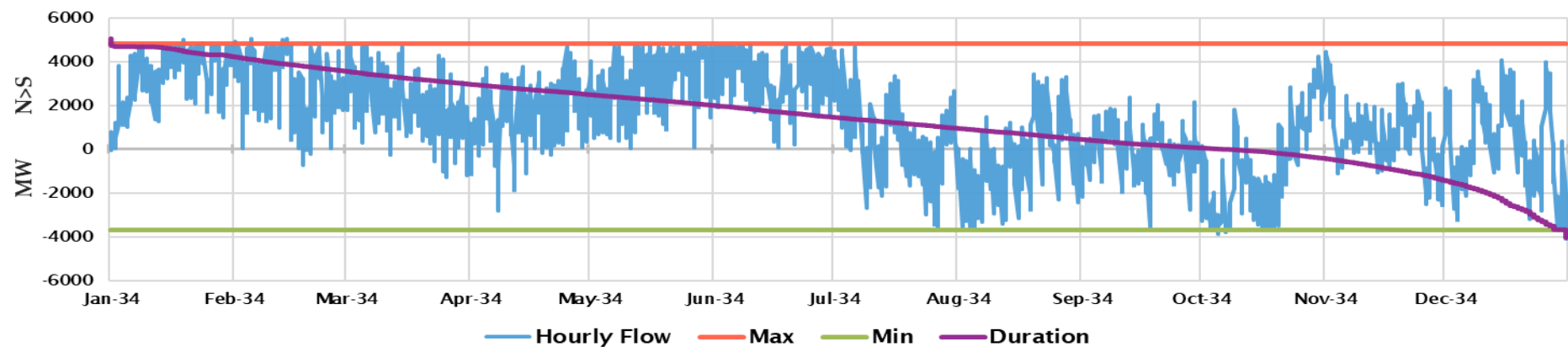
P66 COI - 2032ADSv2.4.3 Chronological Hourly



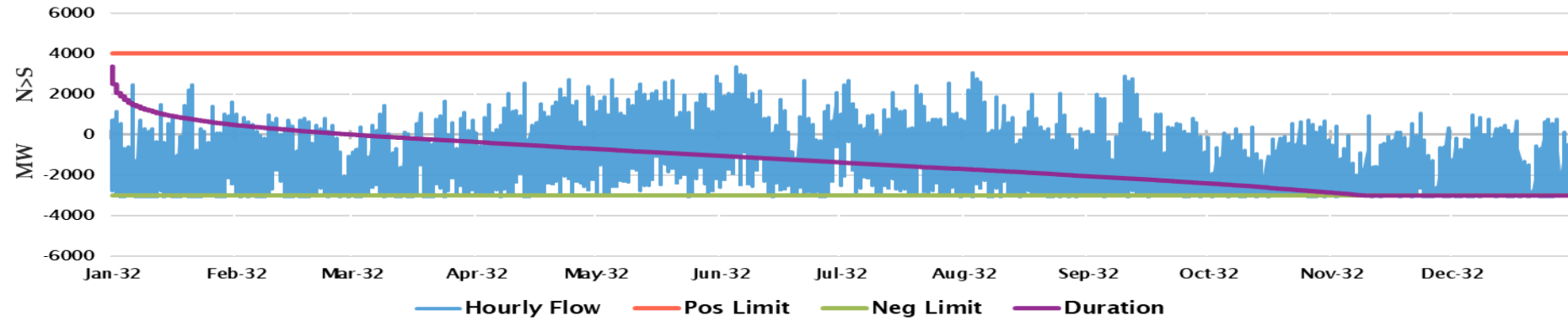
P66 COI - 2034ADSv0.8 Chronological Hourly



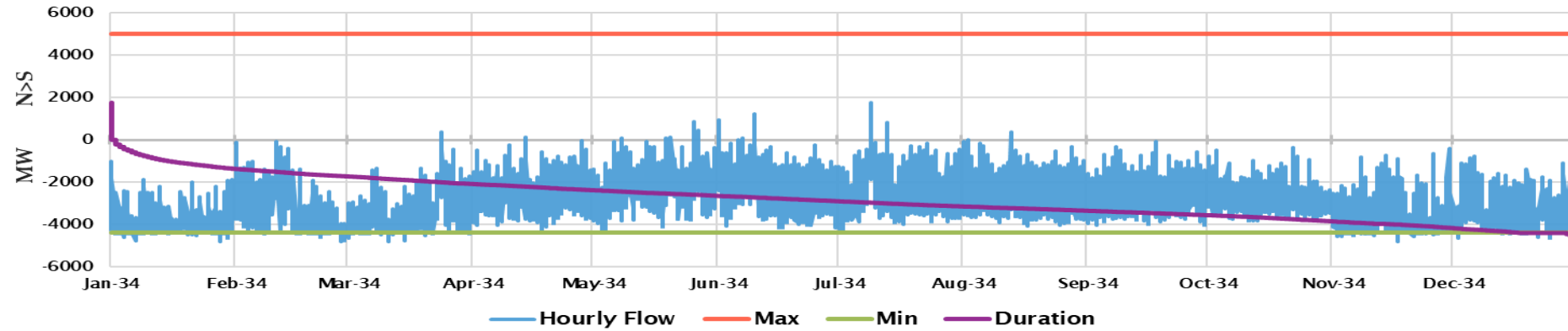
P66 COI - 2034ADSv0.8-WA-ORCO2 0Dollars Chronological Hourly



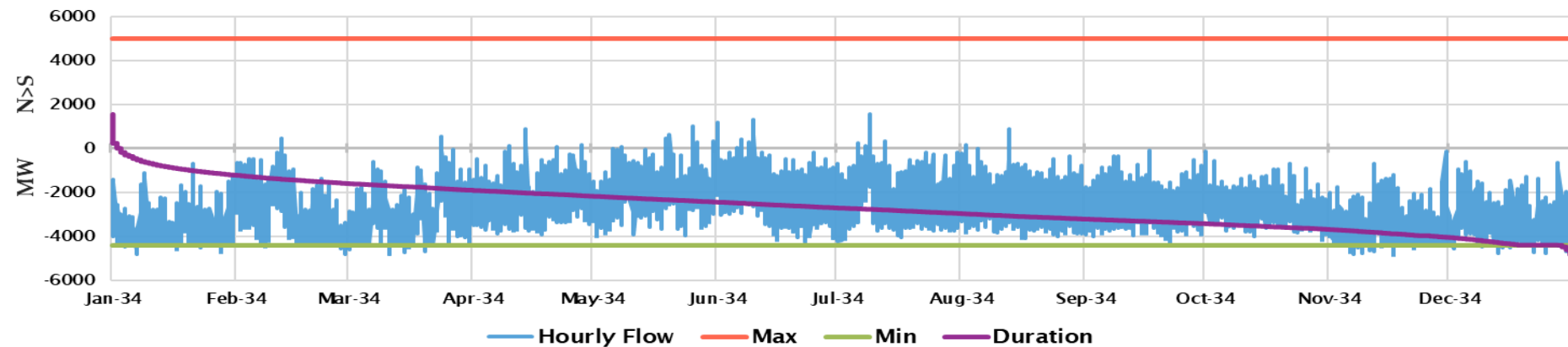
P26 Northern-Southern California - 2032ADSv2.4.3 Chronological Hourly



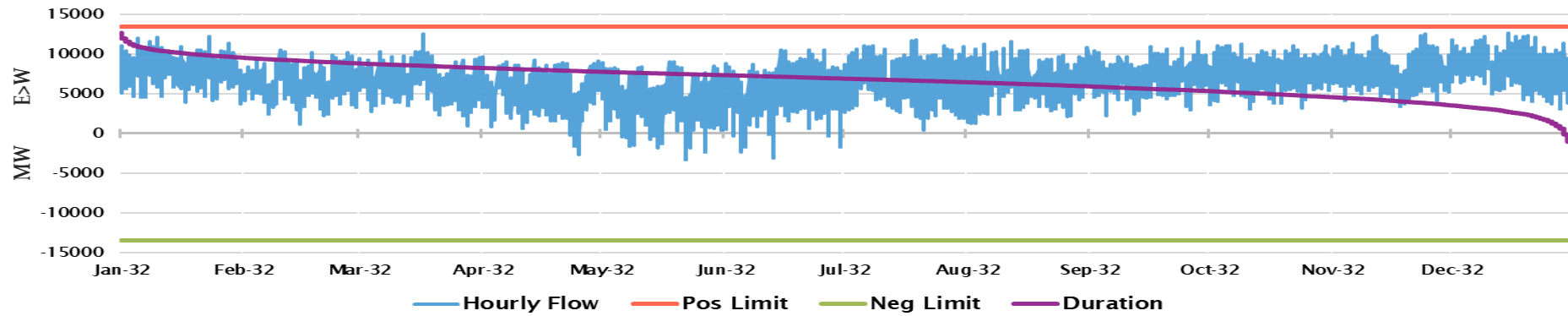
P26 Northern-Southern California - 2034ADSv0.8 Chronological Hourly



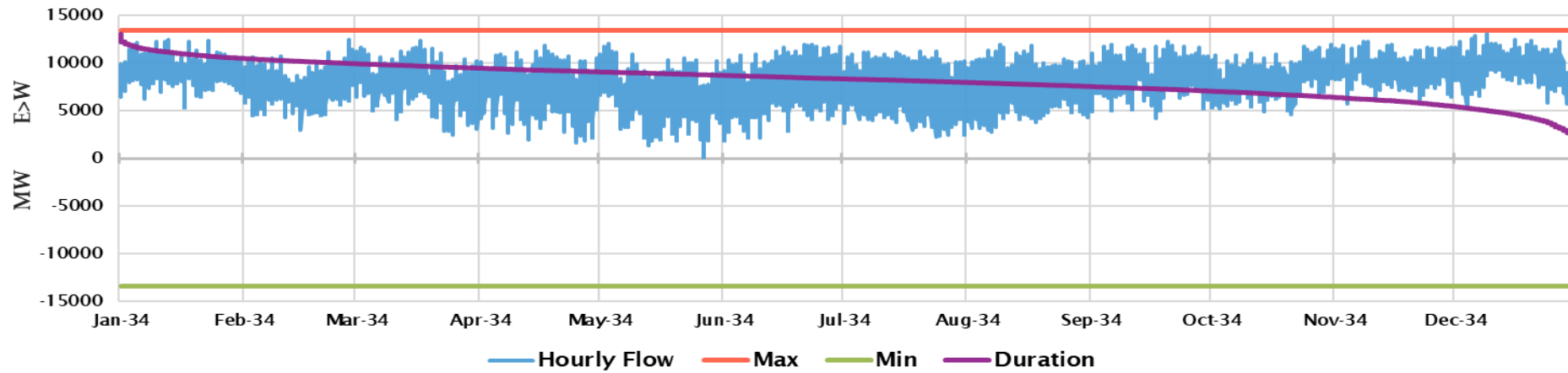
P26 Northern-Southern California - 2034ADSv0.8-WA-ORCO20Dollars Chronological Hourly



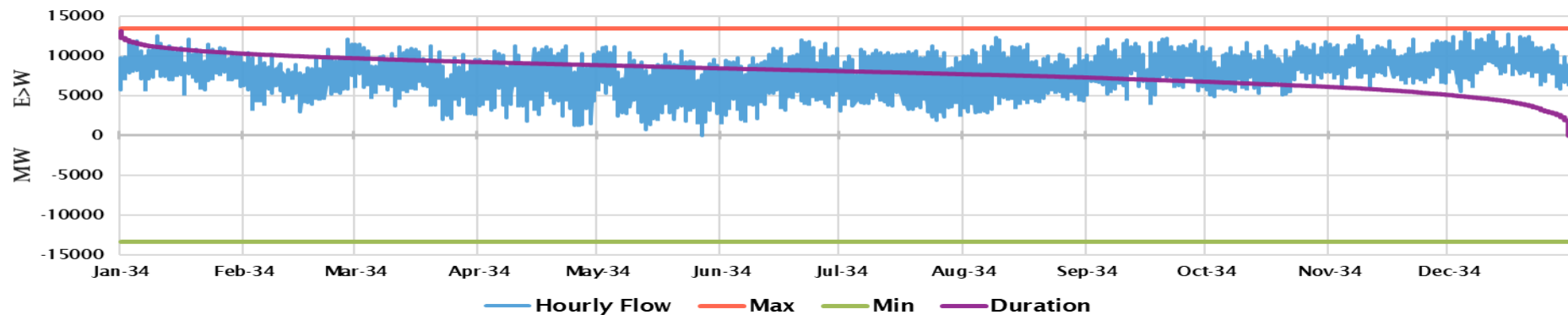
P46 West of Colorado River (WOR) - 2032ADSv2.4.3 Chronological Hourly



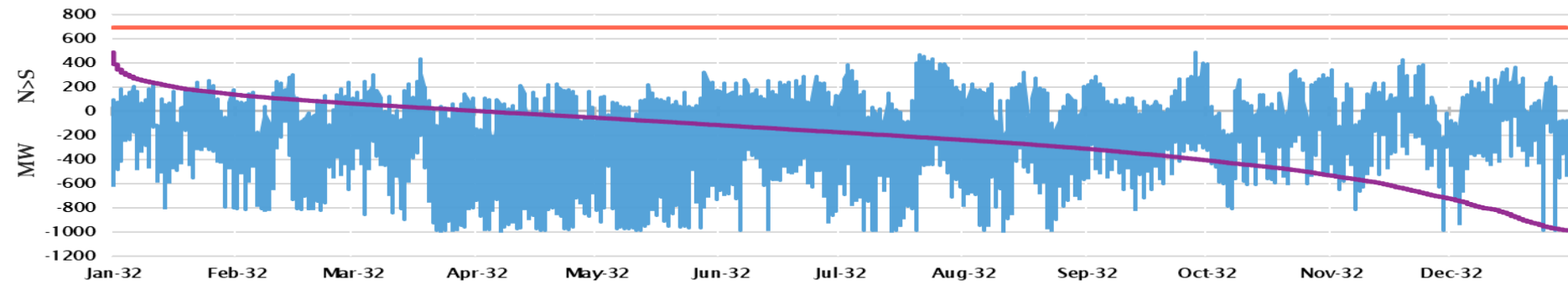
P46 West of Colorado River (WOR) - 2034ADSv0.8 Chronological Hourly



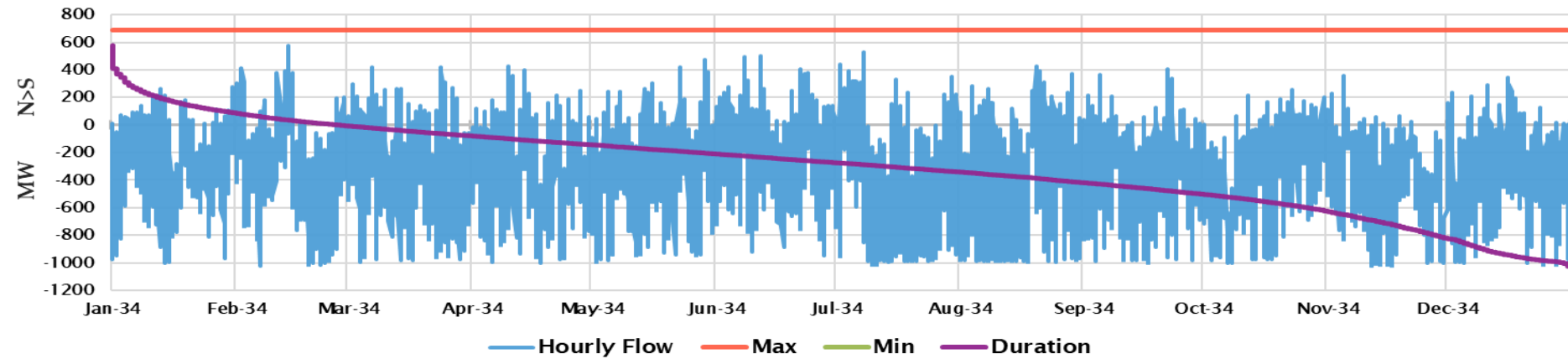
P46 West of Colorado River (WOR) - 2034ADSv0.8-WA-ORCO2 0Dollars Chronological Hourly



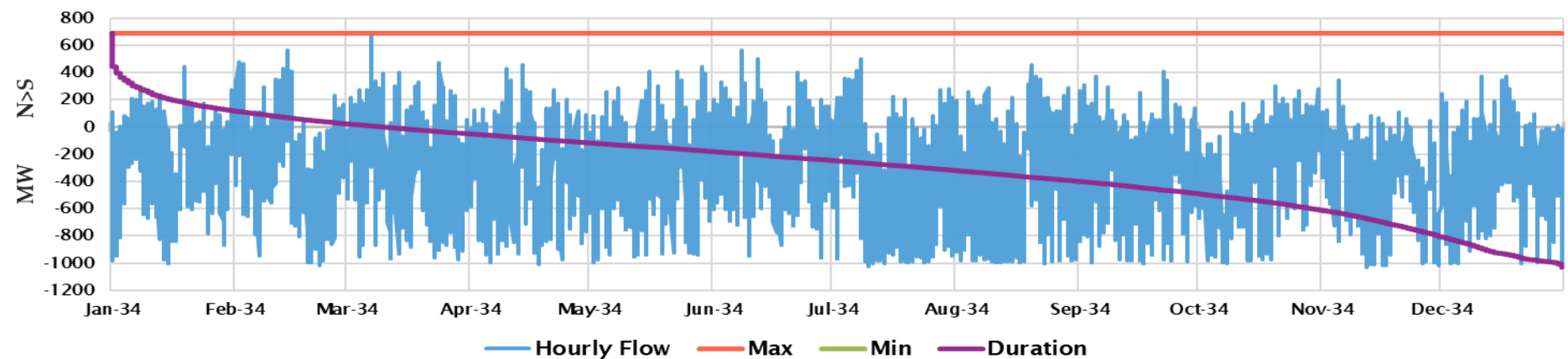
P31 TOT 2A - 2032ADSv2.4.3 Chronological Hourly



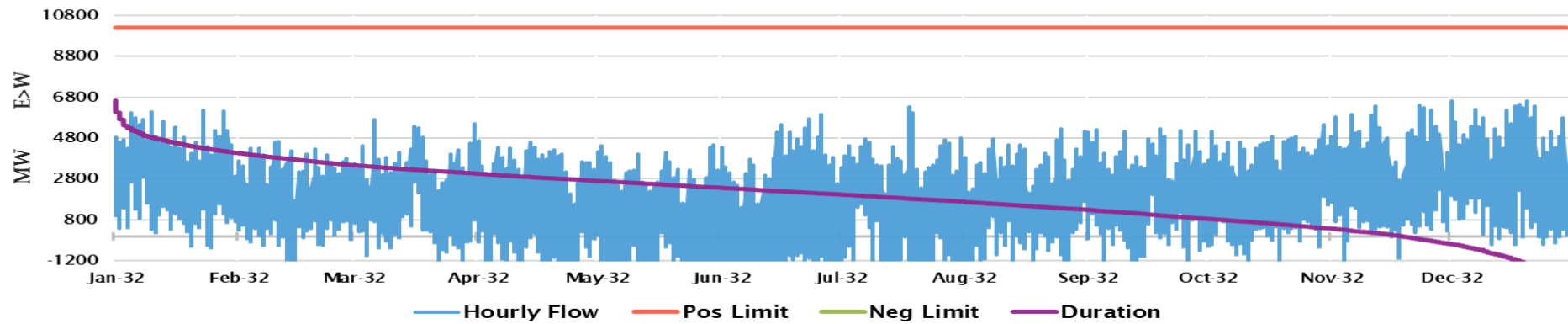
P31 TOT 2A - 2034ADSv0.8 Chronological Hourly



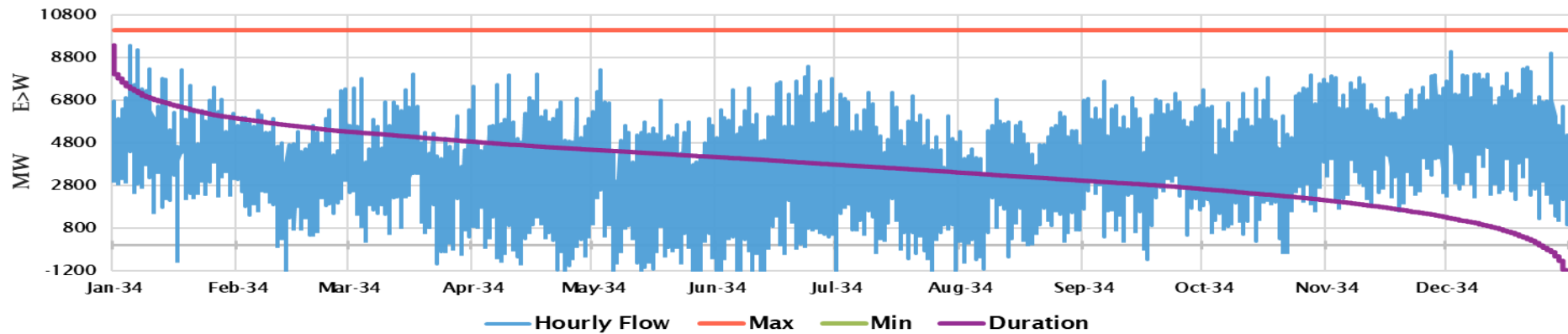
P31 TOT 2A - 2034ADSv0.8-WA-ORCO20Dollars Chronological Hourly



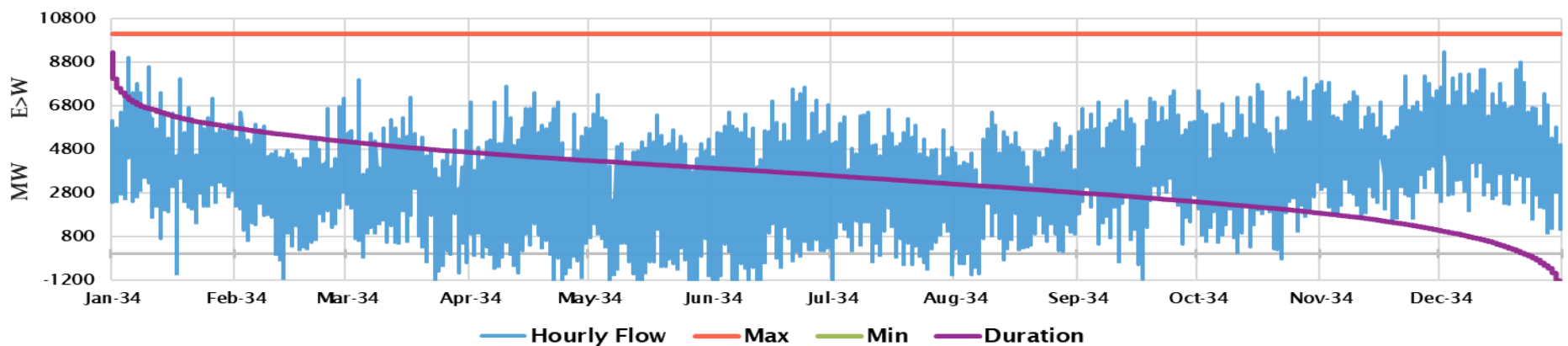
P49 East of Colorado River (EOR) - 2032ADsv2.4.3 Chronological Hourly



P49 East of Colorado River (EOR) - 2034ADsv0.8 Chronological Hourly



P49 East of Colorado River (EOR) - 2034ADsv0.8-WA-ORCO20Dollars Chronological Hourly



2034 ADS V1 Final version

- 2034_ADS_PCM_V1(2023LnR)_V1.0
- 2034_ADS_PCM_2.4.3_V0.8 Plus the following updates:
 - Changed bus 73477 from PSCO to WACM
 - Updated naming convention, but not for units in gen dist
 - If we had unit previously aggregated but is not aggregated in new submission, it is still aggregated in our genlist and uses old naming convention.
 - Removed FosterWhlrrCC-Total (Status set to 'false')

Final Version

