



RELIABILITY IN THE WEST

A DISCUSSION SERIES





Reliability in the West Discussion Series

June 5, 2024

Travis English
Interim Manager,
Communications

Antitrust Policy

- All WECC meetings are conducted in accordance with the WECC Antitrust Policy and the NERC Antitrust Compliance Guidelines
- All participants must comply with the policy and guidelines
- This meeting is public—confidential or proprietary information should not be discussed in open session

Antitrust Policy

- This webinar is being recorded and will be posted publicly
- By participating, you give your consent for your name, voice, image, and likeness to be included in that recording
- WECC strives to ensure the information presented today is accurate and reflects the views of WECC
- However, all interpretations and positions are subject to change
- If you have any questions, please contact WECC's legal counsel



Summer Assessment

June 5, 2024

Kris Raper

Vice President, Strategic
Engagement and External
Affairs



2024 Summer Reliability Outlook for the Western Interconnection

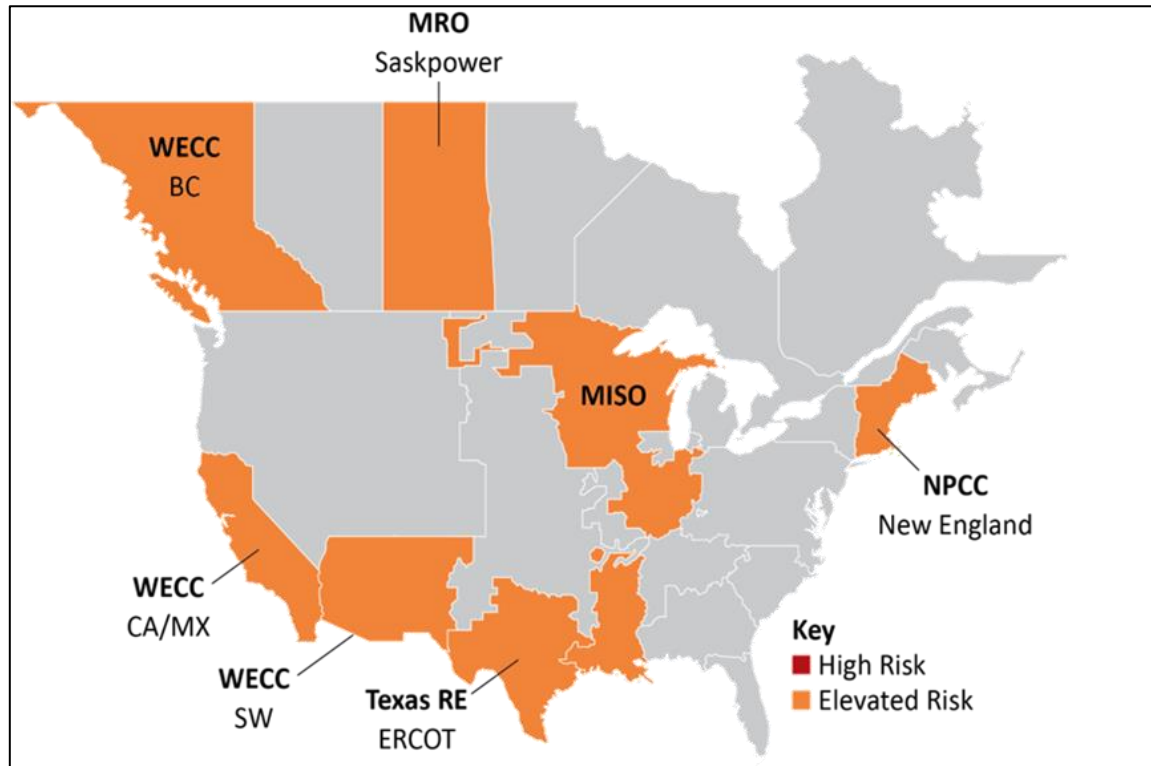
June 5, 2024

Matt Zapotocky
Senior Reliability
Assessments Engineer

Summer Challenges and Reliability Risks

- Above-normal Temperatures
- Drought
- Wildfires
- Supply Chain
- Cyber- and Physical Security
- *Looking Ahead:* Inverter-based Resource (IBR) Expansion

NERC 2024 Summer Reliability Assessment

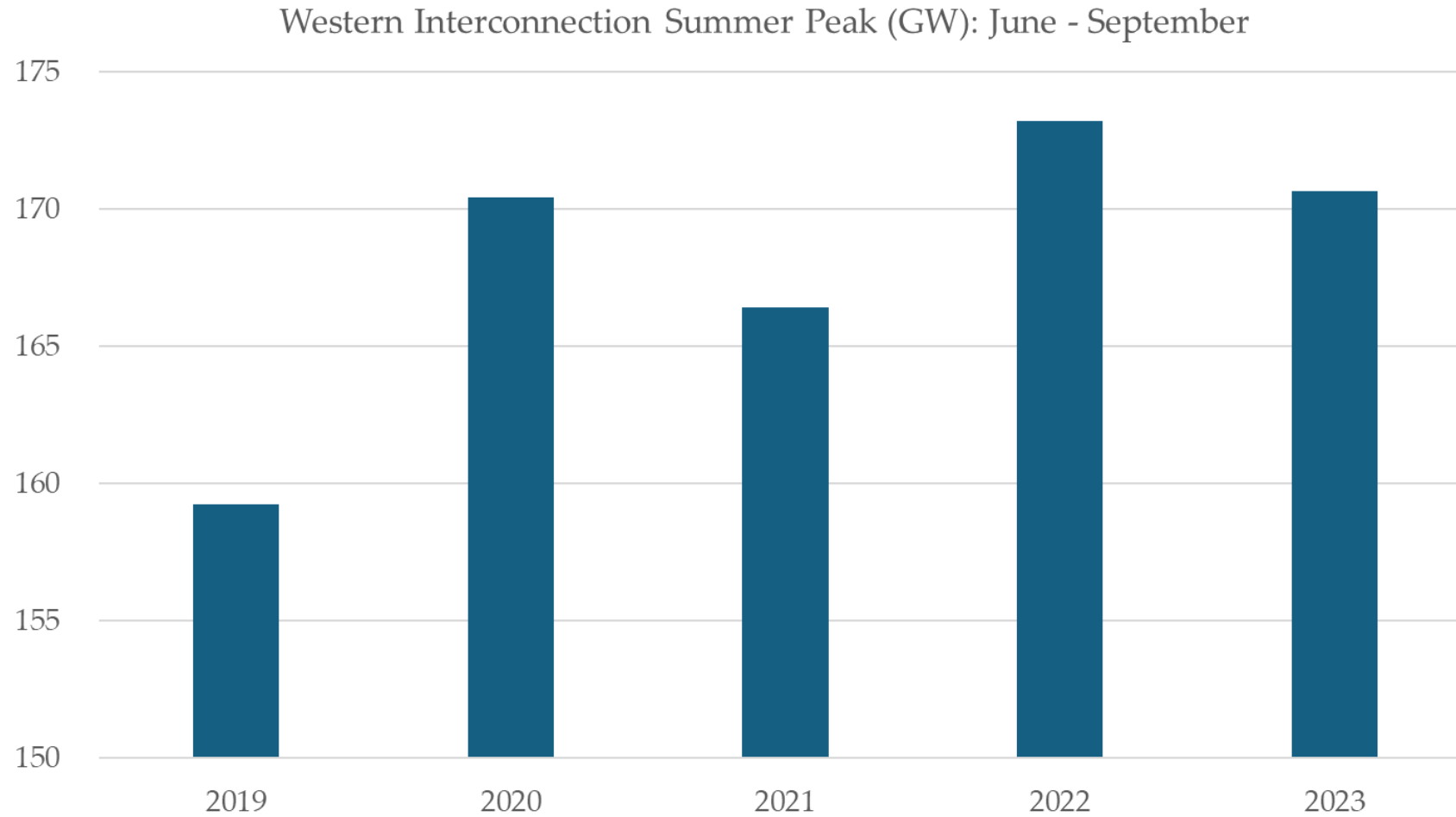


- All areas have adequate resources for normal summer demand
- British Columbia (BC), California/Mexico (CA/MX), and the Southwest (SW) have “Elevated Risk”

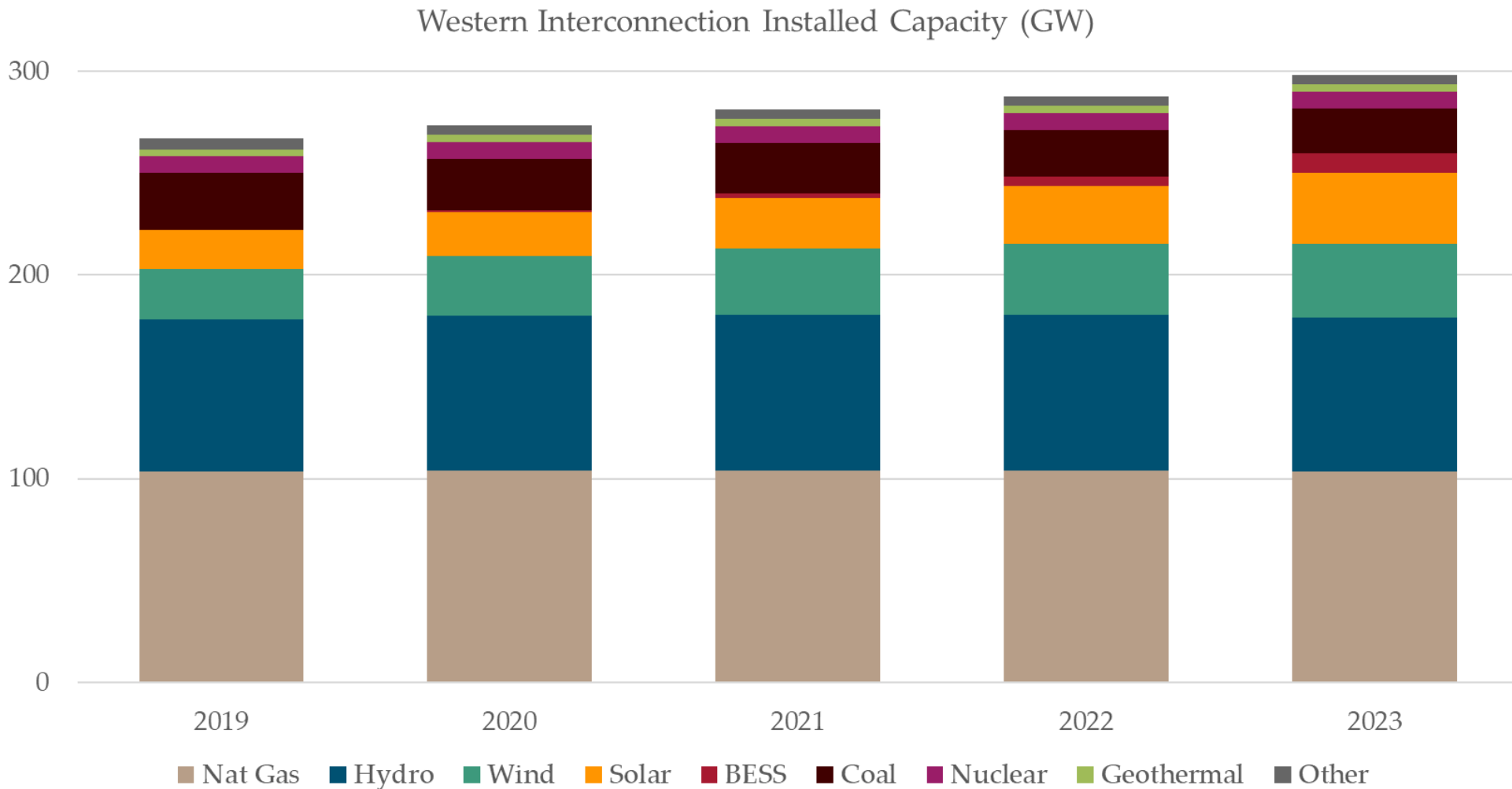
Seasonal Risk Assessment Summary

High	Potential for insufficient operating reserves in normal peak conditions
Elevated	Potential for insufficient operating reserves in extreme conditions
Normal	Sufficient operating reserves expected

Summer Peak

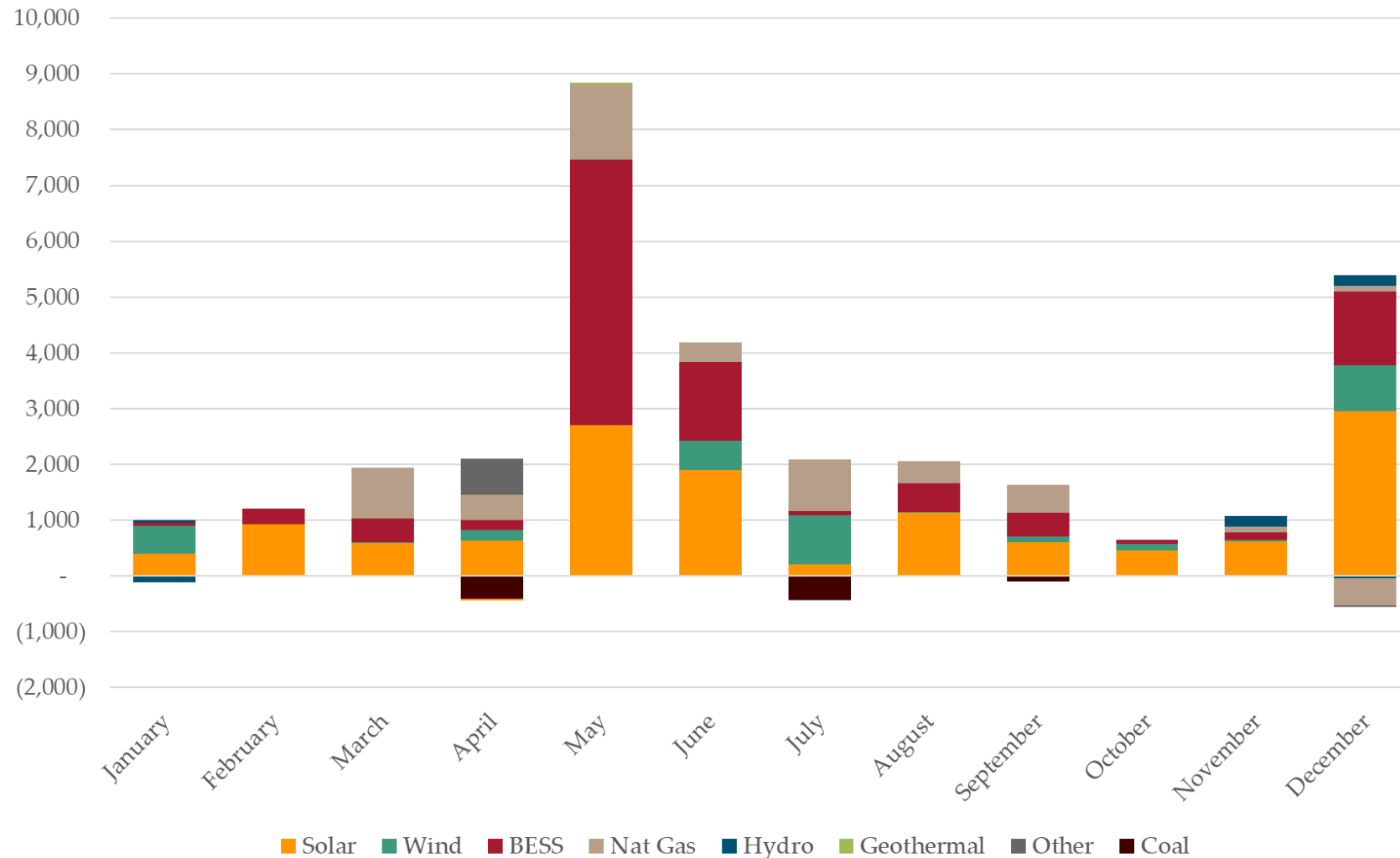


Capacity



Planned Additions & Retirements

2024 Western Interconnection Proposed Resource Additions & Retirements (MW)



Summer Assessment Panel

Panelists:

- Bryon Domgaard, Senior Performance Analyst
- Katie Rogers, Manager, Reliability Assessments
- Matt Zapotocky, Senior Reliability Assessments Engineer



Electric Reliability and Security for the West

www.wecc.org