



PCDS Meeting

November 20, 2024

Jon Jensen

WECC

PCDS Action Items

- PNNL Hydro
 - Received Monthly
 - Weekly in progress
- Received new SunZia shapes
 - Need to implement
- Comparing hydro capacities 2032 vs. 2034 (BC and BPA)
 - BC correction from Mica due to a repower instead of an addition
 - BPA differences in L&R capacities from year to year

Updates to the 2034 ADS case

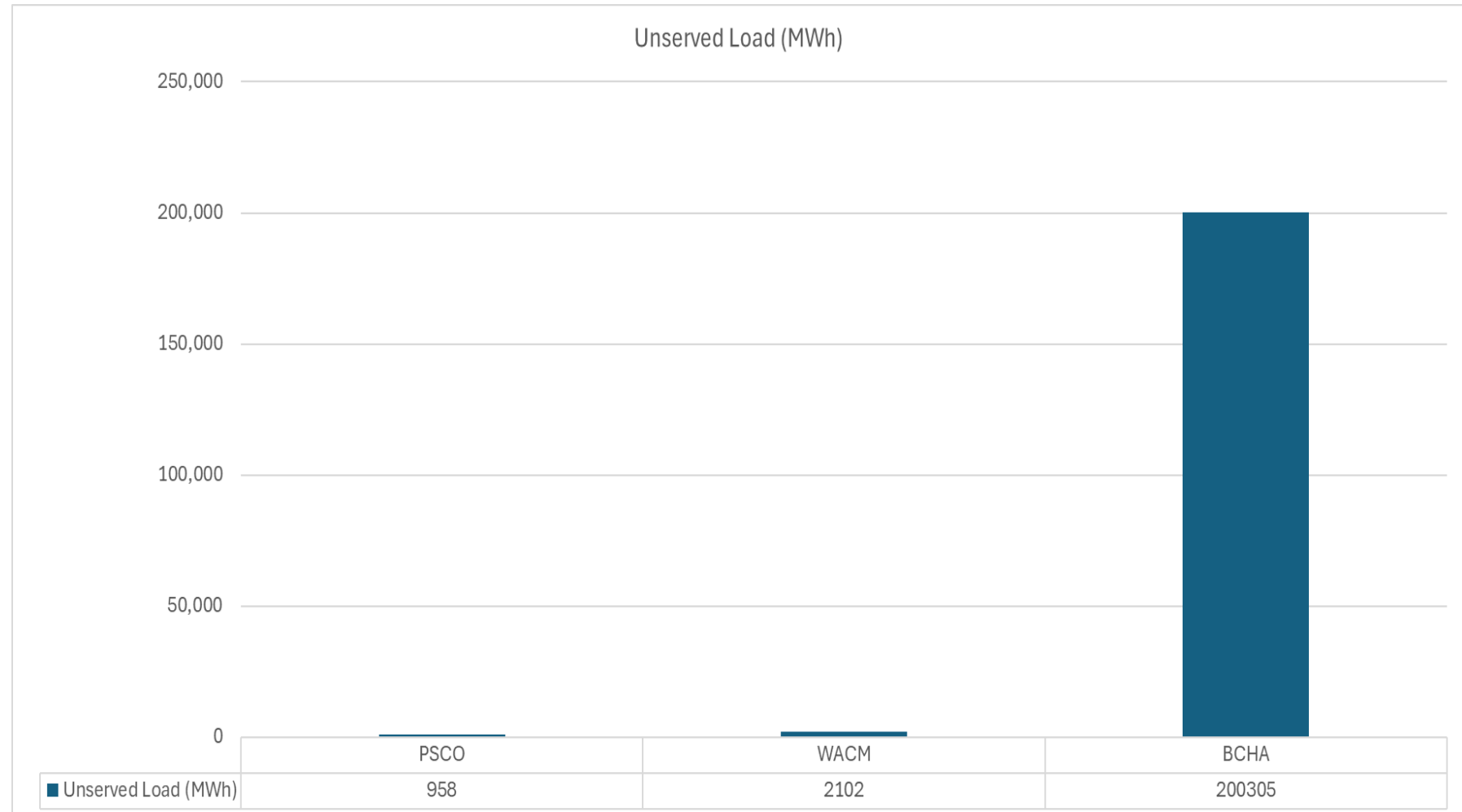
- Updated thermal table, fuel type assignments, etc.
- Hybrid unit relocations
- Relocated Wyoming generic unit to Wyoming
- AB32
 - Update with SunZia and TransWest Express projects and to include generic units
 - Idaho
 - Eldorado
 - NM PV
 - Wyoming
- Relocate Mexicali units
- DR BTM Status updated to true
- Minor SunZia capacity update – Done
- Generic Heat Rate Polymixin update
- Monitored lines update
 - Area to Area, Region to Region, 200kv and above
- CO2 updates System. State (In one or other, not both), Geo Bio Exempt from CO2
- Monthly Hydro PNNL update
- Shapes for hydro without Monthly weekly

2034 ADS V2 11-15

(Posted to PCDS Team Site)

Unserved Load-11-15 Case

V2 No Tier 3 has
0 unserved load

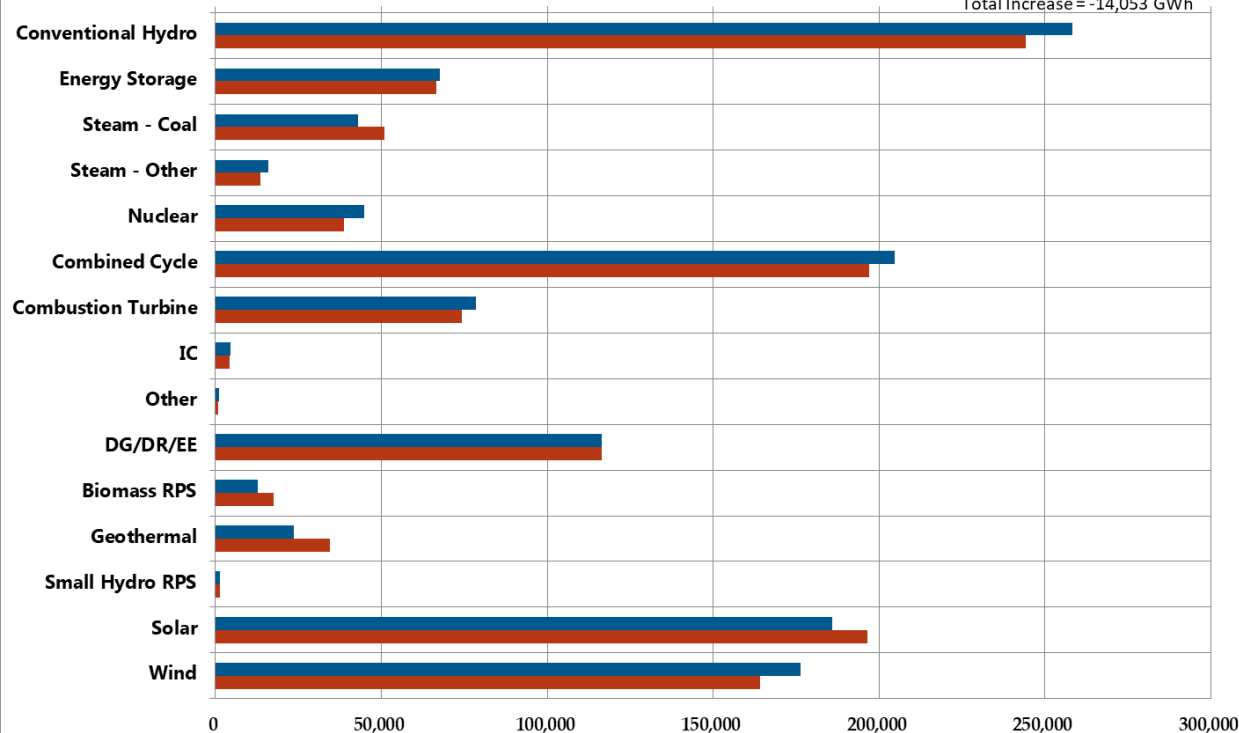


Annual Energy

Annual Generation by Category (GWh)

■ 2034 ADS V2_NoT3 ■ 2034 ADS V2_11-15

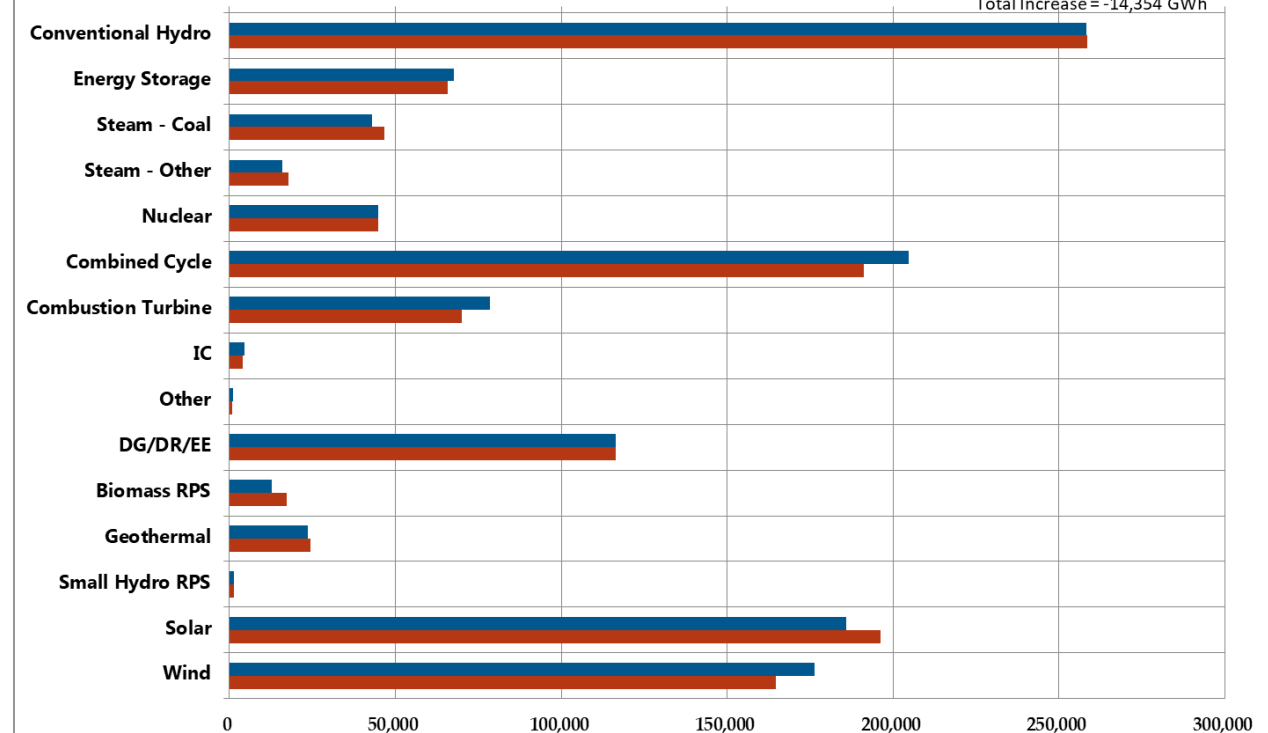
Total Increase = -14,053 GWh



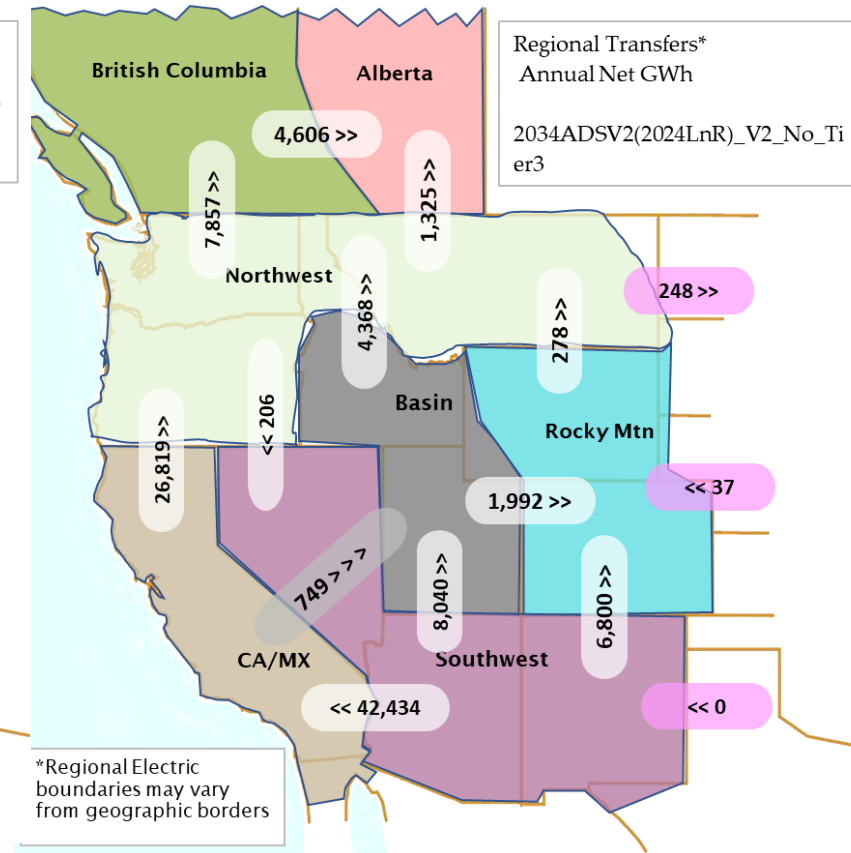
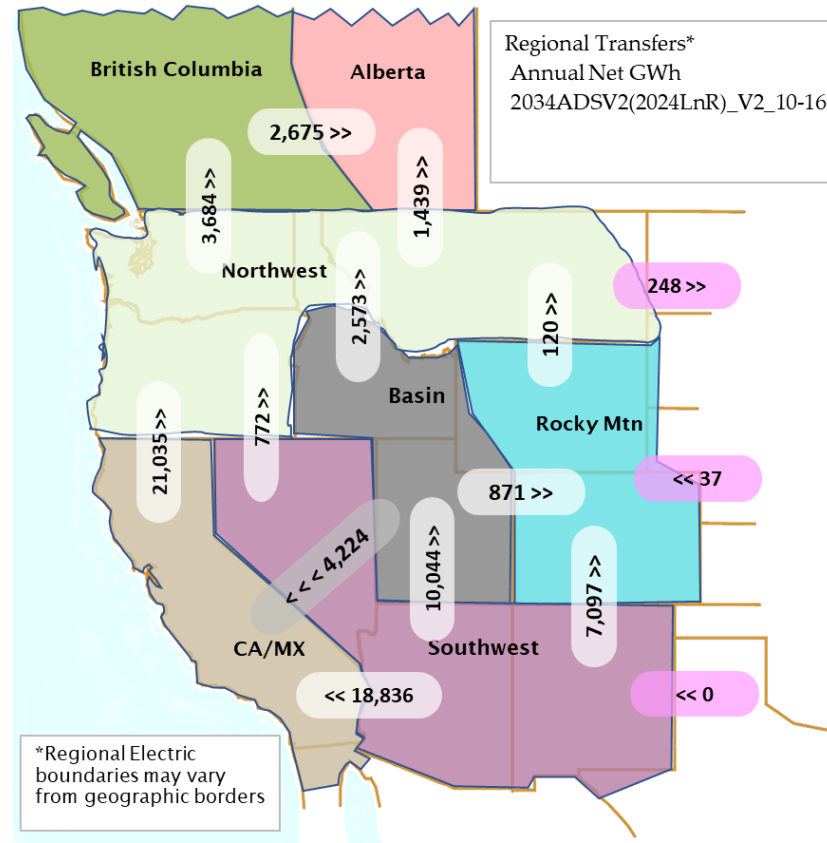
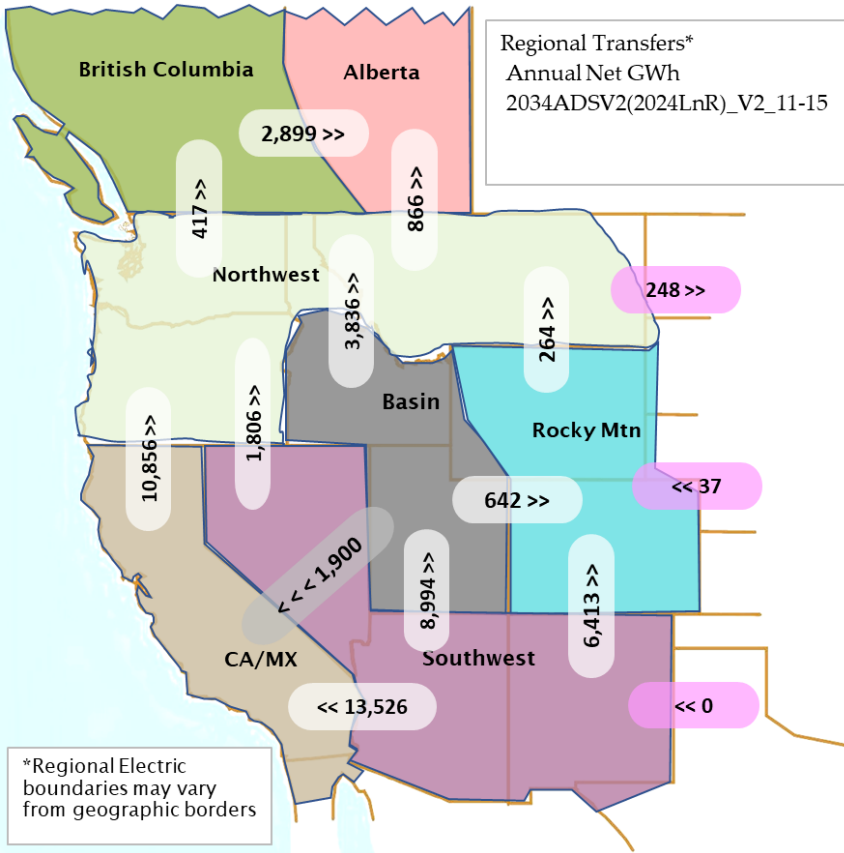
Annual Generation by Category (GWh)

■ 2034 ADS V2_NoT3 ■ 2034 ADS V2_10-16

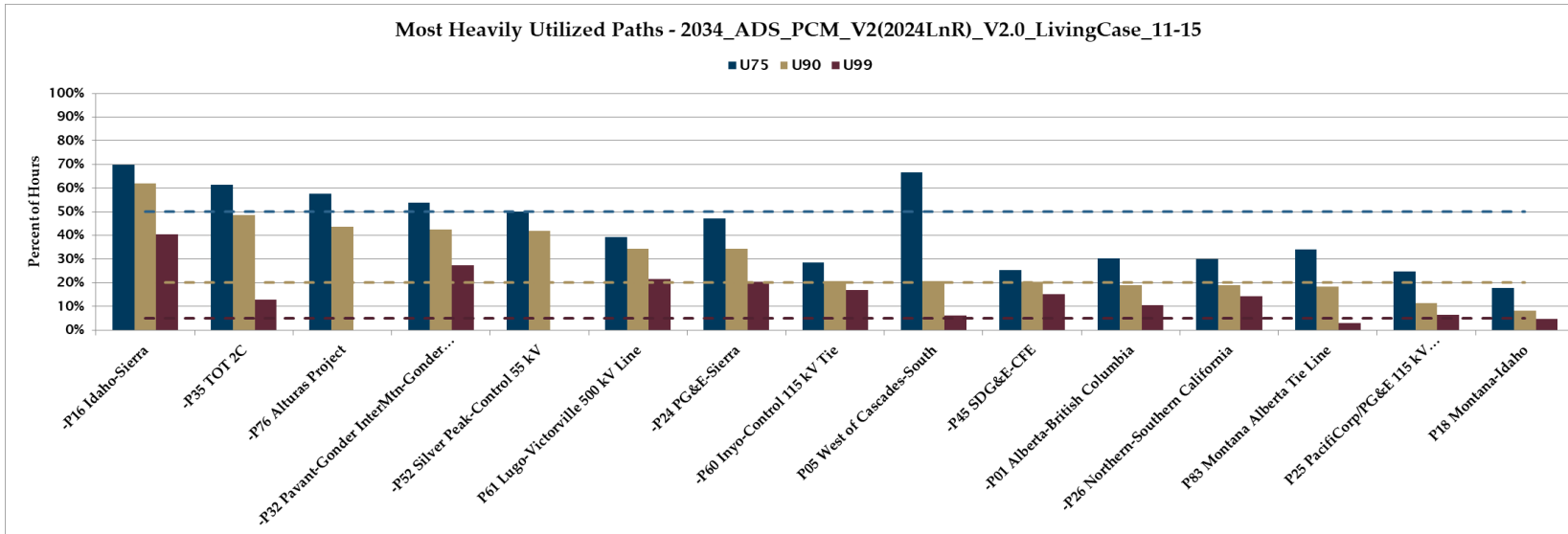
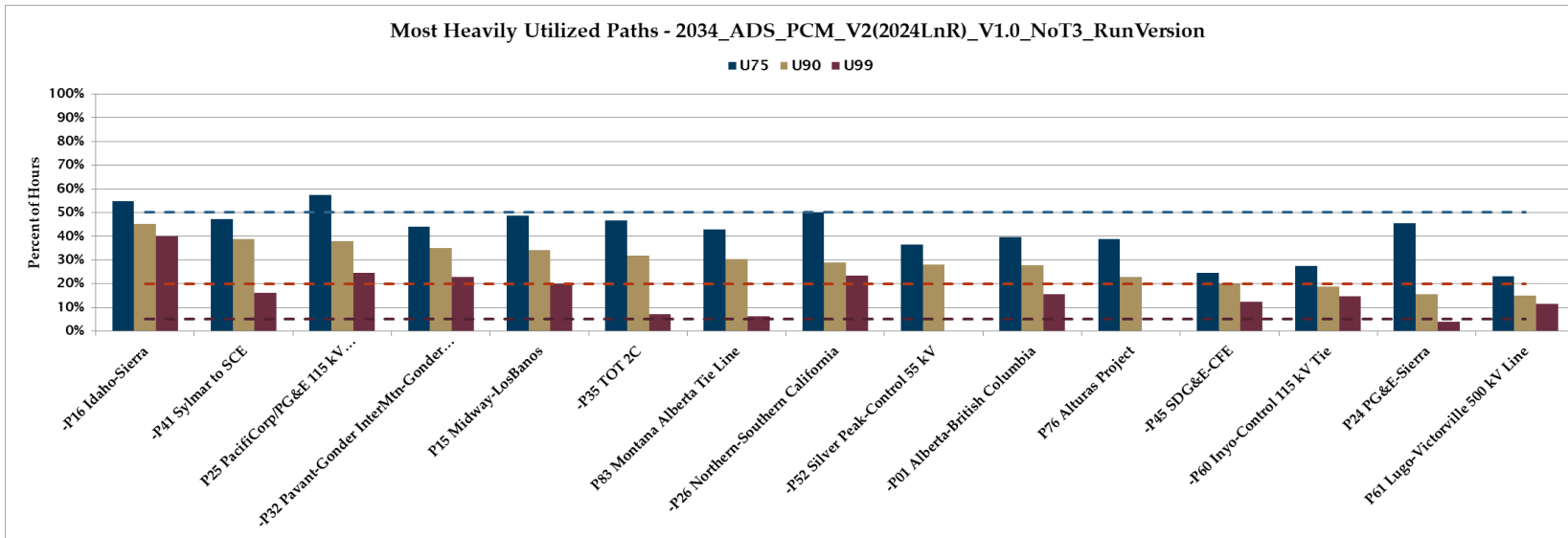
Total Increase = -14,354 GWh



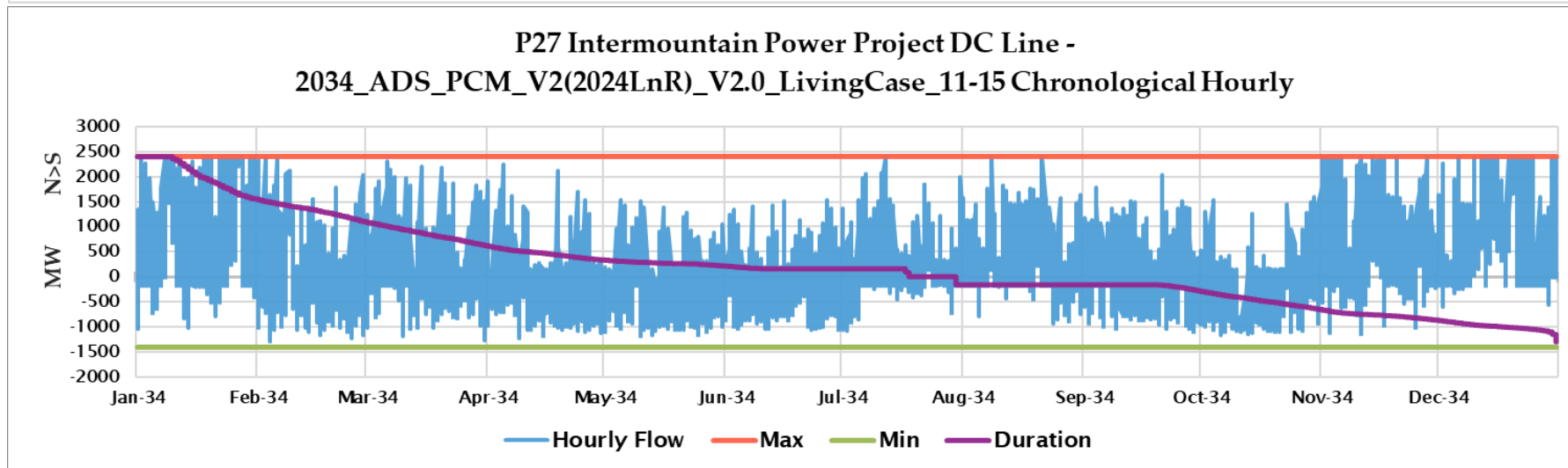
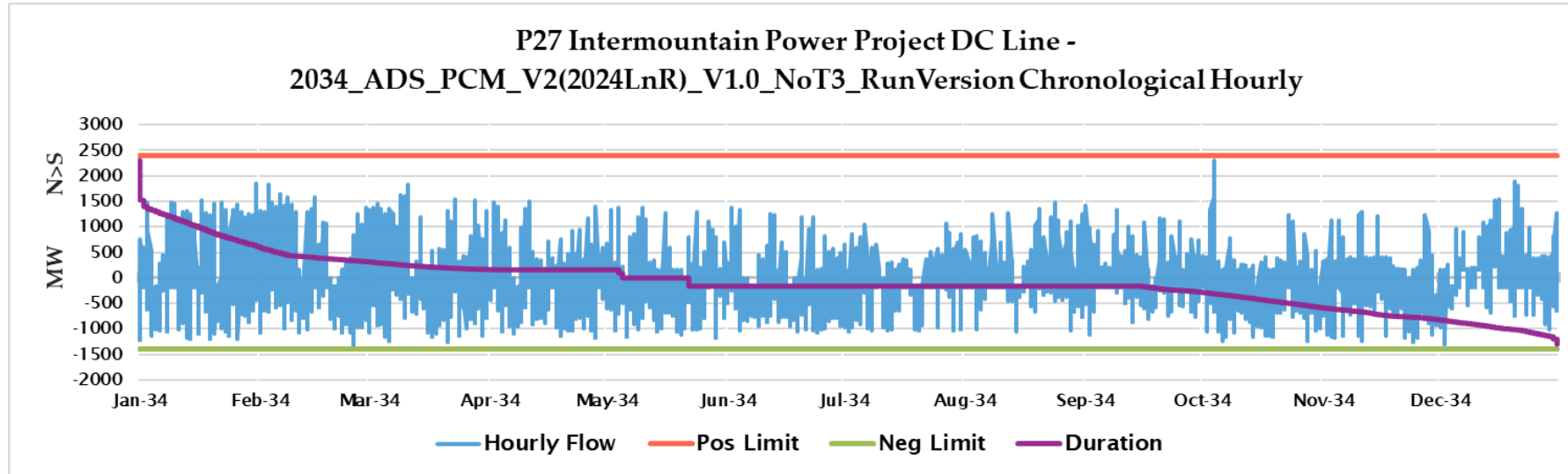
Regional Transfers



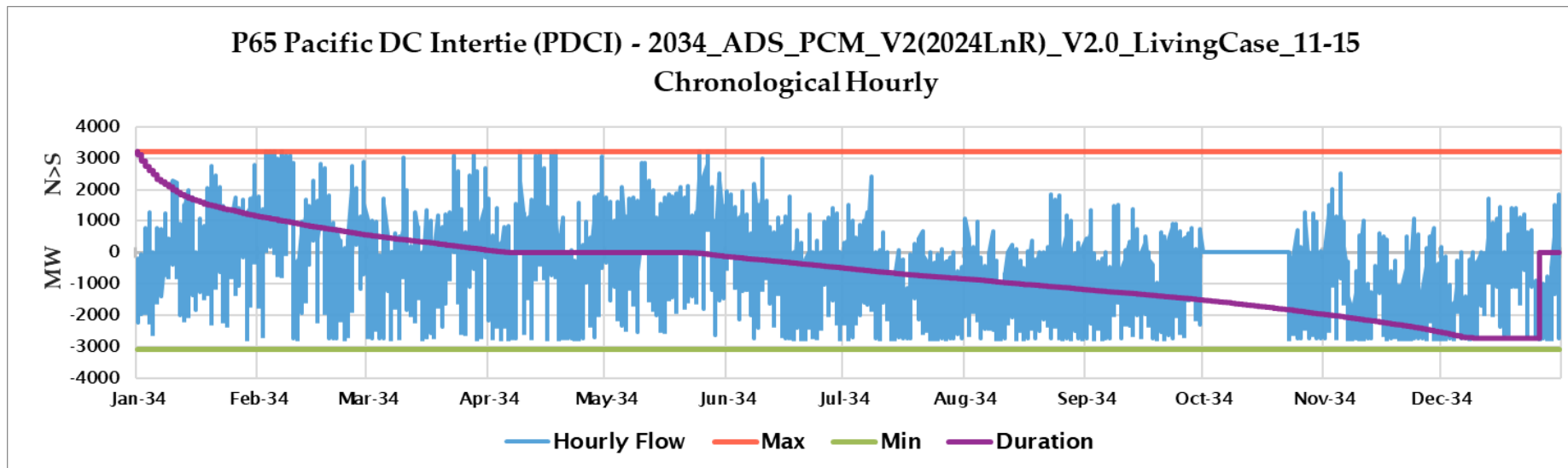
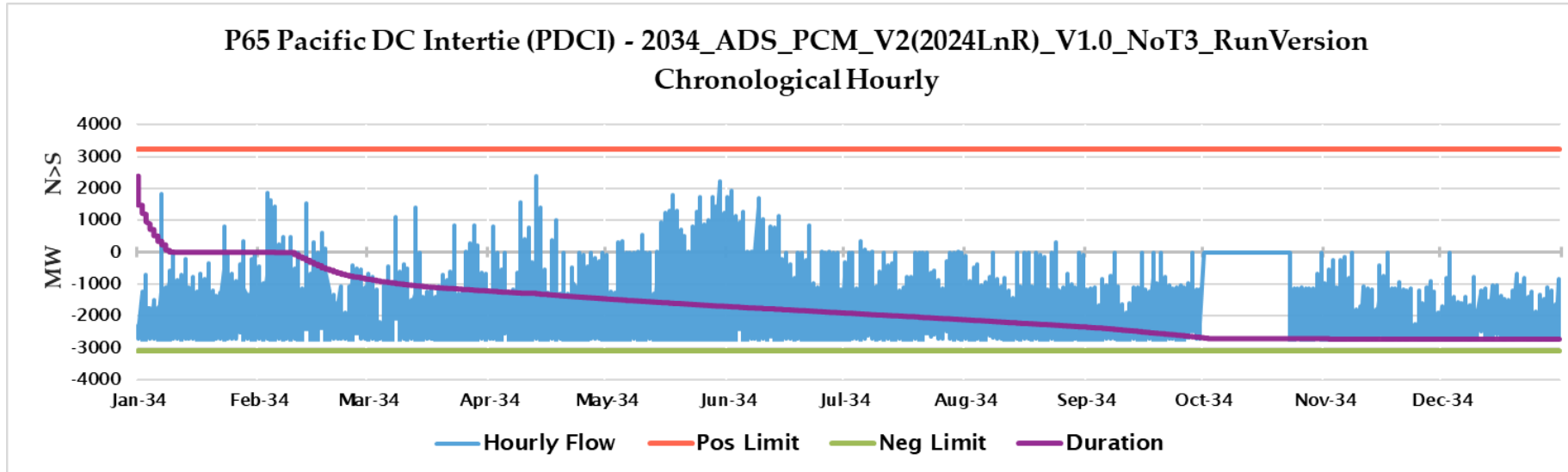
Transmission Utilization



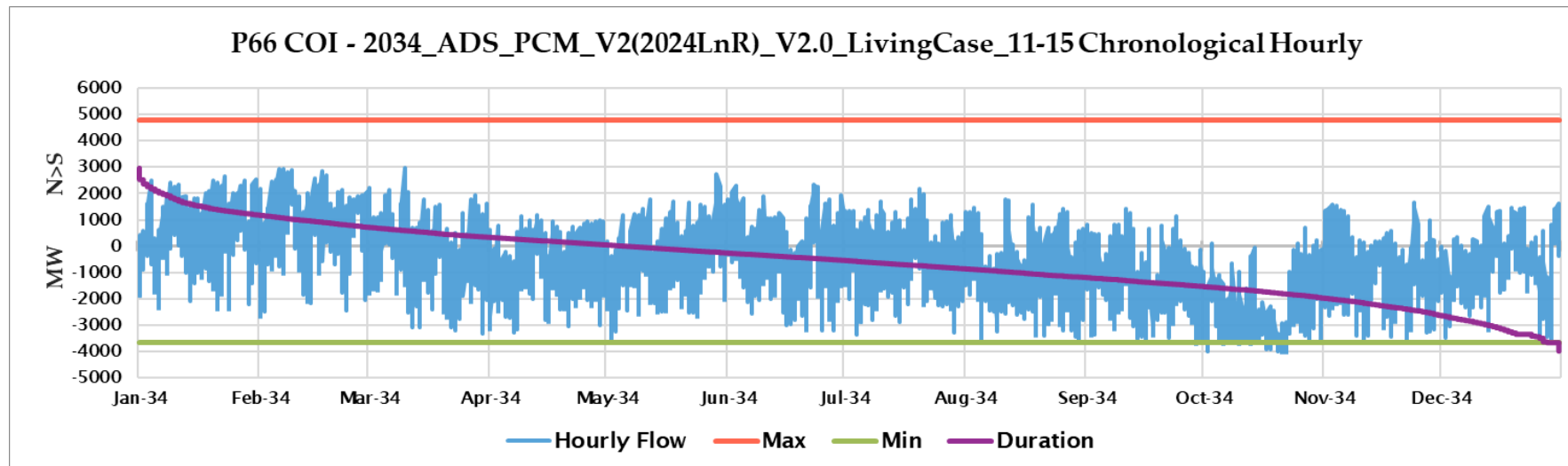
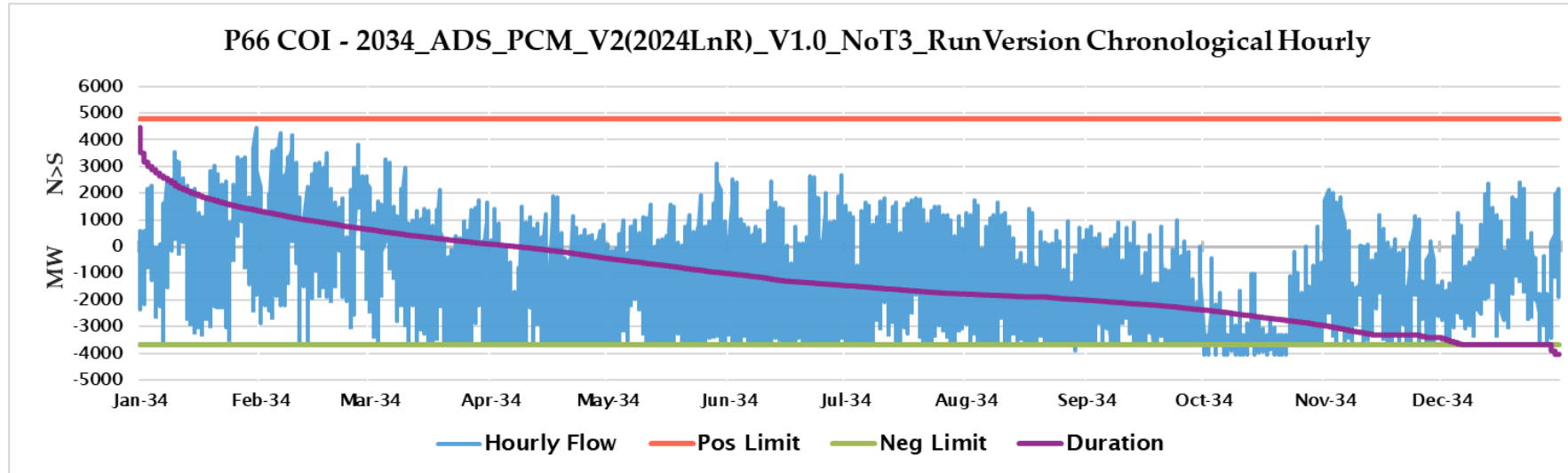
Hourly Transmission



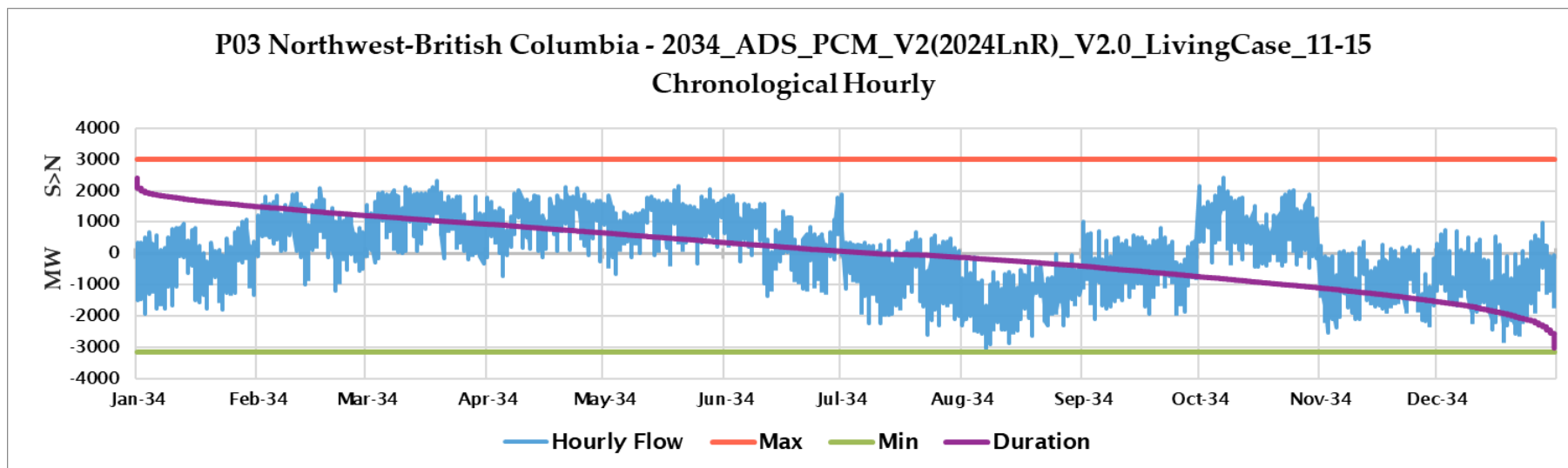
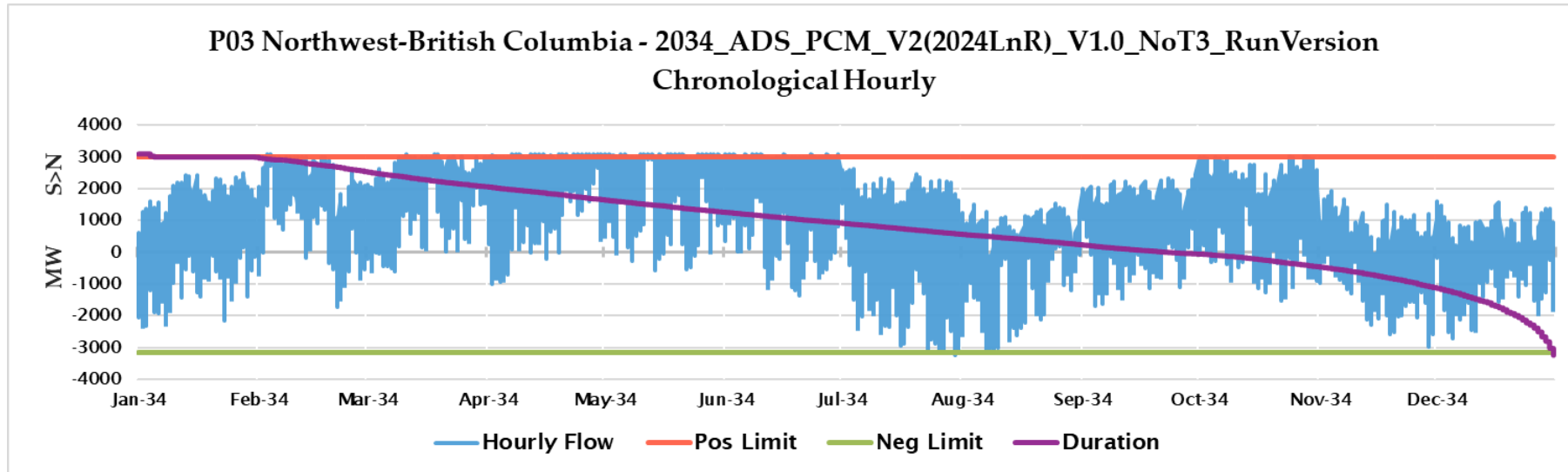
Hourly Transmission



Hourly Transmission

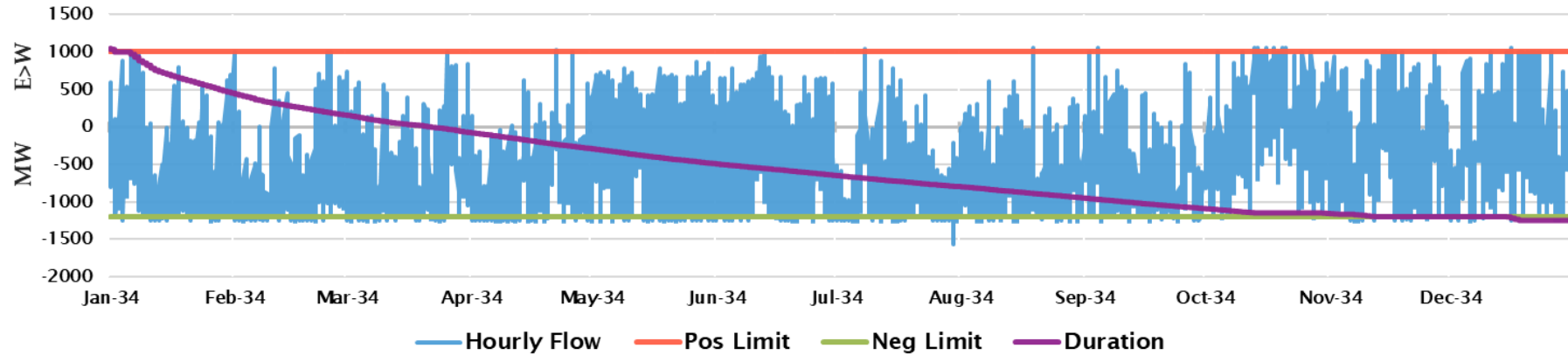


Hourly Transmission

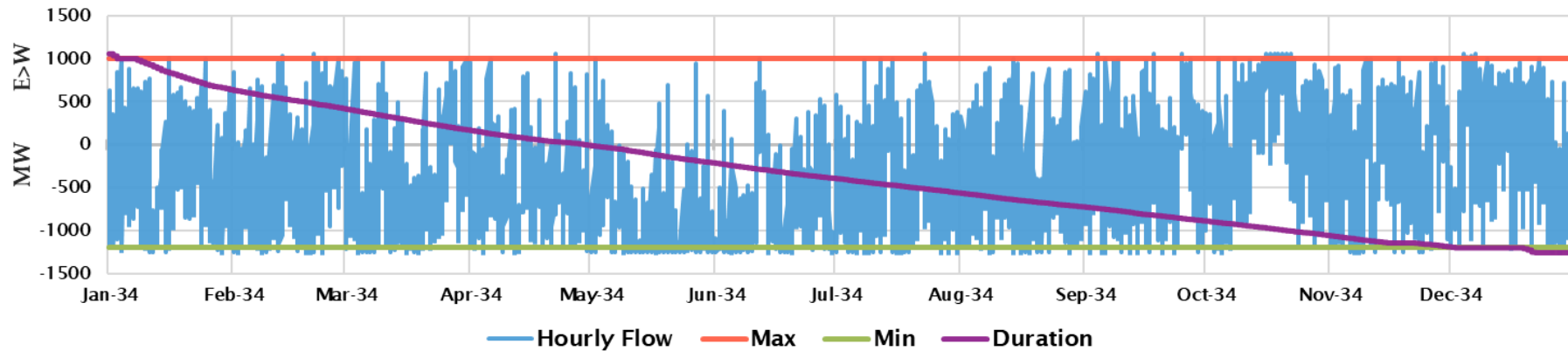


Hourly Transmission

P01 Alberta-British Columbia - 2034_ADS_PCM_V2(2024LnR)_V1.0_NoT3_RunVersion
Chronological Hourly

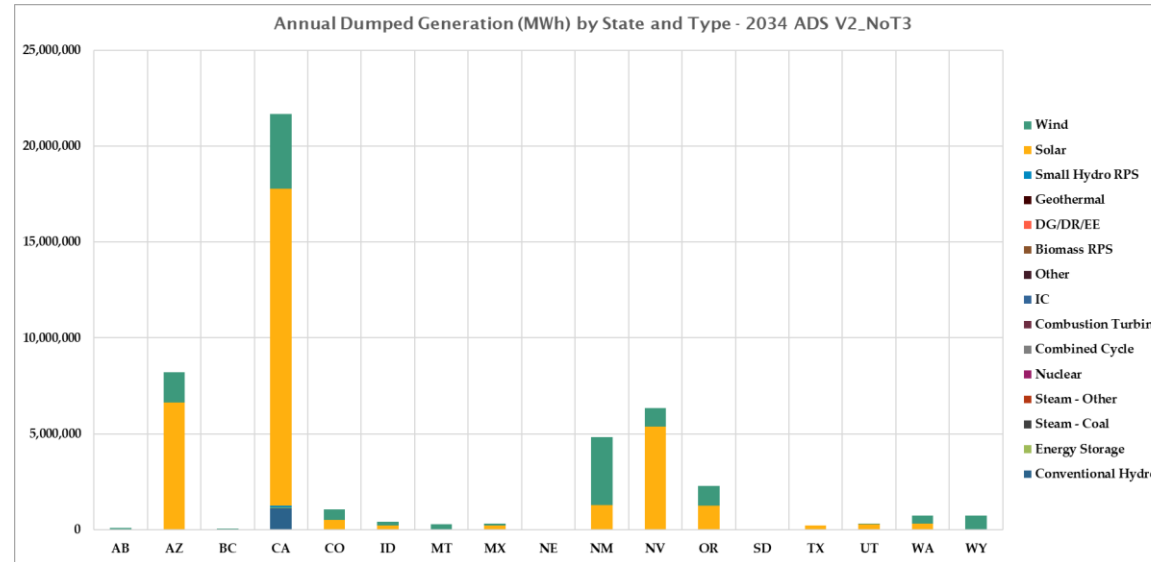


P01 Alberta-British Columbia - 2034_ADS_PCM_V2(2024LnR)_V2.0_LivingCase_11-15
Chronological Hourly

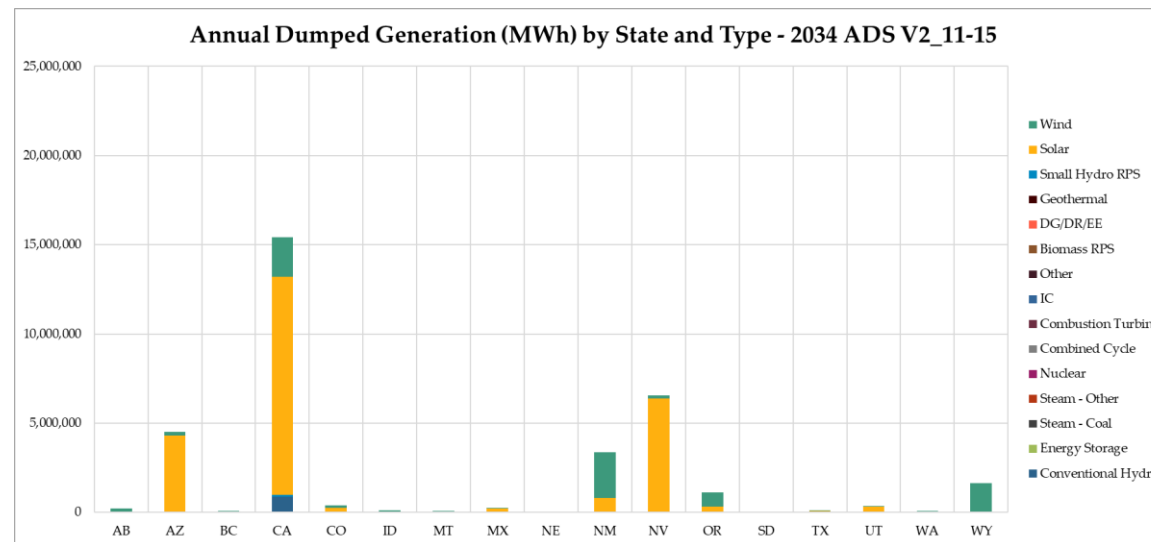


Dumped Energy

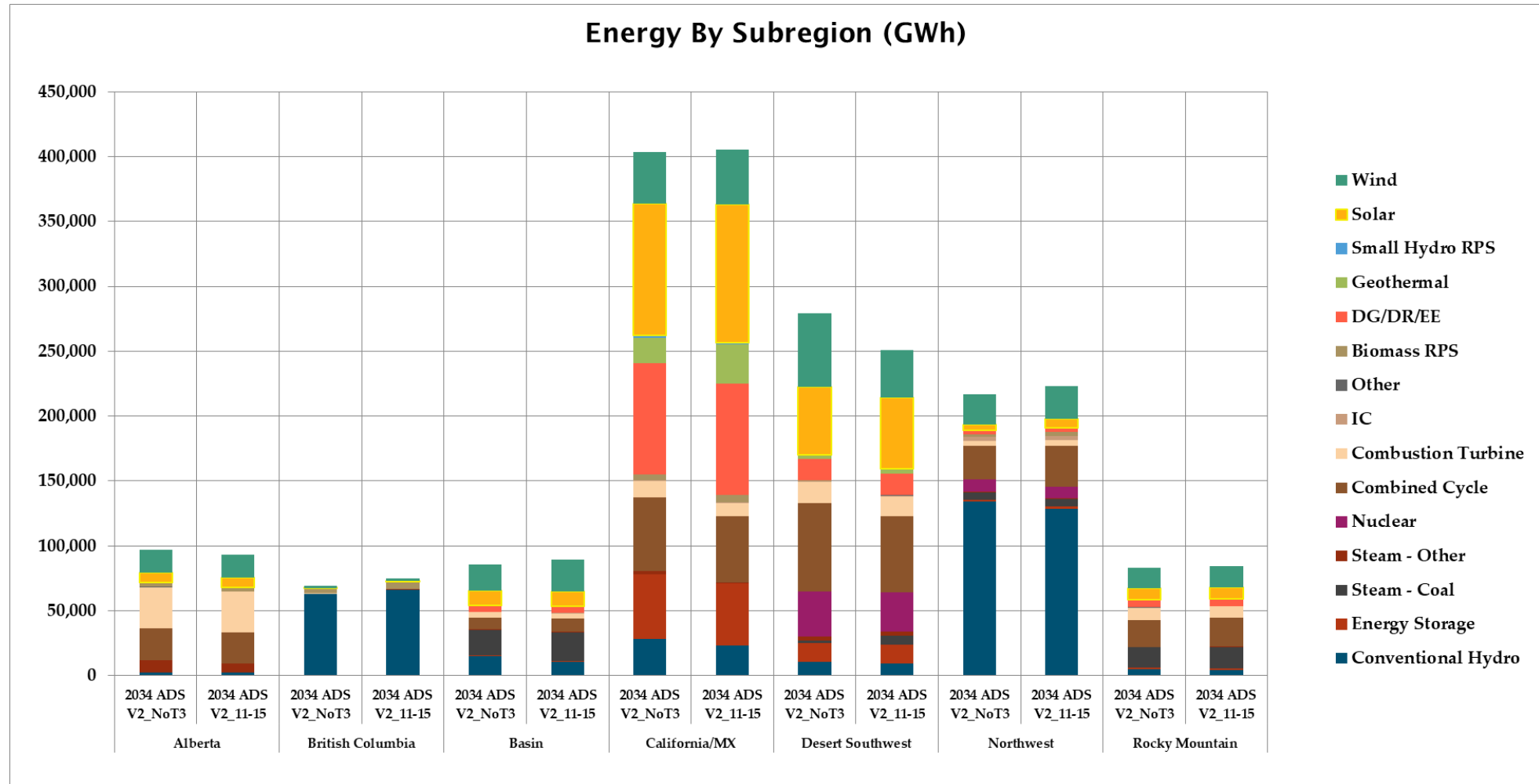
47,597,227 MWh



34,229,411 MWh



Energy by Subregion

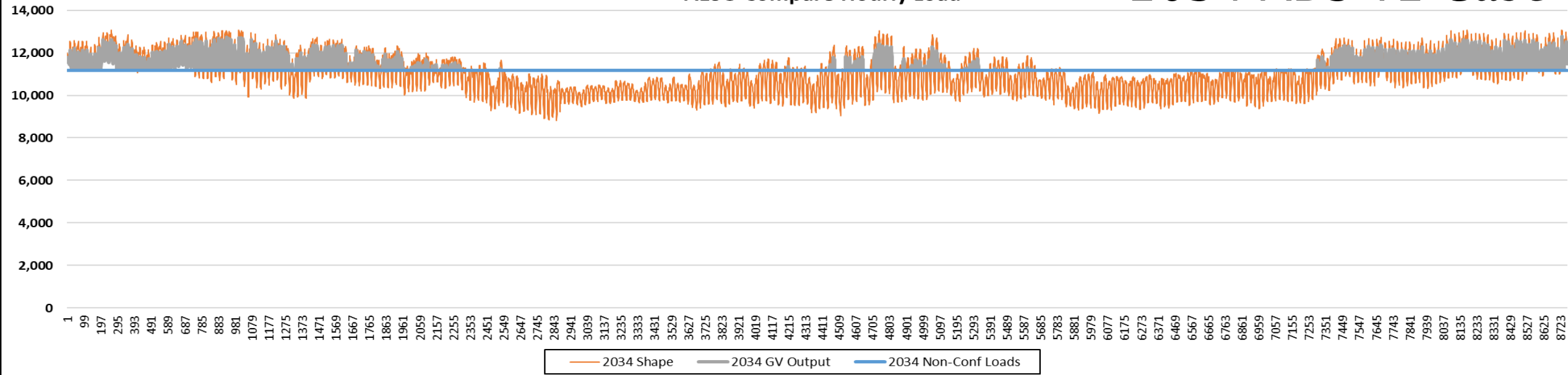


Non-conforming Load

2034 NCL Status V2 Case

AESO Compare Hourly Load

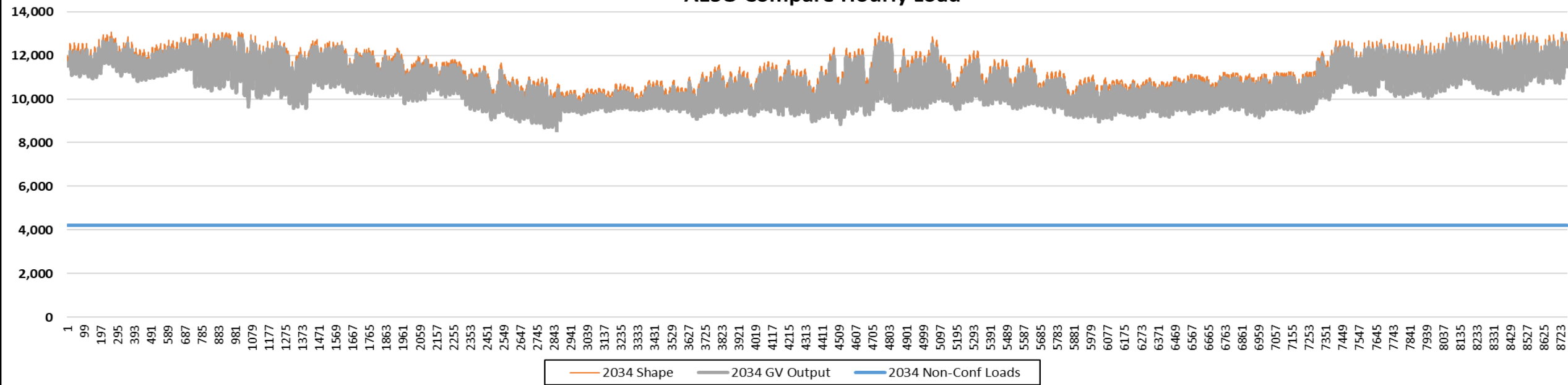
2034 ADS V2 Case



2032 NCL Status

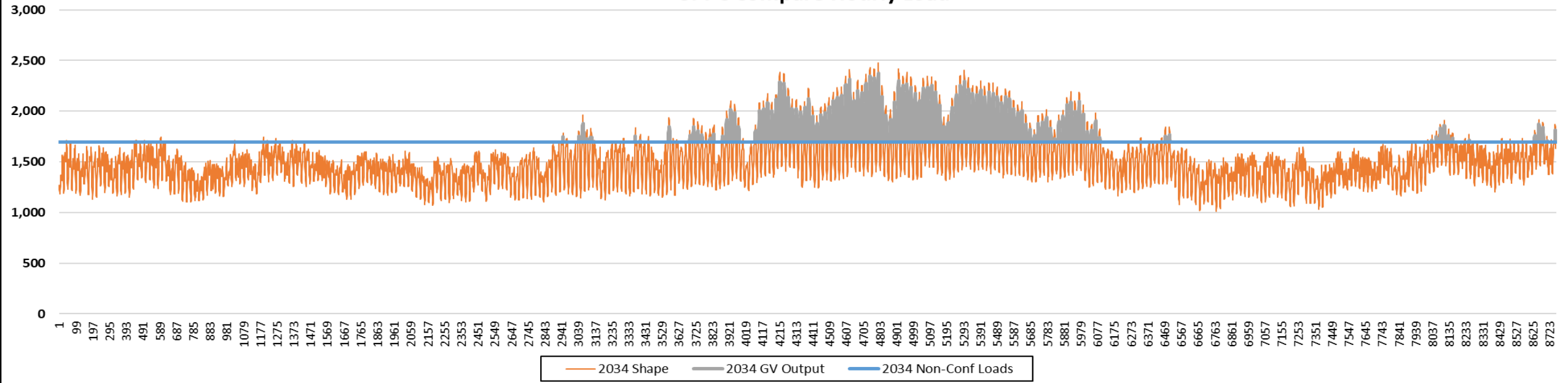
AESO Compare Hourly Load

11-14b Case



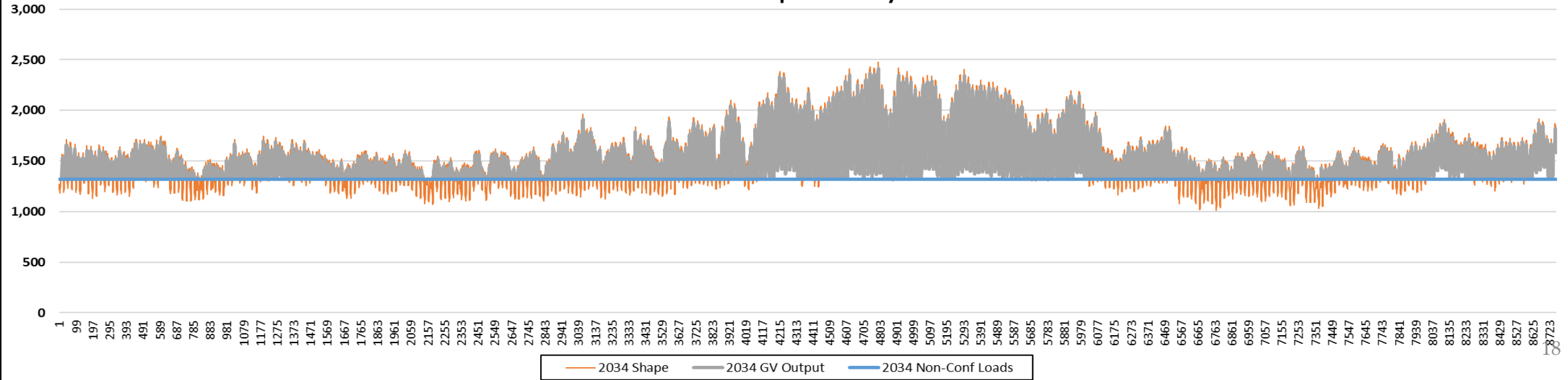
2034 NCL Status

SPPC Compare Hourly Load



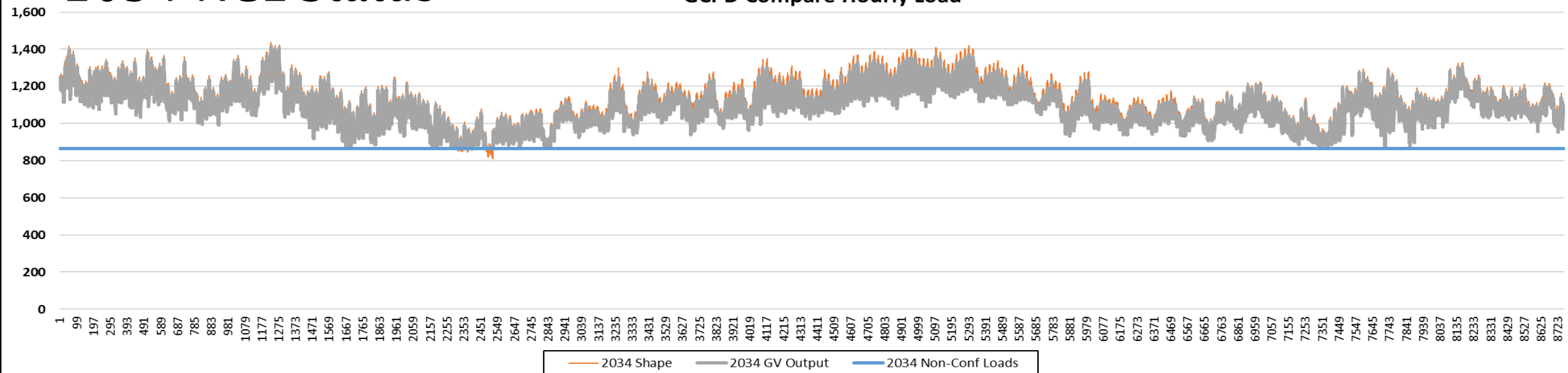
2032 NCL Status

SPPC Compare Hourly Load



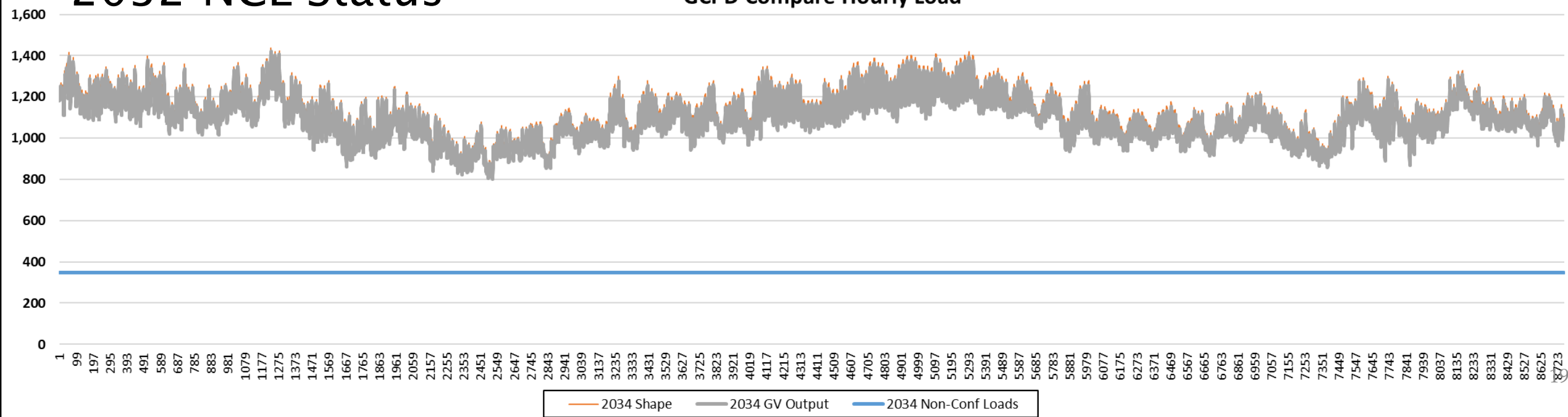
2034 NCL Status

GCPD Compare Hourly Load



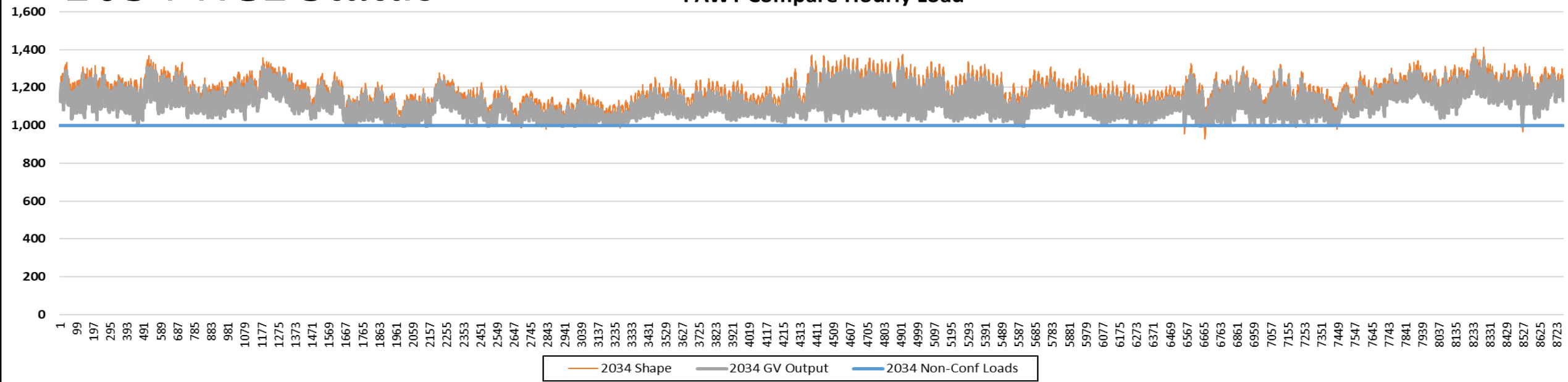
2032 NCL Status

GCPD Compare Hourly Load



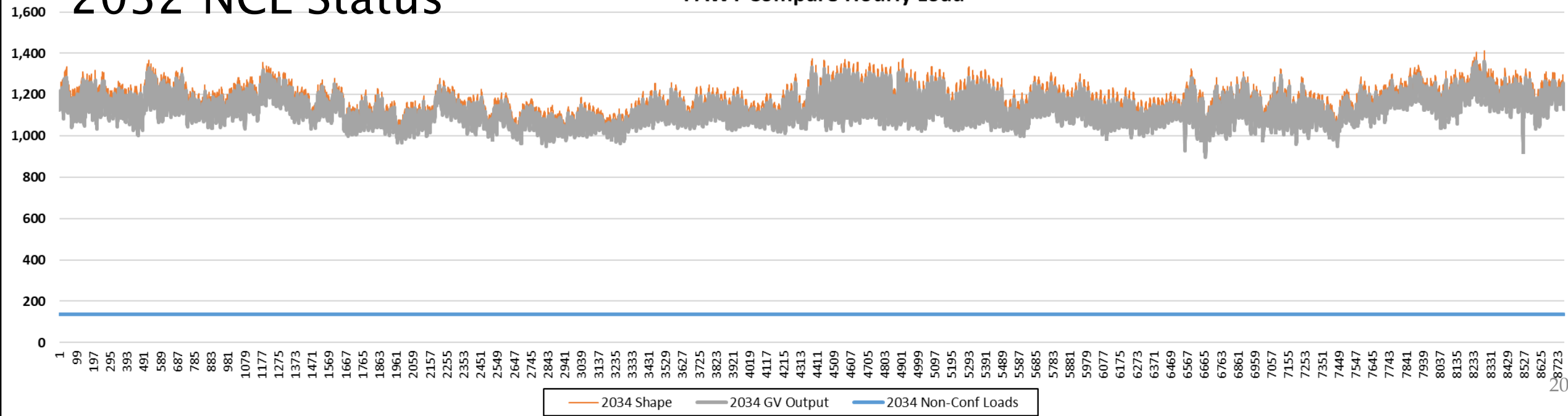
2034 NCL Status

PAWY Compare Hourly Load



2032 NCL Status

PAWY Compare Hourly Load





www.wecc.org