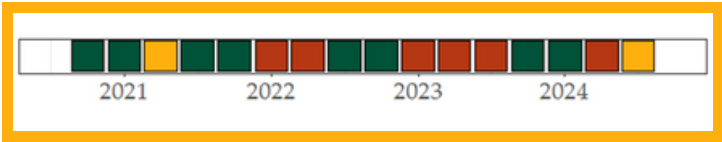


Indicator 5: System Operation Outside Balancing Authority ACE Limit (BAAL)

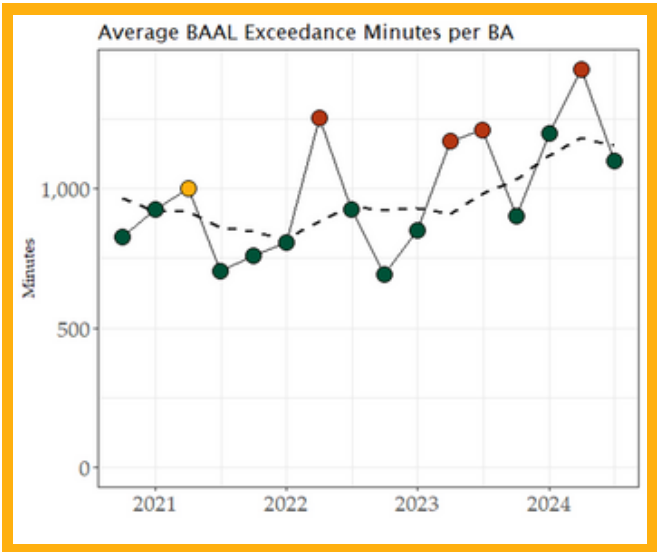
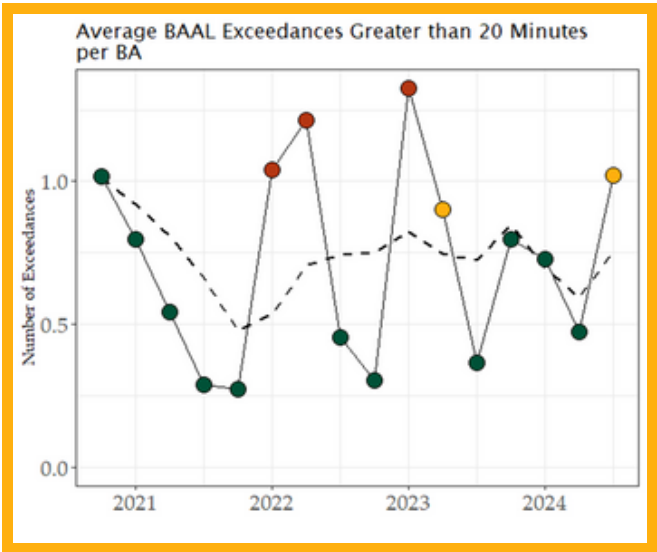


What it measures

Indicator 5 measures the system’s ability to maintain frequency within defined limits.



Combined Indicator Performance History



How it is measured

Indicator 5 is based on two metrics related to [Real Power Balancing Control Performance](#):

1. The mean number of Balancing Authority Area Control Error (ACE) Limit (BAAL) exceedance minutes per BA each quarter.
2. The mean number of BAAL exceedances greater than 20 minutes per BA each quarter.

Why this matters

Operation within the BAAL supports reliability by maintaining system frequency within defined limits. Instances where the BAAL is exceeded may put the reliability of the interconnection at risk.

What does the Q3 2024 evaluation tell us?

Only 11 BAs had any exceedances lasting more than 20 minutes, but two moderately sized BAs had 42 and 14 such events, respectively. Consequently, the average across all BAs was significantly greater than the rolling average of that metric. The average duration per BA was slightly below the rolling mean, but the combined result of these two metrics is that the indicator is “yellow.”

DATA SOURCE

NERC BA Submission Site (BASS)

