

Human Performance During Commissioning

Issue Summary

The commissioning process is crucial to ensuring new equipment is installed correctly and will function as intended. Crossover and shared responsibilities between contractors and entity personnel increase the complexity of this process and introduce opportunities for error. Processes that account for potential complications can reduce the number of errors and resulting misoperations.

Time Estimates & Action Plan



12
MO

WECC shares data with each entity concerning misoperations associated with human performance issues during commissioning (e.g., as-left personnel errors, AC/DC systems).



18
MO

WECC, the RWG, and the HPWG develop a guide to address human performance in commission testing based on field experience and documents such as the IEEE commissioning document.



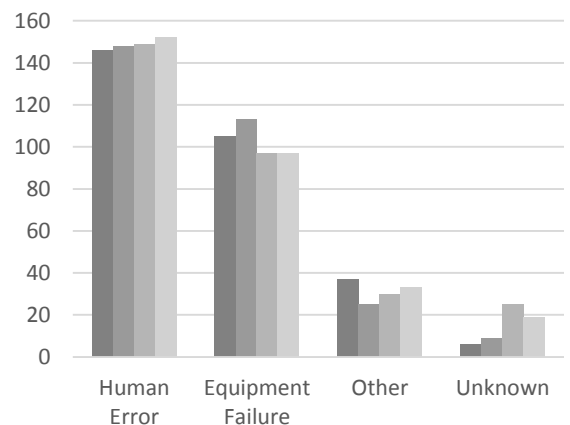
03
MO

Entities bring commission testing issues and questions to the RWG for discussion.

Analysis

Human error is the largest misoperation cause category, accounting for half of the misoperations reported in the Western Interconnection. This category includes misoperations due to errors in relay scheme logic and design, application of designed settings to equipment, and as-left personnel errors.

2013-2016
Misoperations by Cause Category



Questions to consider:

1. Is this an appropriate issue for the Misoperations Reduction Strategy?
2. How would you rank the priority of this issue (high, medium or low), and why?
3. Do you feel each action could be accomplished in the proposed time frame?
4. Does the Action Plan adequately address the issue?
5. What is the likelihood that your company would adopt the Action Plan (likely, possibly, unlikely), and why?