



Annual Base Case Compilation and Data Check Report

November 18, 2020

Elena Melloni

Purpose

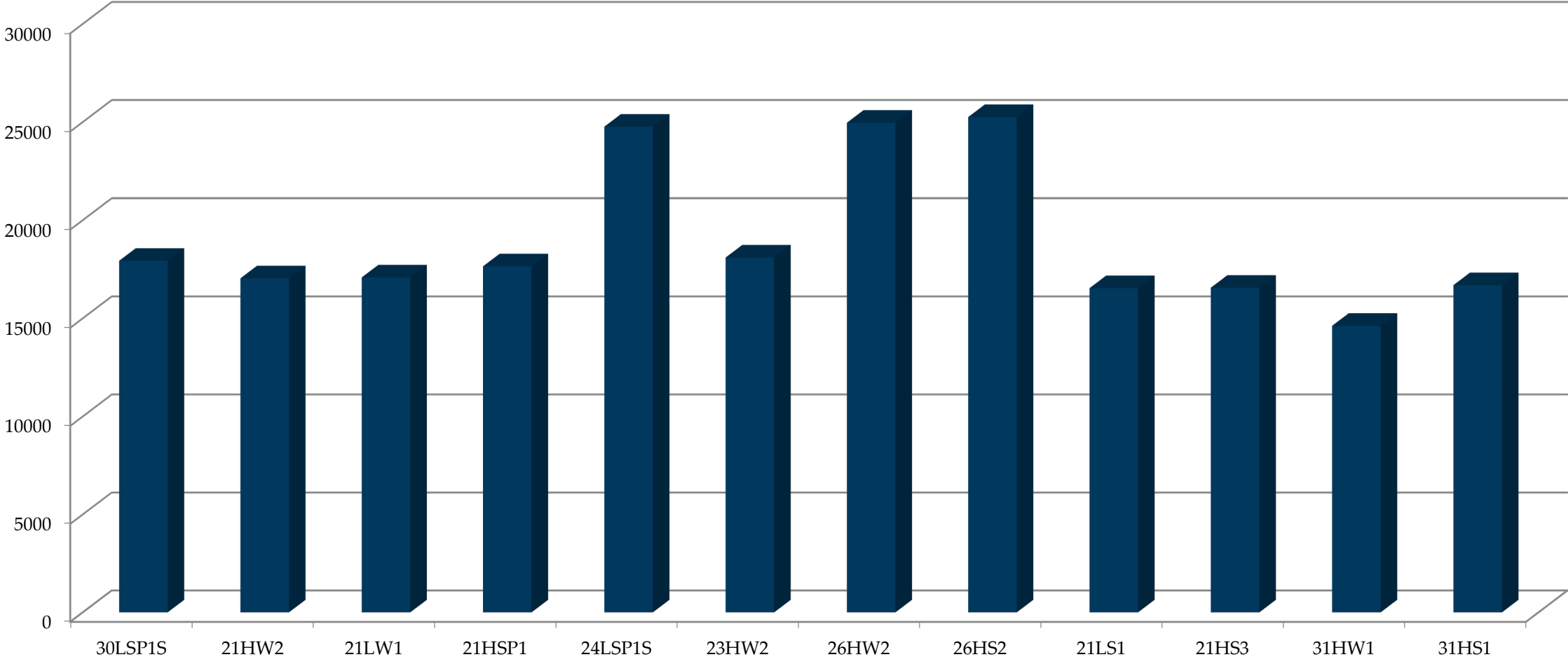
- Annual Assessment of WECC system model
- Base Case performance through data checks and disturbance simulations
- Lessons Learned

Base Cases

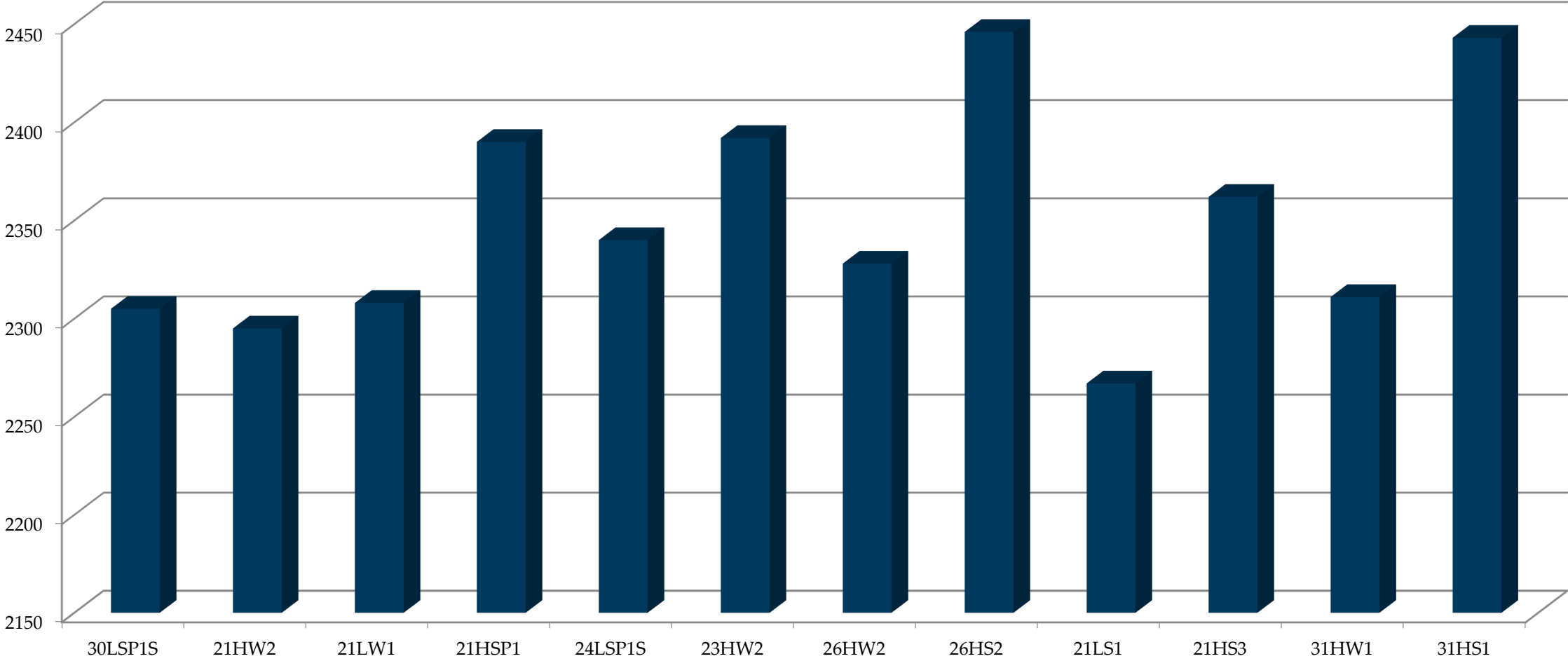
- 21HW2a—2020-21 Heavy Winter Operating
- 21LW1a—2020-21 Light Winter Operating
- 21HSP1a—2021 Heavy Spring Operating
- 21LS1a—2021 Light Summer Operating
- 21HS3a—2021 Heavy Summer Operating
- 23HW2a—2022-2023 Heavy Winter Specialized
- 24LSP1Sa—2024 Light Spring Specialized
- 26HW2a—2025-26 Heavy Winter Typical 5-Year Case
- 26HS2a—2026 Heavy Summer Typical 5-Year Case
- 30LSP1Sa – 2030 Light Spring Specialized
- 31HW1a—2030-31 Heavy Winter Typical 10-Year Case
- 31HS1a—2031 Heavy Summer 10-Year Planning Case

SADD REVIEW

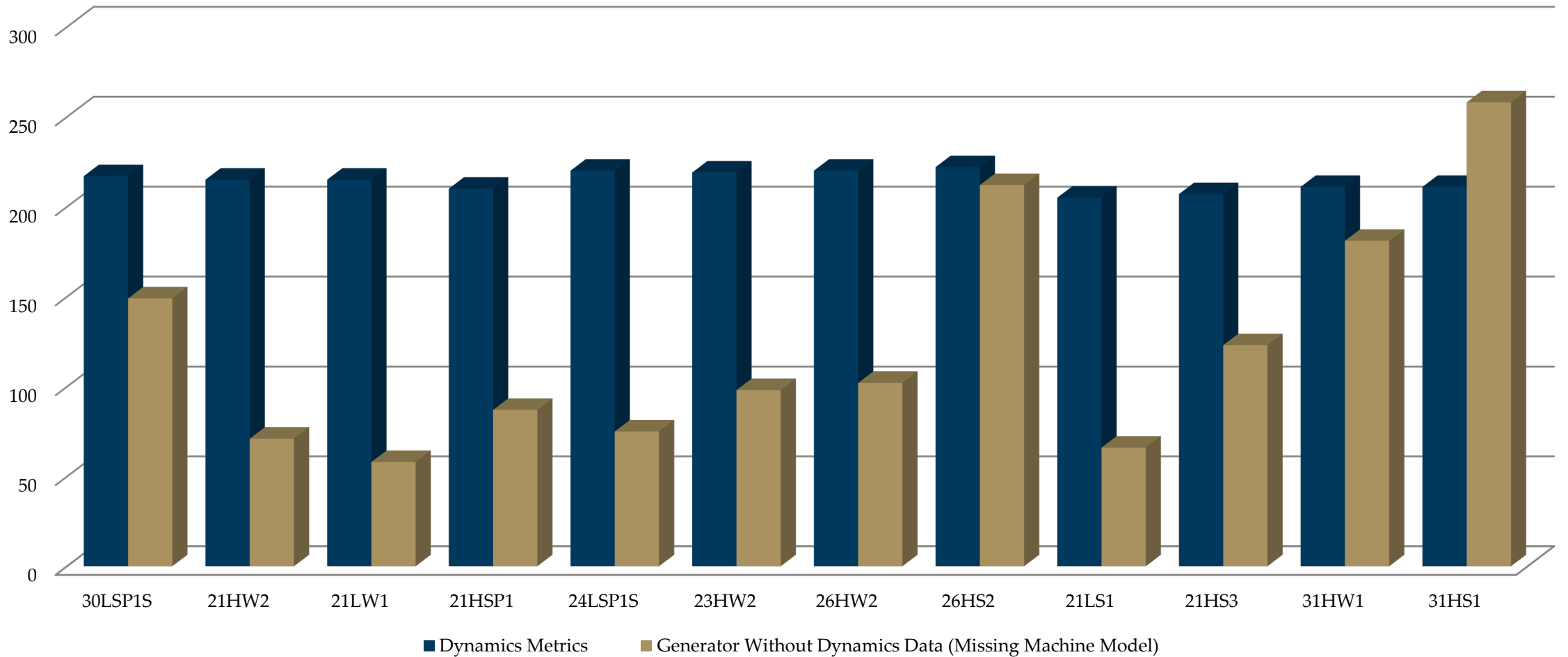
SADD Totals



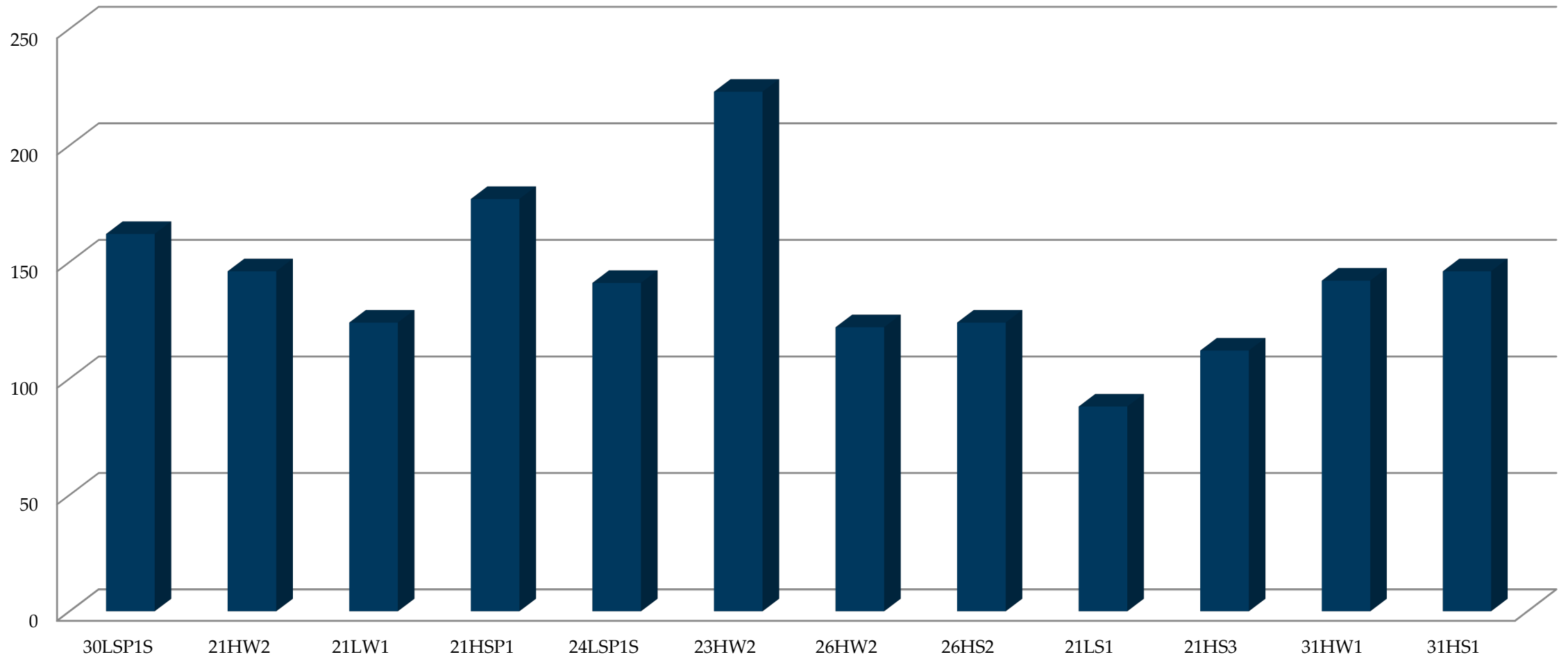
NERC Case Quality Metrics



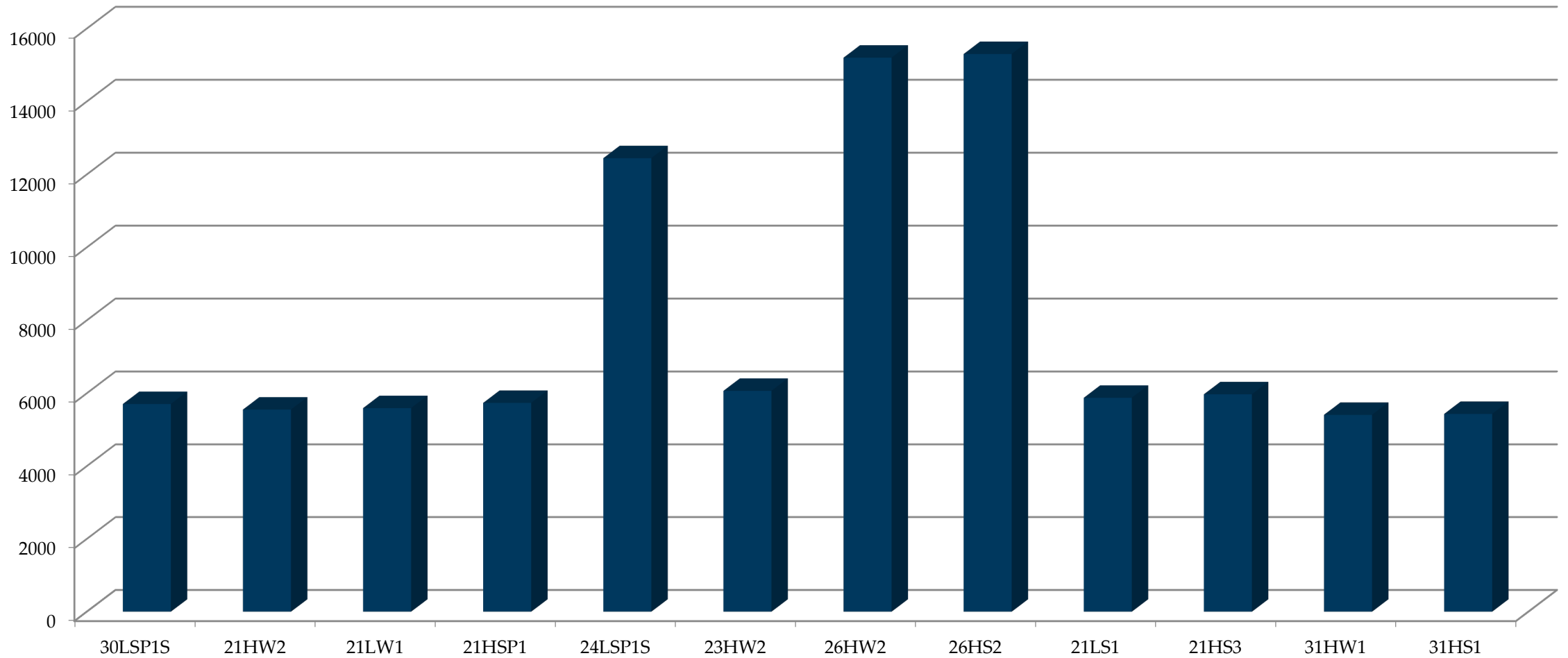
Generator Models



Missing Load Long ID



Missing BAA



Data Check Log REVIEW

Disturbance Summary

- Base Case Development
- Model Performance Assessment
 - No Disturbance Simulation
 - Six Standard Disturbances
- Average 14 model issues per base case.
 - Details in Appendix B



Contact:

Elena Melloni

Staff Engineer

emelloni@wecc.org